

City of Columbia Fire Department
Conceptual Fire Marshal & Interim FS#10 Plans

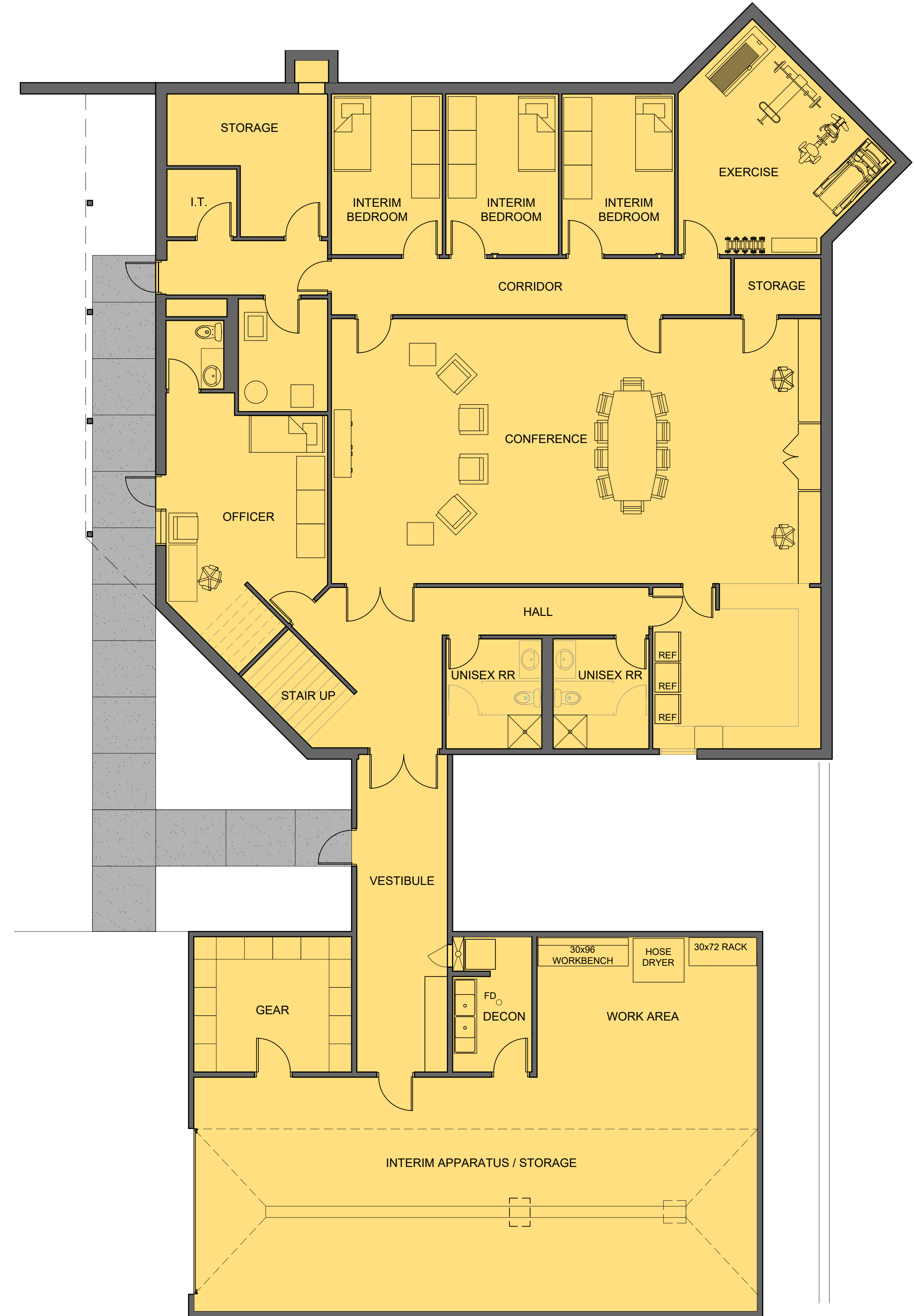
The City intends to renovate and modernize this 7,000 +/- square foot building to serve as new offices for the Fire Marshals Division on the main level and as an interim fire station on the lower level. Additionally, a 1,700 +/- square foot addition will be constructed to accommodate interim firefighting apparatus vehicles.

These renovations and additions aim to establish economical, reliable, sustainable, and innovative organizational and infrastructure foundations to efficiently deliver municipal services, meeting the current and future needs of our residents and visitors. The key features of the project include:

- Renovations and additions designed to withstand anticipated future conditions.
- Extensive use of regionally sourced materials with the highest recycled content feasible.
- Reduction of landfill waste by diverting construction and demolition waste.
- Development or replacement of entryways to ensure accessible access to the building.
- Replacement of vinyl siding and roof surfaces.
- Utilization of concrete slab on-grade construction with shallow foundations.
- Implementation of concrete paving.
- Incorporation of wood framing with structural steel support and wood roof trusses.
- Integration of energy-efficient HVAC and lighting systems, exceeding minimum code requirements.
- Use of air conditioning units with refrigerants having low global warming potentials, such as carbon dioxide or ammonia, instead of hydrofluorocarbons.
- Implementation of systems to manage energy demand and reduce peak energy usage.
- Installation of water conservation fixtures, including low-flow urinals, toilets, showers, and faucets.
- These enhancements will not only modernize the facility but also ensure its sustainability and functionality for years to come.



A1 FIRE MARSHAL'S OFFICE - UPPER LEVEL FLOOR PLAN
 NOT TO SCALE



A2 INTERIM FIRE STATION - LOWER LEVEL FLOOR PLAN
 NOT TO SCALE

No.	Date	By	Revision

COLUMBIA FIRE DEPARTMENT
 1020 S. EL CHAPARRAL AVE.
 INTERIM FIRE STATION # 10 FLOOR PLANS

City of Columbia, Missouri
 Public Works

File No.	
Scale:	NO SCALE
Date:	03/04/2024
Des.	
Dwn.	
Chk.	