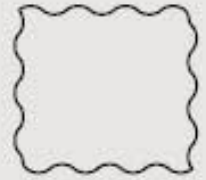


POST CARD



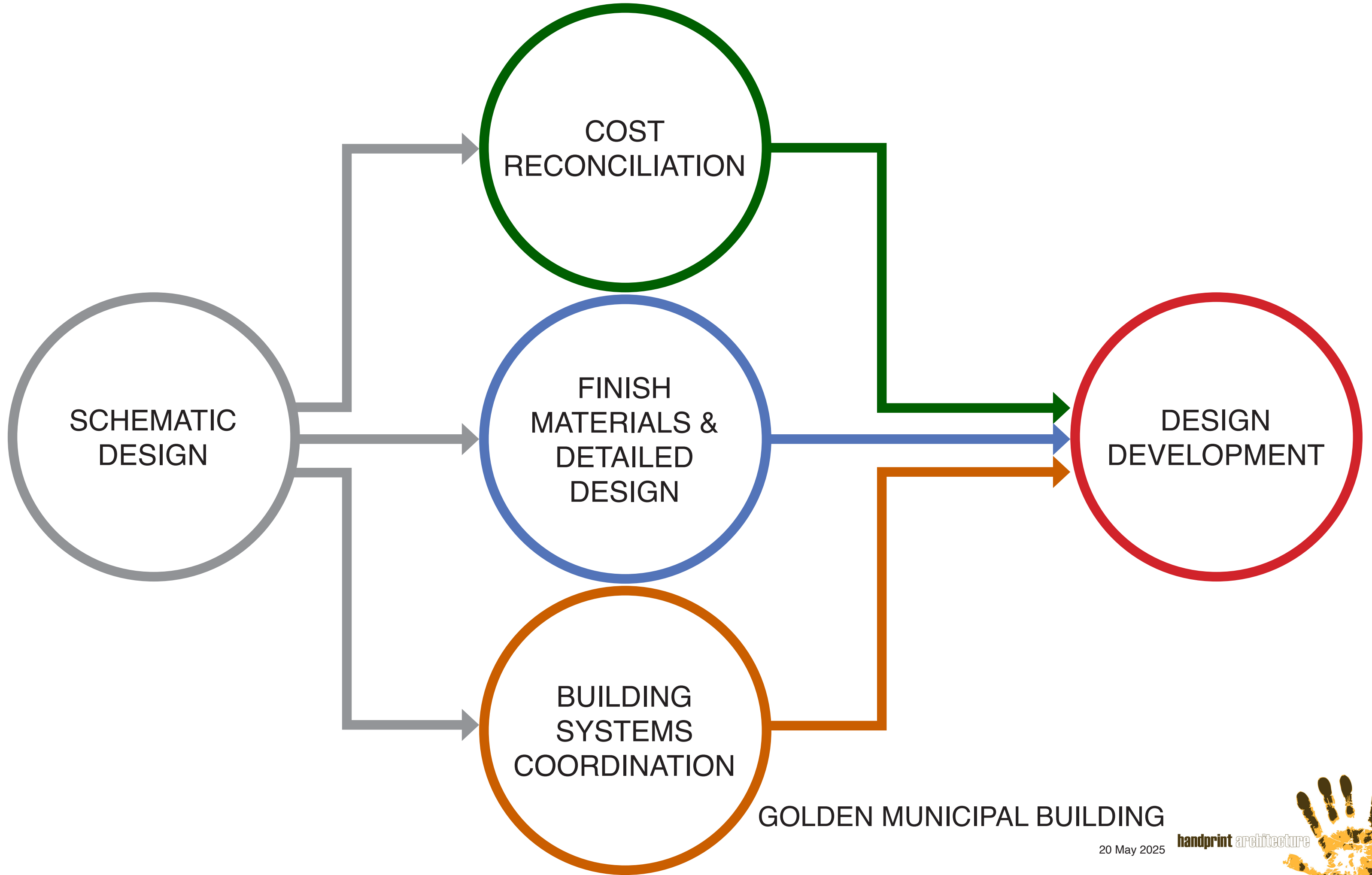
GOLDEN SITS WHERE UPLANDS, MIDLANDS, AND
LOWLANDS MEET—A PLACE WHERE HISTORY AND
INNOVATION FLOW TOGETHER.

GOLDEN MUNICIPAL BUILDING

20 May 2025

handprint architecture





DESIGN PRINCIPLES



Design for the Community

Design a new facility that provides tangible benefits for the community's benefit, such as community meeting spaces, outdoor plazas, and space to do business with the City.

- Welcoming presence with active street and public spaces
- Community Room
- Event Plaza
- Lobby-adjacent meeting spaces
- Catalyze development in adjacent parcels



Design for Safety, Security, and Efficiency

Provide an efficient design solution that allows for the safety of City staff, community, visitors, and police while encouraging collaboration and efficient delivery of City services.

- Secure space where required
- Clear way finding
- Intuitive distinction between public and secure space
- Multi-purpose spaces
- Hybrid work space
- Modular, flexible environment
- Collaboration spaces



Design for the Environment

Provide a new facility that aligns with the AIA Committee on the Environment's Framework for Design Excellence: Design for Integration, Equitable Communities, Ecosystems, Water, Economy, Energy, Well-being, Resources, Change, and Discovery

- Net-Zero Energy building
- Water efficient design strategies
- Integration with Clear Creek ecosystem



Design for Innovation

Provide an innovative facility honoring Golden's unique culture and is responsive to forward-looking work trends, resilient over time, and positions the community for the future.

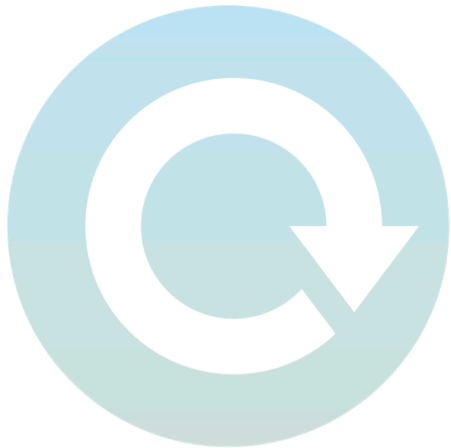
GOLDEN MUNICIPAL BUILDING

20 May 2025

handprint architecture



SUSTAINABLE DESIGN GOALS AND STRATEGIES



Net Zero Energy



All-Electric



LEED Platinum

Climate Responsive
Architecture



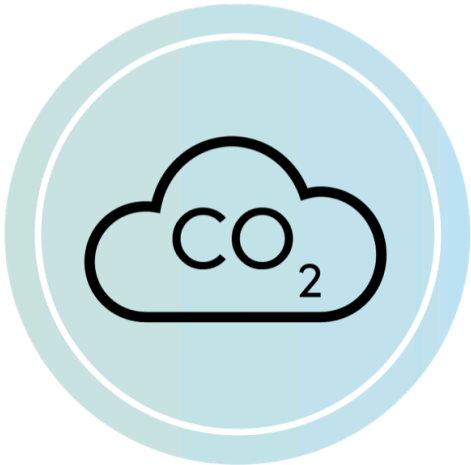
Orientation/massing
Solar control
Daylight
Enhanced envelope

Integrated Building
Systems



Geo-exchange HVAC
Envelope load reduction
Heat recovery DOAS
Underfloor Air Distribution
Low-energy lighting

Building
Decarbonization



Electrification
On-site renewable energy
Mass timber structure
Low embodied carbon

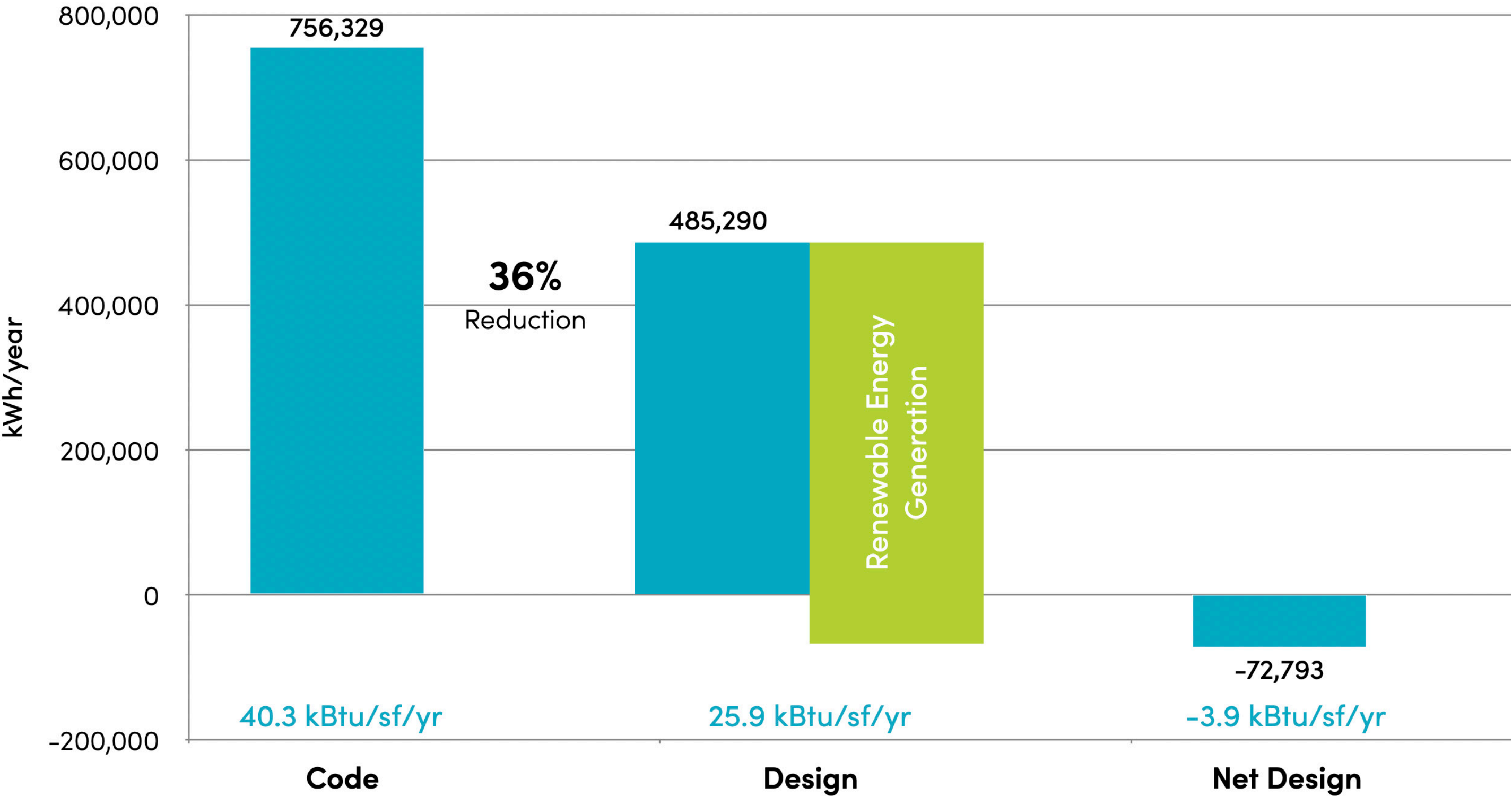
GOLDEN MUNICIPAL BUILDING

20 May 2025

handprint architecture



ENERGY SAVINGS



GOLDEN MUNICIPAL BUILDING

20 May 2025

handprint architecture



LEED PLATINUM

Golden Municipal Facility
LEED v4 BD+C Checklist
May 15, 2025



Form & Flow
BUILDING PERFORMANCE DESIGN

	Y	+?	-?	N		Points		Assigned	Notes
	7	0	2	7		16	Location and Transportation		
	7	0	1	2		10	Sustainable Sites		
	6	1	0	4		11	Water Efficiency		
	33	0	0	0		33	Energy and Atmosphere		
	8	3	1	1		13	Materials and Resources		
	15	0	0	1		16	Indoor Environmental Quality		
	6	0	0	0		6	Innovation		
	2	0	0	2		4	Regional Priority		
	85	4	4	17		110	Total		

Certified: 40-49 Silver: 50-59. Gold 60-79: Platinum: 80-110

GOLDEN MUNICIPAL BUILDING

20 May 2025

handprint architecture

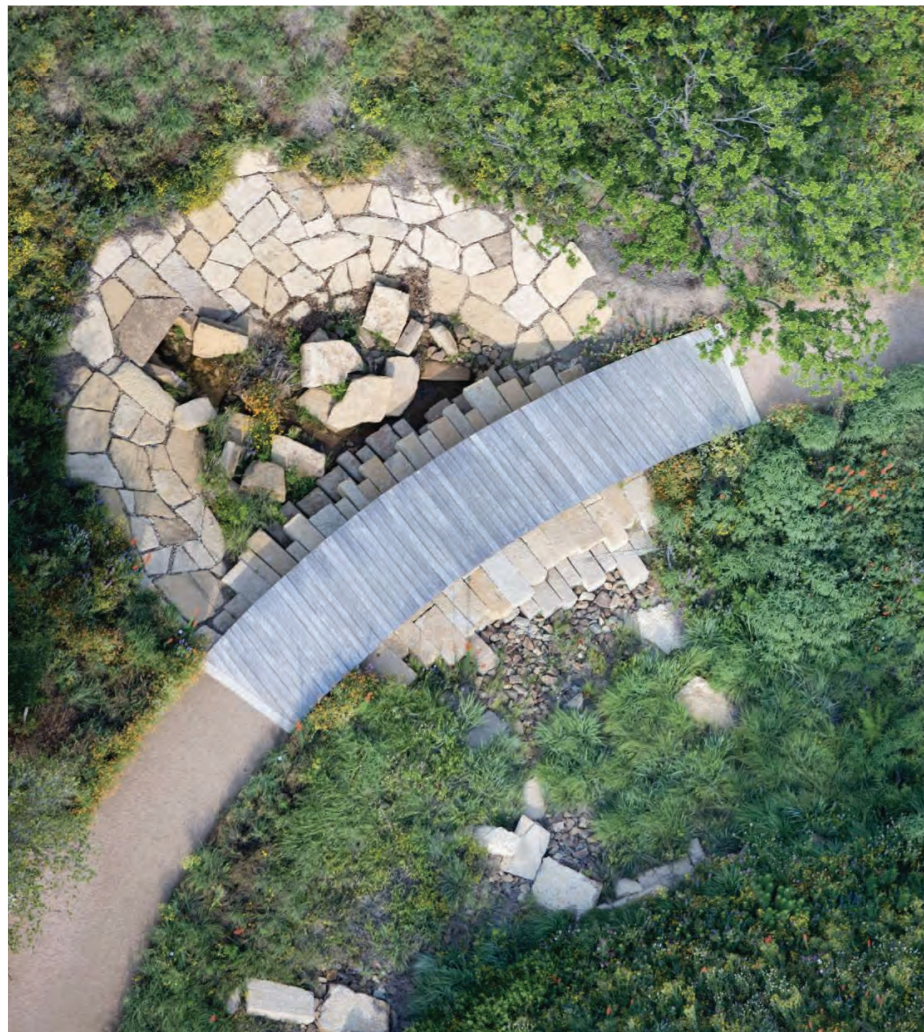




Connect people back to the landform, planting, and materials characteristic of Golden



Stone and Terracing Represent Golden's Terrain



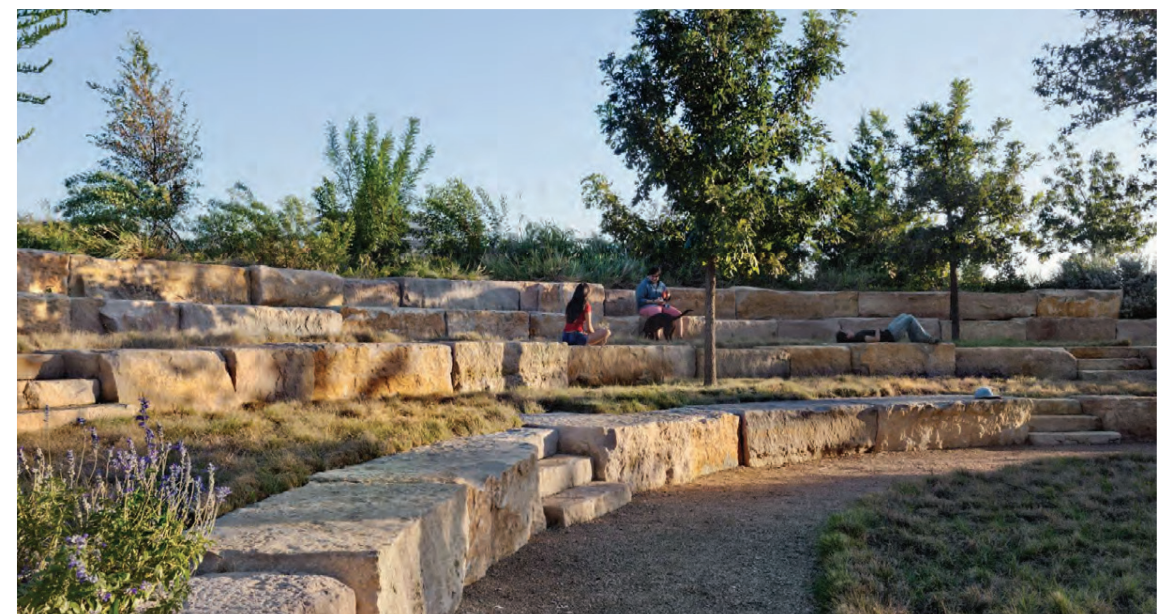
Texture and Natural Materials of Golden



Native Plants and Colors of Golden



Connection to Nature and Outdoor Activities



Places to Sit and Gather among Nature

GOLDEN MUNICIPAL BUILDING

20 May 2025

handprint architecture





'Upland Herbaceous'

- Native Dry Grasses and Forbs, with some shrubs to reflect Upland Prairies
- Limited use of Trees and Shrubs to provide shade, screening, and other functional benefits



'Crafted Prairie'

- Native Grasses, Shrubs, and Perennials integrated with plazas, walks, and gathering areas
- Native Trees to provide shade and mark entries and plazas



'Lowland Forested'

- Native Riparian Grasses and Forbs, with some Shrubs to form Lowland Meadows
- Native Riparian Tree Species to frame views and provide screening from the Coors Factory

GOLDEN MUNICIPAL BUILDING

20 May 2025

handprint architecture





GOLDEN MUNICIPAL BUILDING

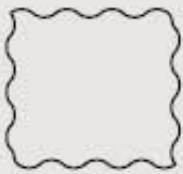
20 May 2025

handprint architecture





POST CARD



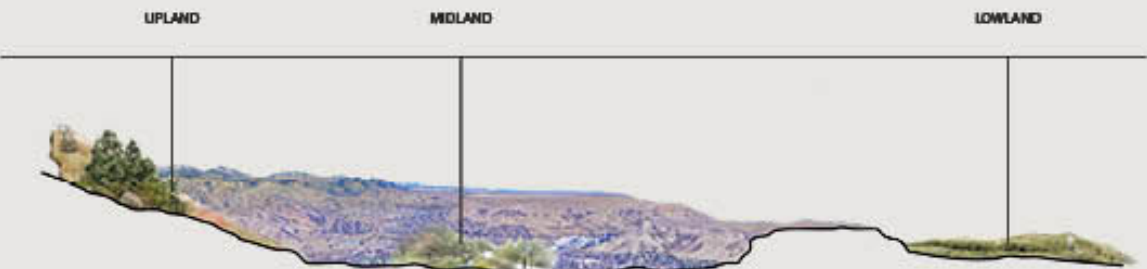
GOLDEN SITS WHERE UPLANDS, MIDLANDS, AND
LOWLANDS MEET—A PLACE WHERE HISTORY AND
INNOVATION FLOW TOGETHER.

THE BIG IDEA | BIOMIMICRY

COLORS of Topography

PRAIRIE LOWLANDS, URBAN MIDLANDS, UPLAND PEAKS

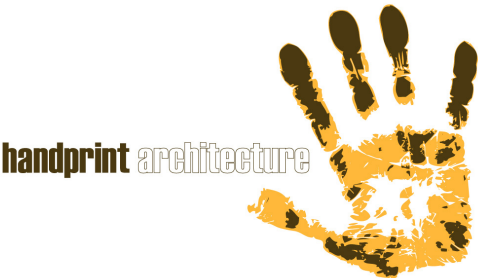
In Golden, Colorado, color is more than a surface—it's a story written in the land itself. From the rich earth tones of the foothills to the shifting hues of the sky, nature's palette inspires a pursuit of color that is both timeless and ever-evolving. Rooted in the rugged beauty of the Rockies, our design embraces natural gradients, geological textures, and the harmony of biomimicry. Just as layers of stone and rings of wood tell the passage of time, color shapes our identity, bridging past and future in a bold, unified vision.



IA | INTERIOR ARCHITECTS

GOLDEN MUNICIPAL BUILDING

20 May 2025

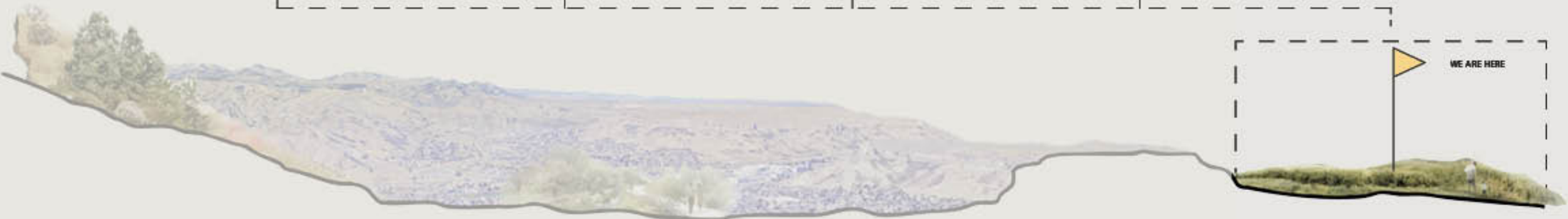
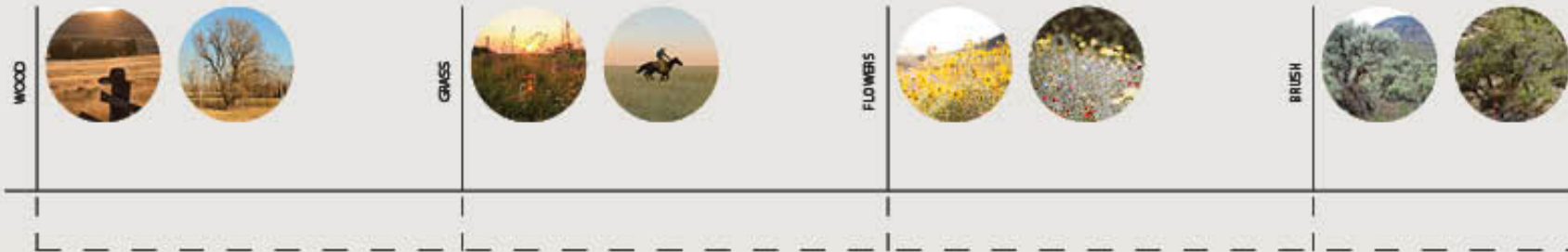
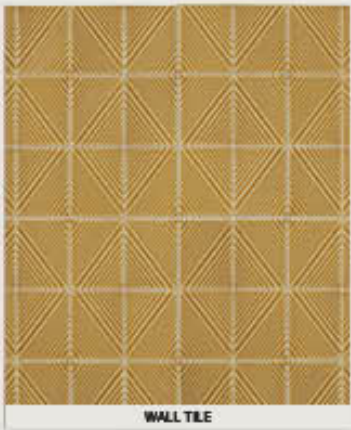
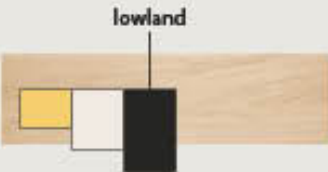


LAYER ONE | PRAIRIE LOWLANDS



prairie lowlands

Design here is shaped by the quiet poetry of the plains—vast horizons, soft grasses, and shifting light. Our palette reflects the earth's natural tones, grounded in openness and simplicity. The design honors the enduring, yet ephemeral landscape—rooted, expansive, and full of movement.



IA | INTERIOR ARCHITECTS

GOLDEN MUNICIPAL BUILDING

20 May 2025

handprint architecture

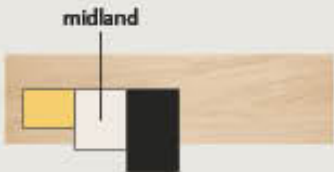


LAYER TWO | URBAN MIDLANDS



urban midlands

Here, brick and steel rise beside riverbanks and green corridors, where wild growth softens the city's edge. Our palette balances the warmth of aged materials with the calm resilience of native landscapes. It's a story of coexistence—grit and greenery, structure and stillness—shaping spaces that feel grounded, adaptive, and quietly alive.



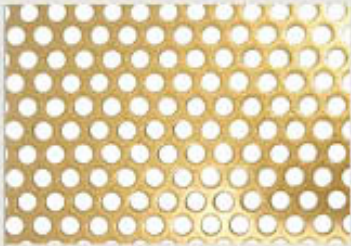
ARCHITECTURE



QUARTZ COUNTERTOP



FLOOR TILE



ACCENT METAL



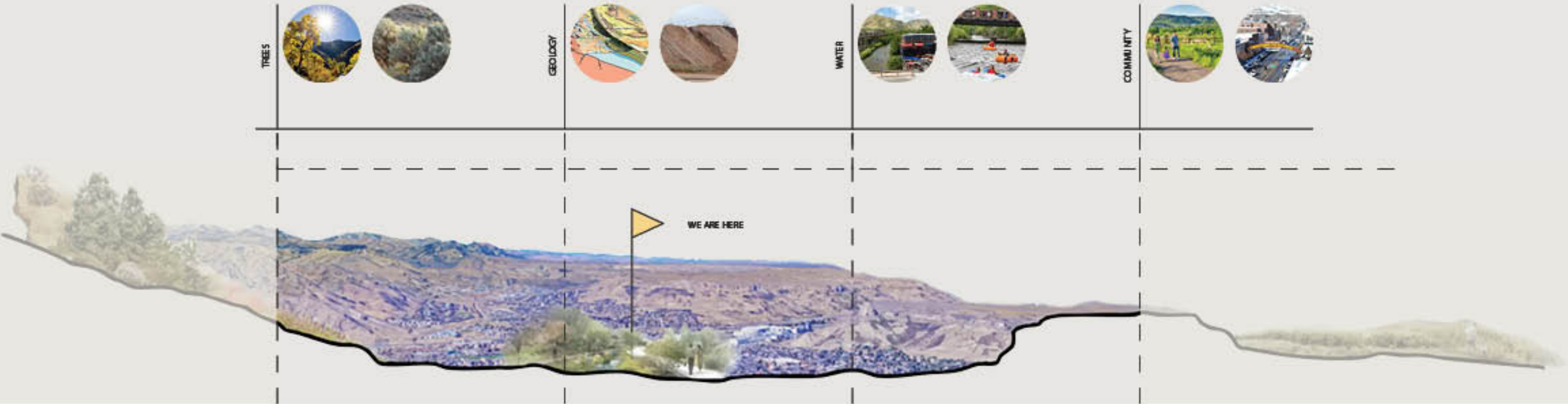
MILLWORK



CARPET TILE



ACOUSTIC / FEATURE WALL



IA | INTERIOR ARCHITECTS

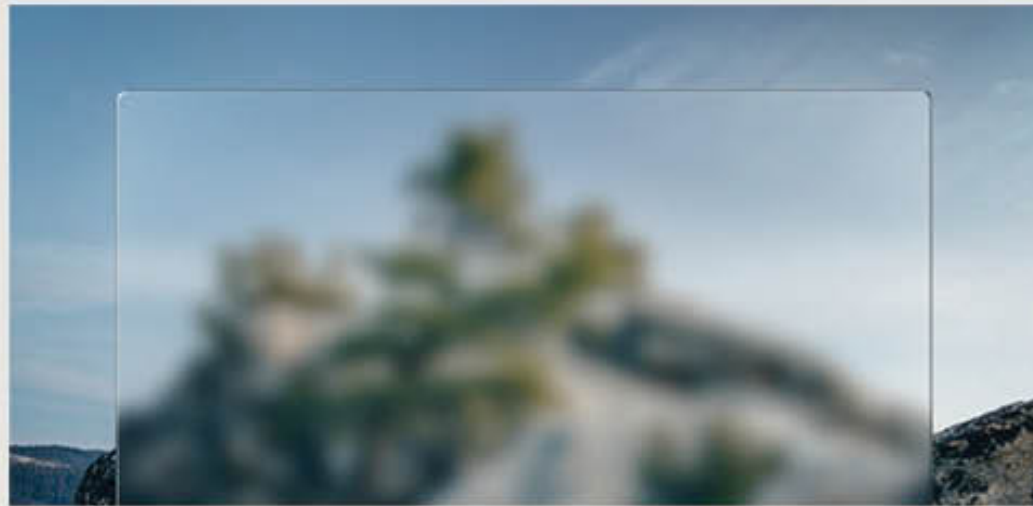
GOLDEN MUNICIPAL BUILDING

20 May 2025

handprint architecture

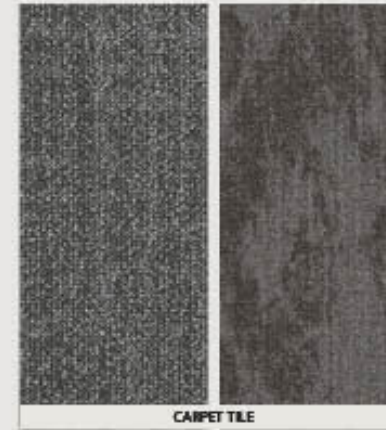
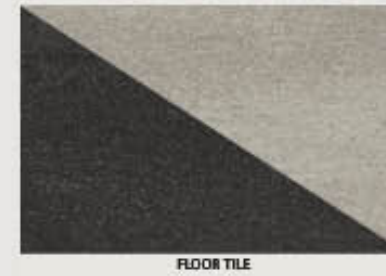


LAYER THREE | UPLAND PEAKS



upland peaks

Shaped by altitude and light, the palette draws from wind-worn stone, sun-bleached terrain, and open skies. It's a quiet elevation—where rugged forms and refined simplicity meet in spaces that feel grounded, yet expansive.



IA | INTERIOR ARCHITECTS

GOLDEN MUNICIPAL BUILDING

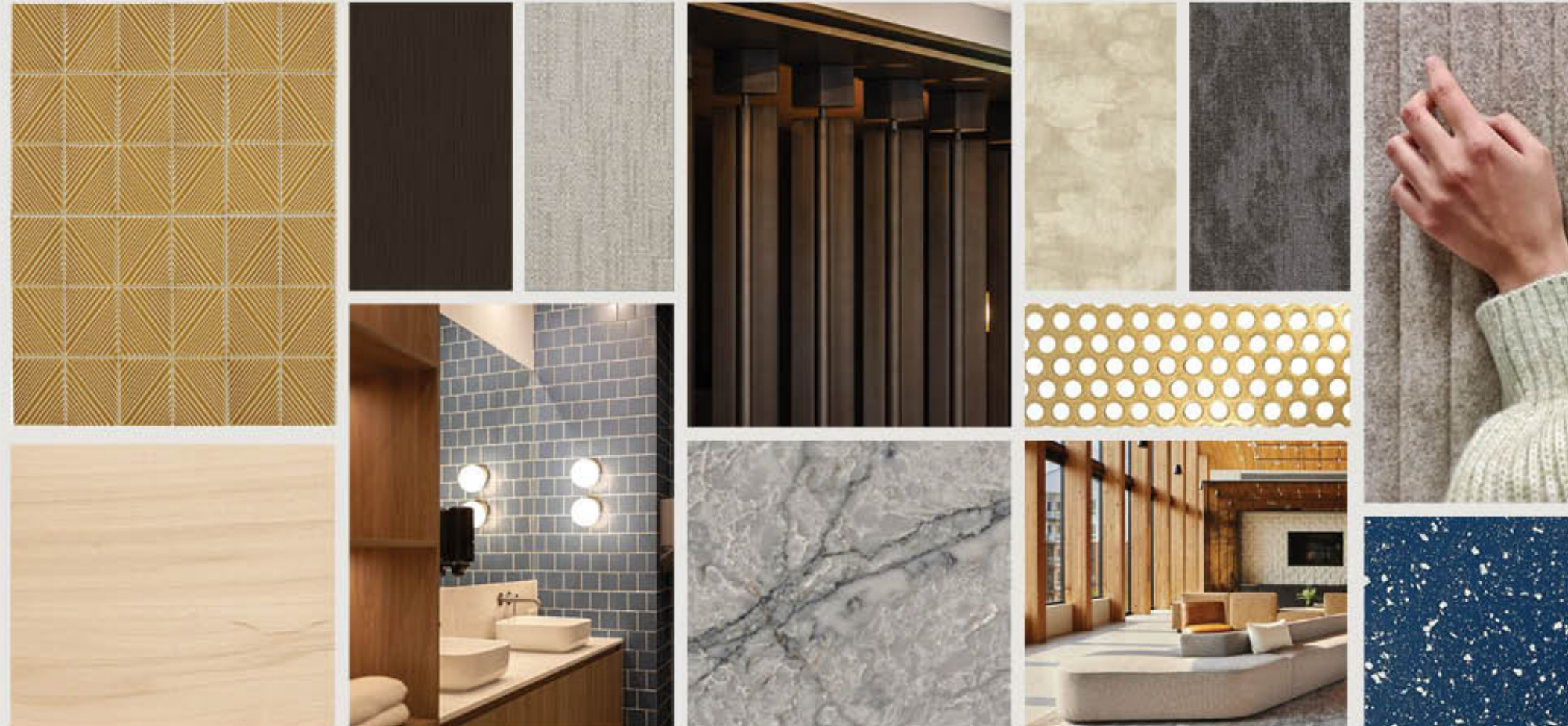
20 May 2025

handprint architecture



OVERALL PALETTE | COMMUNITY

FUTURE-FOCUSED TECH



SUSTAINABLE BEAUTY

UNIFIED VISION

IA | INTERIOR
ARCHITECTS

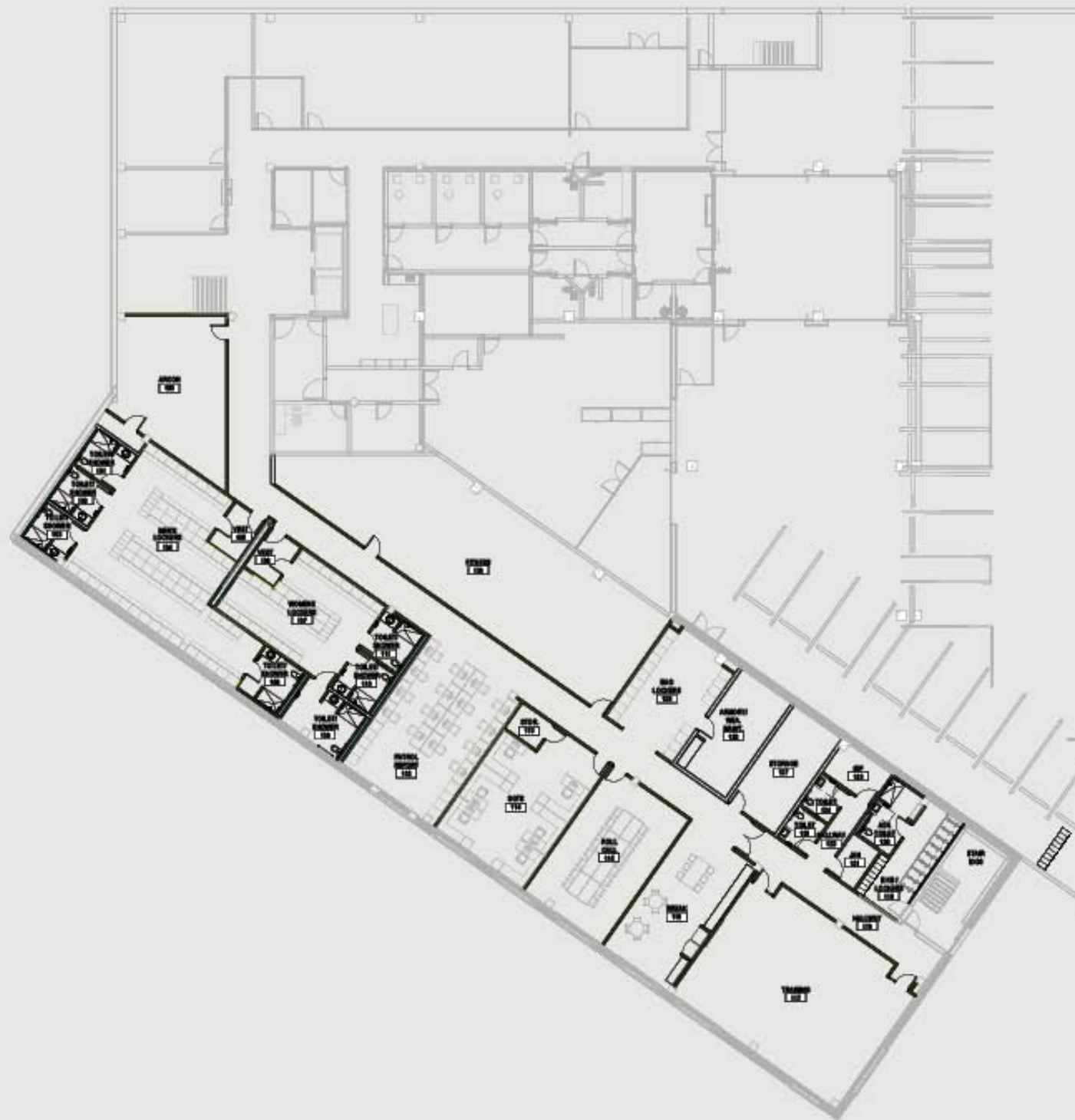
GOLDEN MUNICIPAL BUILDING

20 May 2025

handprint architecture



FLOOR PLAN | LEVEL 01



IA | INTERIOR
ARCHITECTS

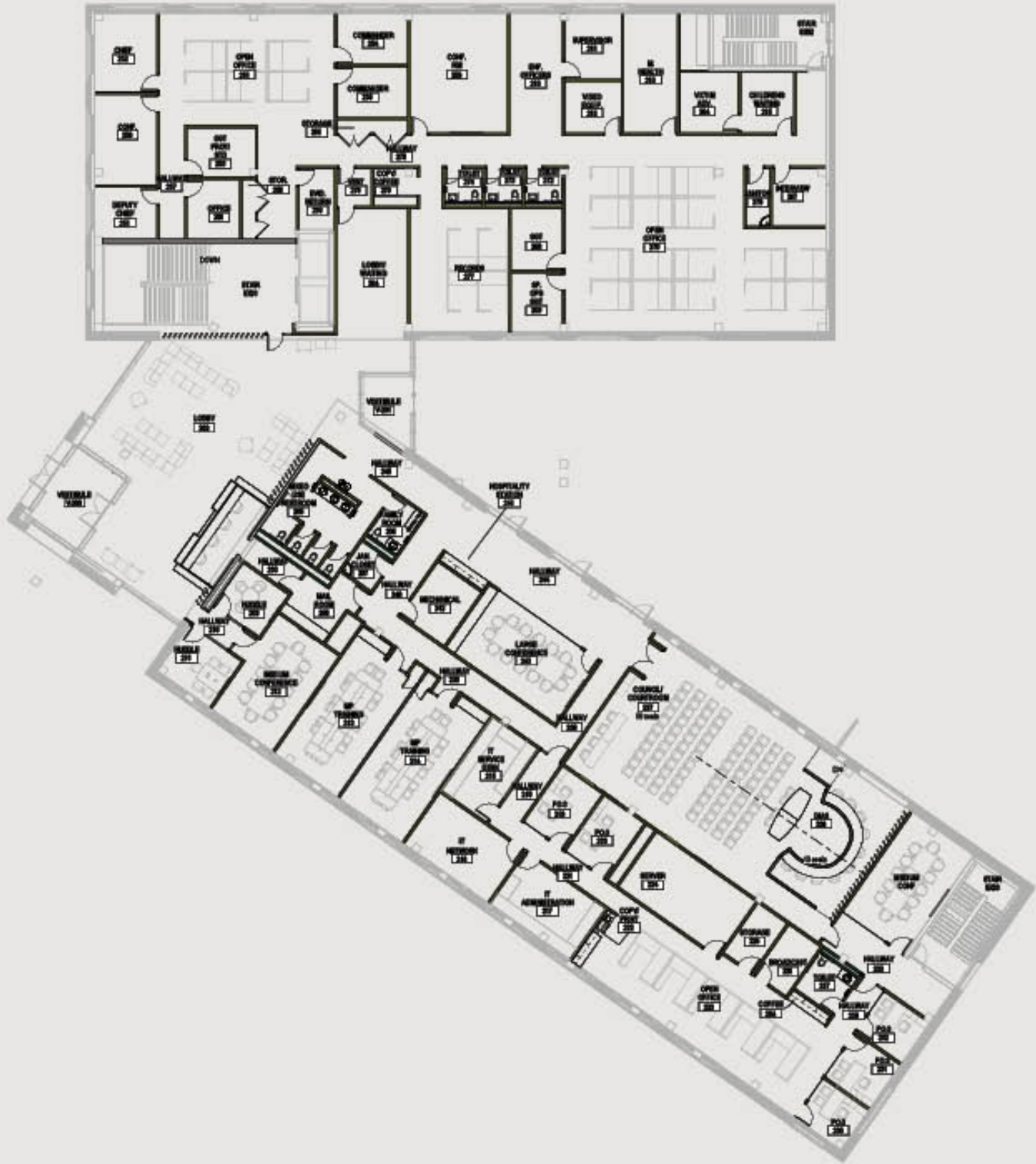
GOLDEN MUNICIPAL BUILDING

20 May 2025

handprint architecture



FLOOR PLAN | LEVEL 02



IA INTERIOR ARCHITECTS

GOLDEN MUNICIPAL BUILDING

20 May 2025

handprint architecture



FLOOR PLAN | LEVEL 03



IA INTERIOR ARCHITECTS

GOLDEN MUNICIPAL BUILDING

20 May 2025

handprint architecture





GOLDEN MUNICIPAL BUILDING

20 May 2025

handprint architecture



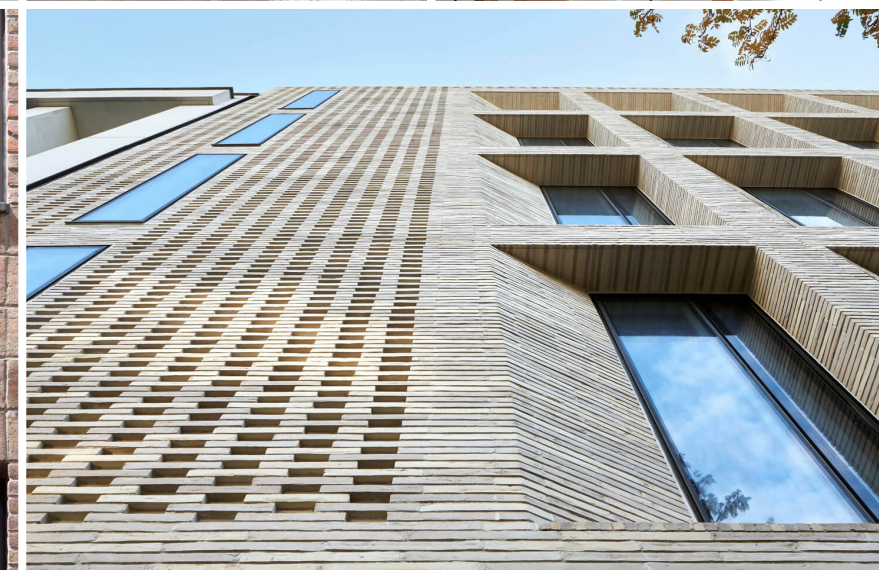
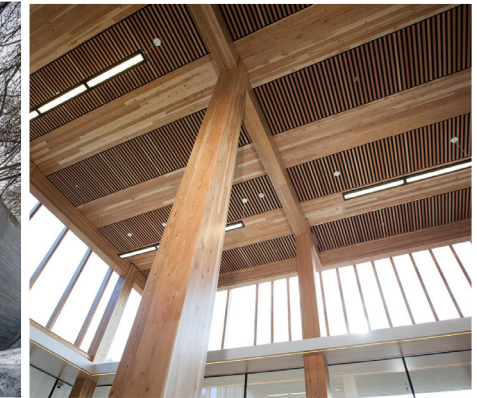


GOLDEN MUNICIPAL BUILDING

20 May 2025

handprint architecture





GOLDEN MUNICIPAL BUILDING

20 May 2025

handprint architecture





GOLDEN MUNICIPAL BUILDING

20 May 2025

handprint architecture





GOLDEN MUNICIPAL BUILDING

20 May 2025

handprint architecture





GOLDEN MUNICIPAL BUILDING

20 May 2025

handprint architecture





GOLDEN MUNICIPAL BUILDING

20 May 2025

handprint architecture





GOLDEN MUNICIPAL BUILDING

20 May 2025

handprint architecture





GOLDEN MUNICIPAL BUILDING

20 May 2025

handprint architecture





GOLDEN MUNICIPAL BUILDING

20 May 2025

handprint architecture

