



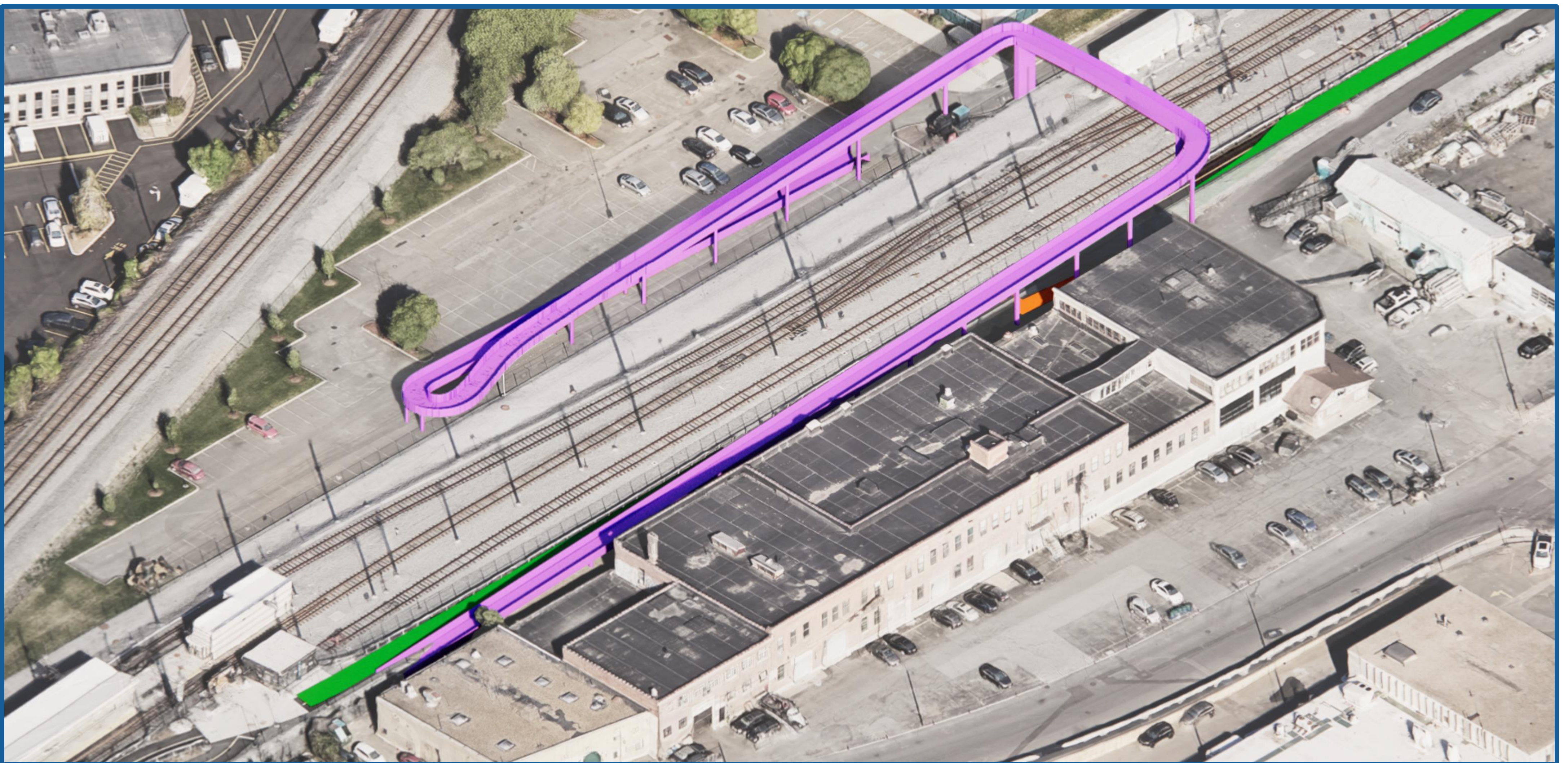
# Inner Belt-Brickbottom Crossing

## Alternative 1: Bridge with Sloped Walkways Only

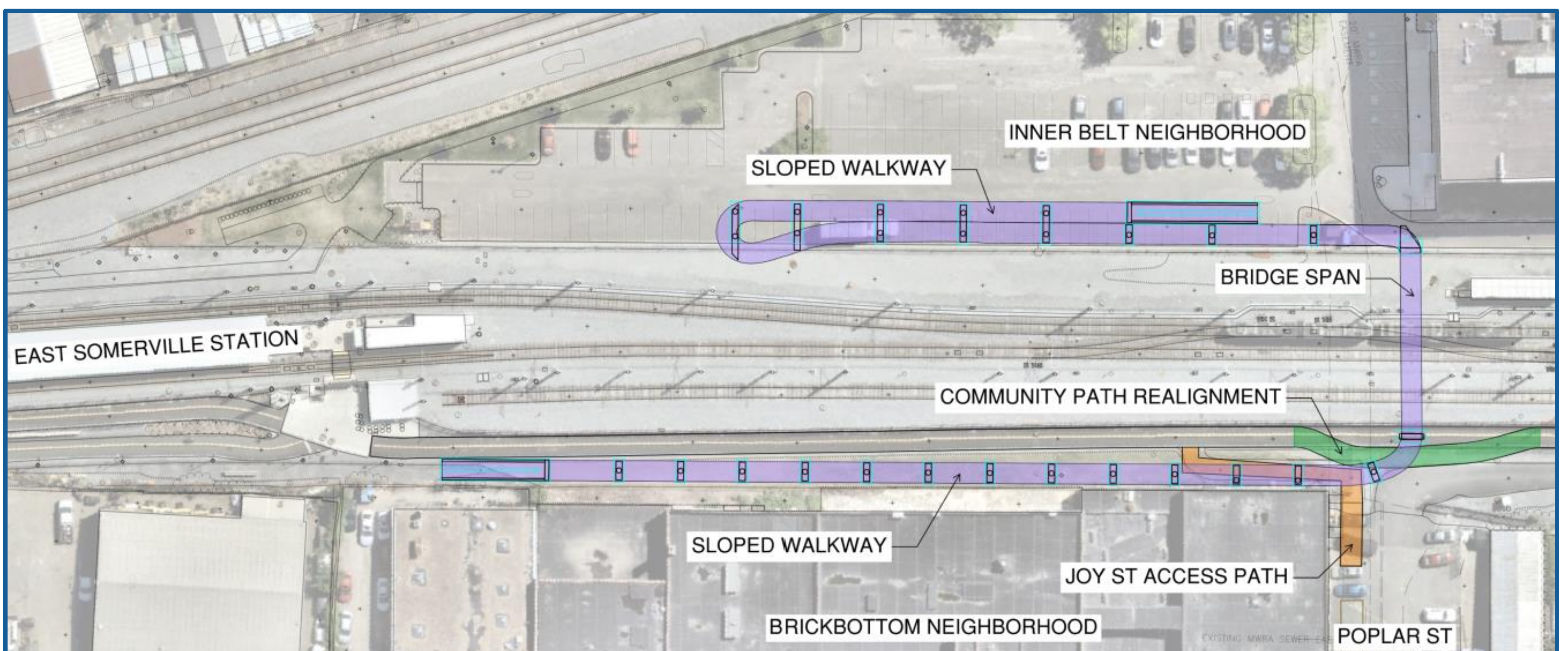


### Key Features

- One accessible means of vertical circulation via sloped walkways (< 5% grade)
- One switchback sloped walkway (Inner Belt side)
- One straight sloped walkway (Brickbottom side), which will provide the most direct route to the MBTA's East Somerville station



Isometric View



Plan View



# Inner Belt-Brickbottom Crossing

## Alternative 2: Bridge with Sloped Walkways and Stairs

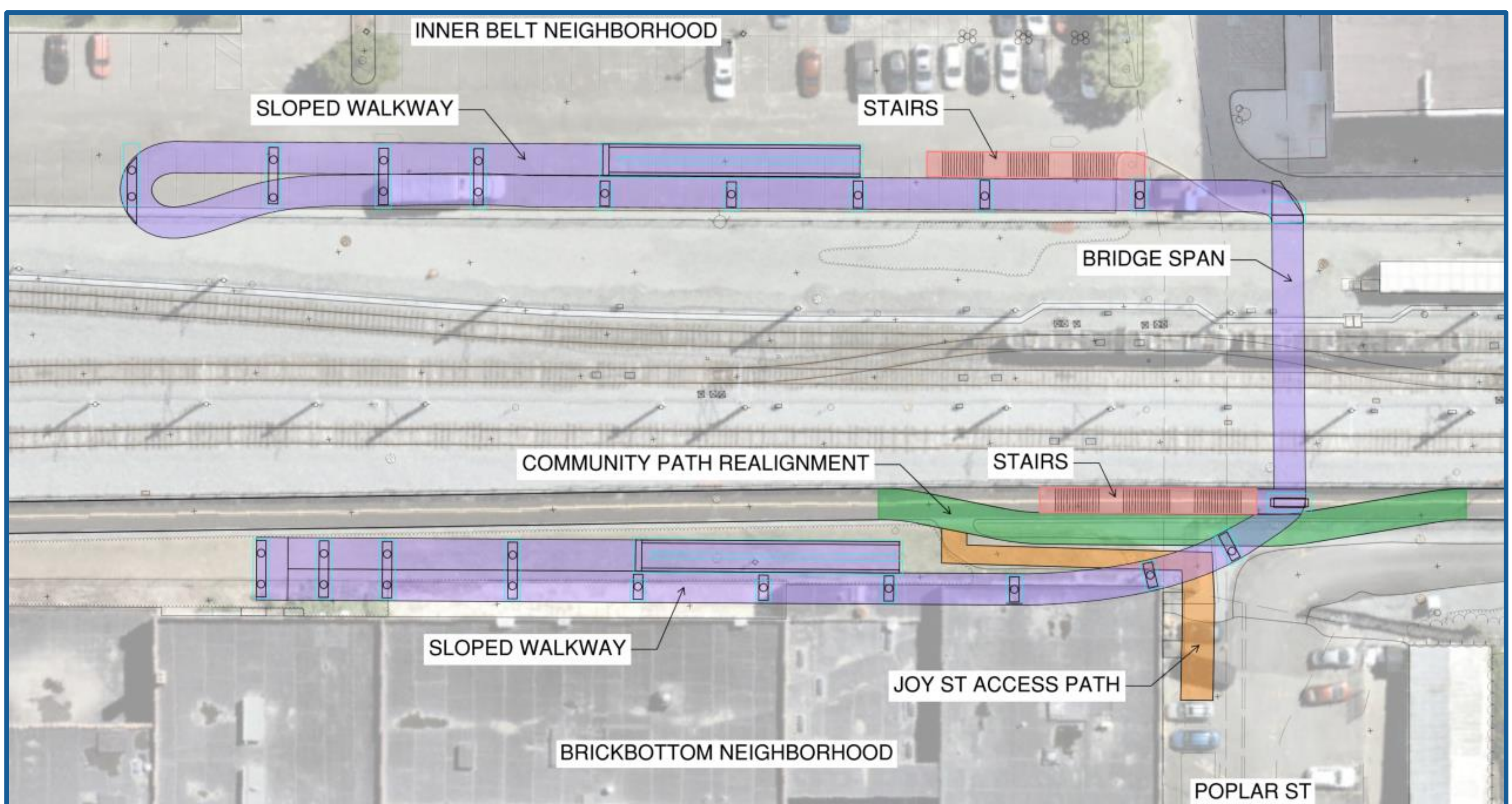


### Key Features

- Two means of vertical circulation
  - One fully accessible (sloped walkways < 5% grade)
  - Stairs
- Per code, where there are two routes, both routes shall meet at the same point
- Sloped walkways with switchbacks on both sides



Isometric View



Plan View



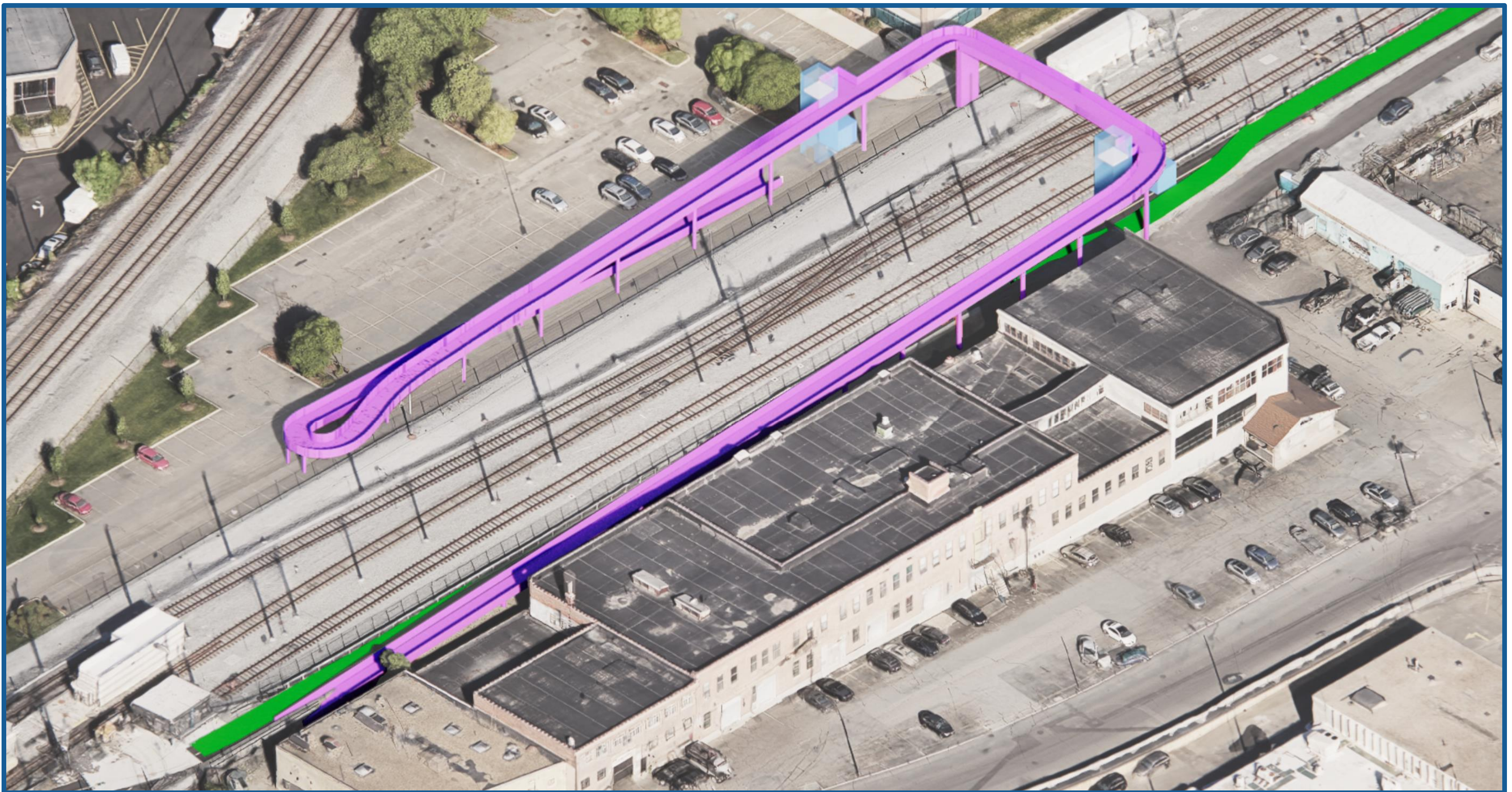
# Inner Belt-Brickbottom Crossing

## Alternative 3: Bridge with Sloped Walkways and Elevators

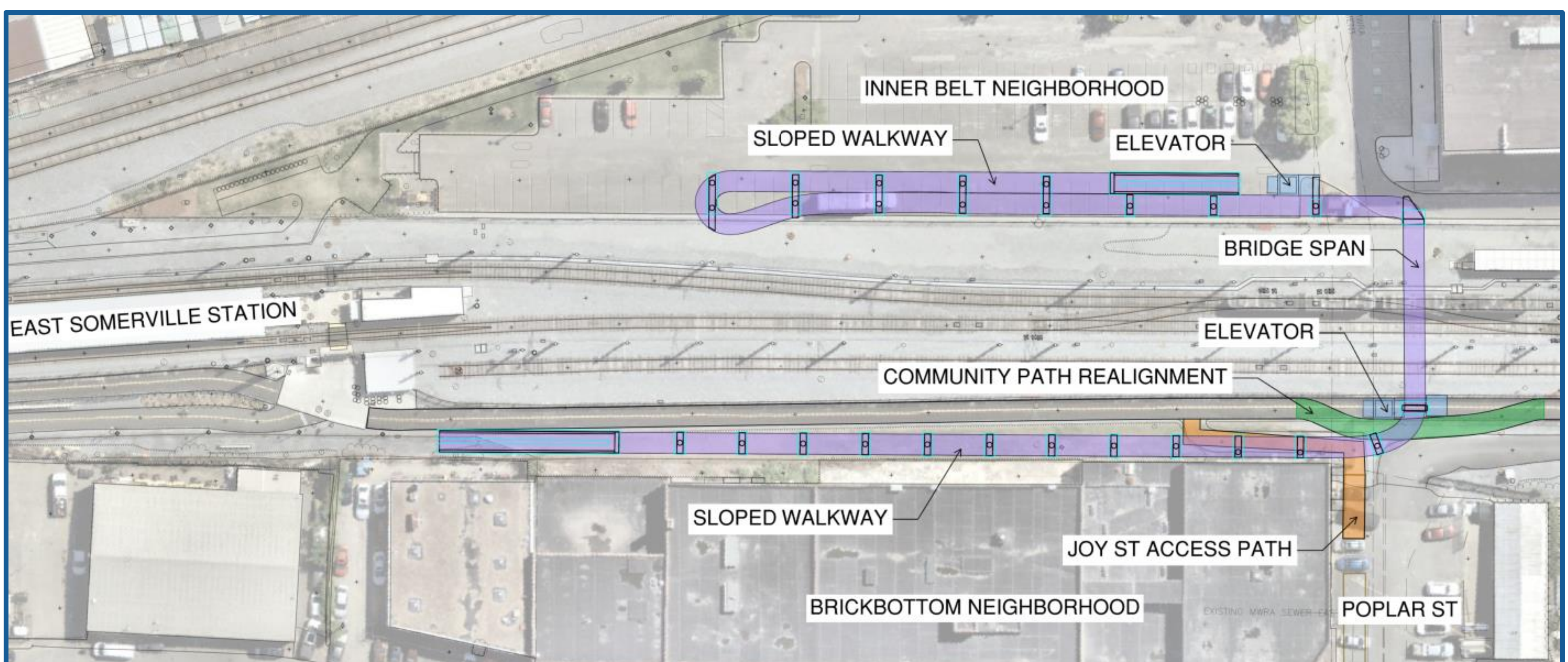


### Key Features

- Two accessible means of vertical circulation
  - Sloped walkways (< 5% grade)
  - Elevators
- One switchback sloped walkway (Inner Belt side)
- One straight sloped walkway (Brickbottom side), which will provide the most direct route to the MBTA's East Somerville station



Isometric View



Plan View



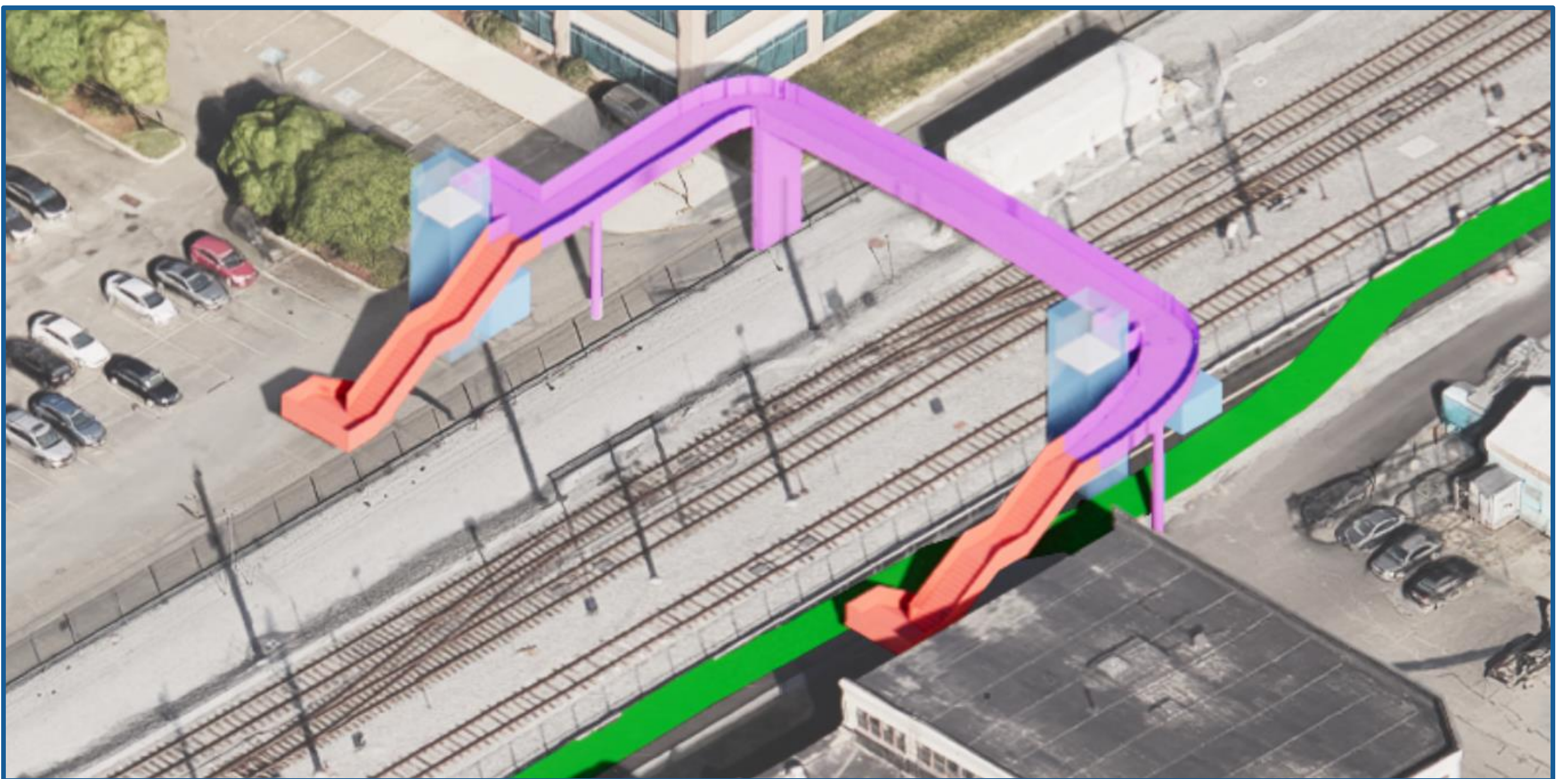
# Inner Belt-Brickbottom Crossing

## Alternative 4: Bridge with Stairs and Elevators

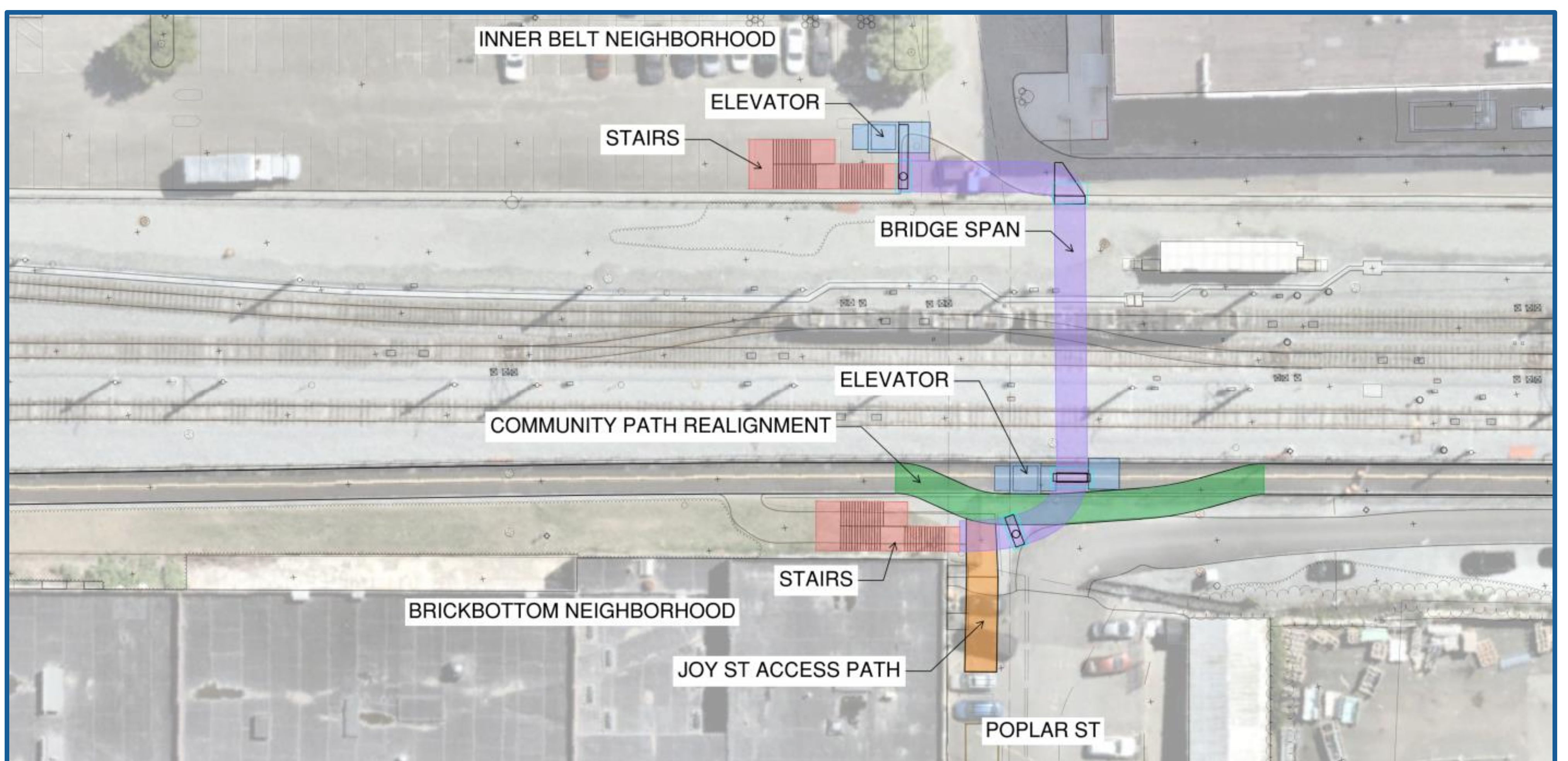


### Key Features

- Two means of vertical circulation;
  - One accessible option (elevators)
  - Stairs
- Limited redundancy
- Limited cyclist usability



Isometric View



Plan View



# Inner Belt-Brickbottom Crossing

## Alternative 5: At-grade crossing near Poplar Street

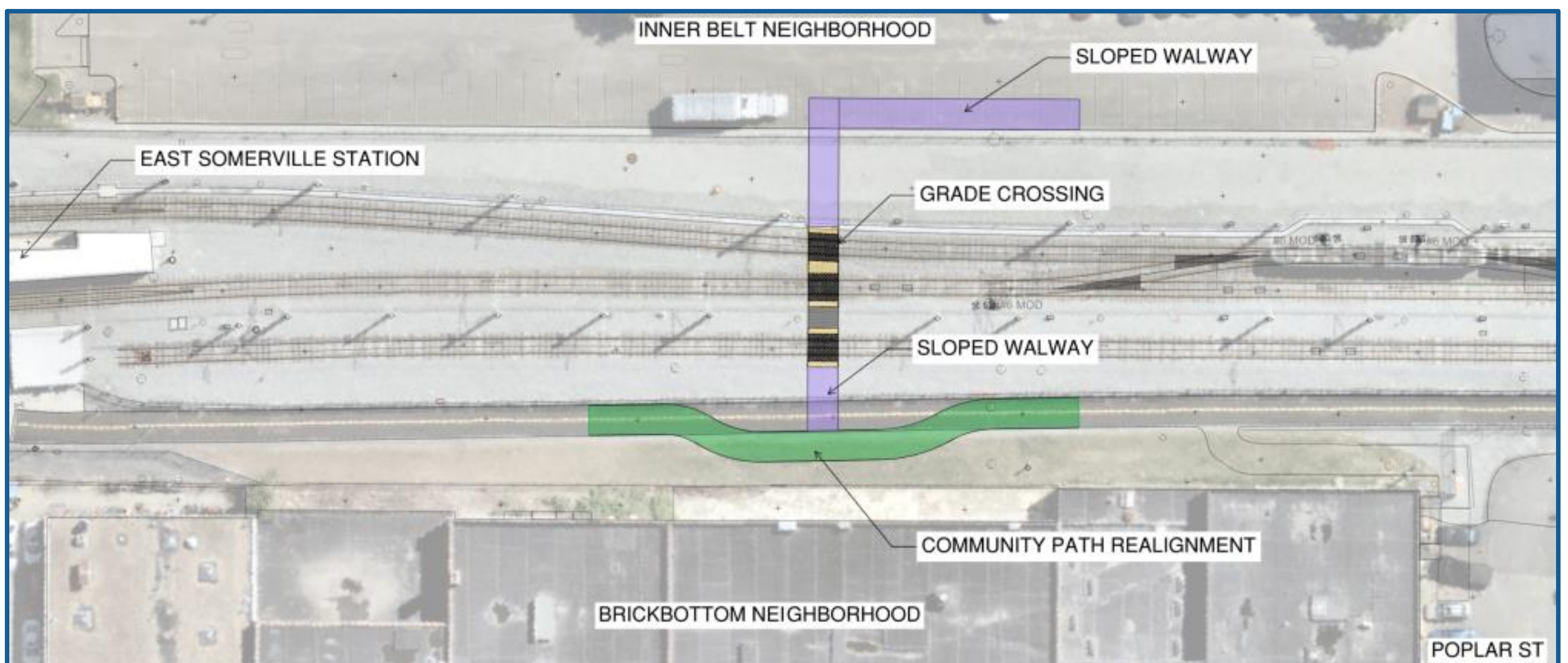


### Key Features

- Has two short sloped walkways
- Fully accessible crossing
- Includes active warning devices and other safety measures to warn users of oncoming trains
- Crosses three tracks
- Directly links the Inner Belt and Brickbottom neighborhoods



Isometric View



Plan View



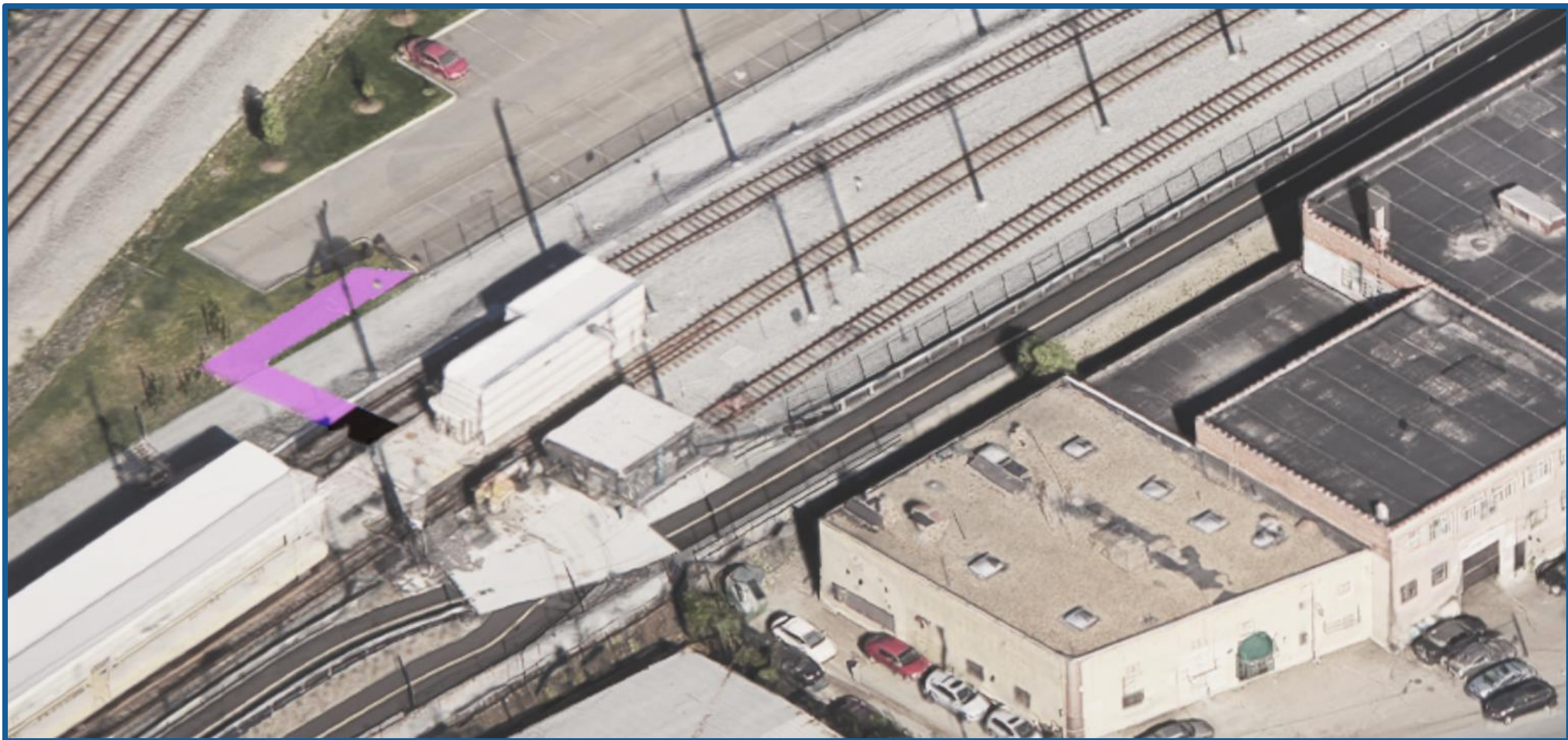
# Inner Belt-Brickbottom Crossing

## Alternative 6: At-grade crossing at East Somerville Station

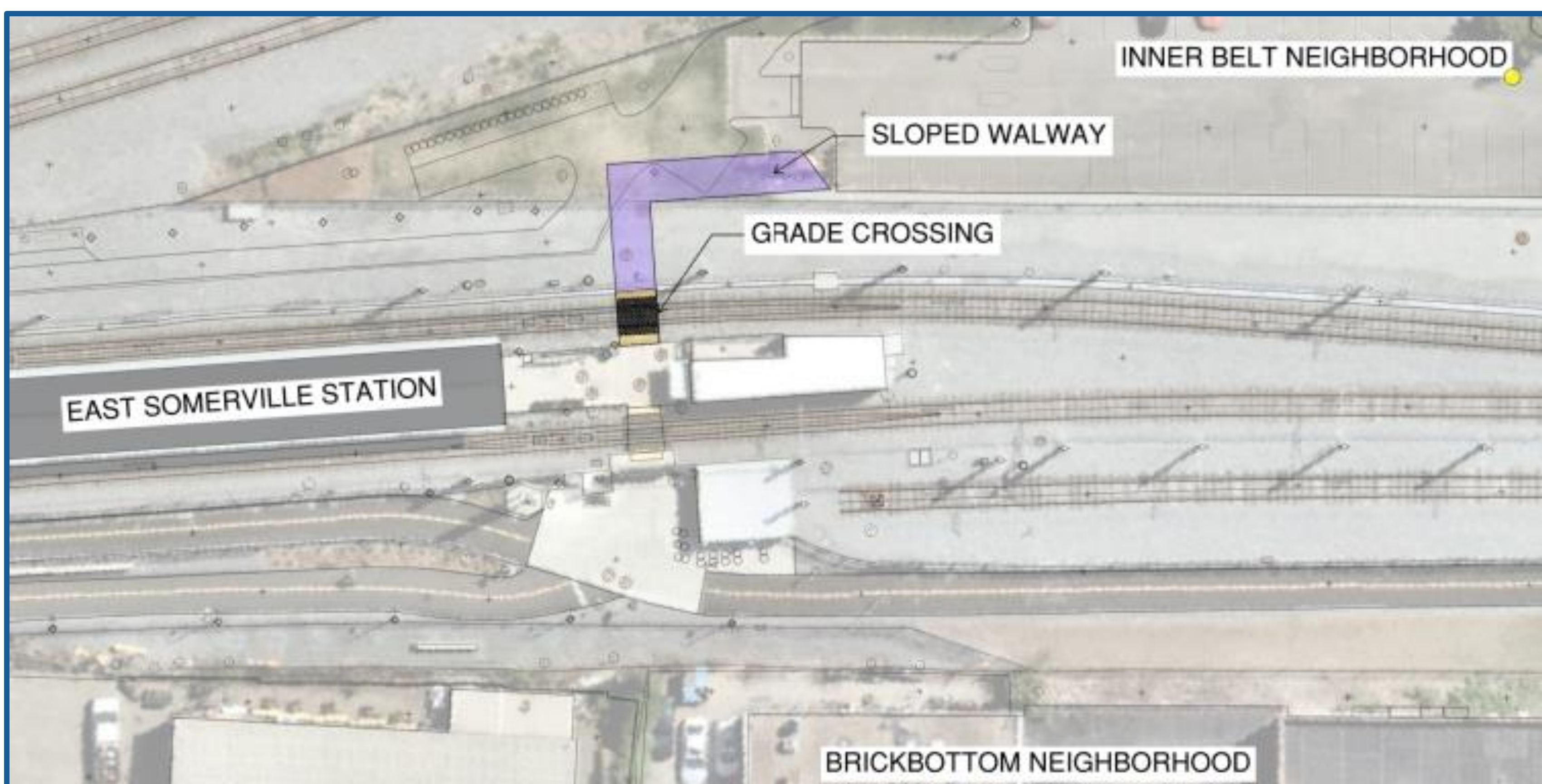


### Key Features

- Has one short sloped walkway
- Fully accessible crossing
- May include active warning devices and other safety measures to warn users of oncoming trains, or a new signal for approaching trains to stop
- Crosses one track
- Provides permanent access between Inner Belt and the MBTA's East Somerville station
- Also provides a connection between the Inner Belt and Brickbottom neighborhoods



Isometric View



Plan View