

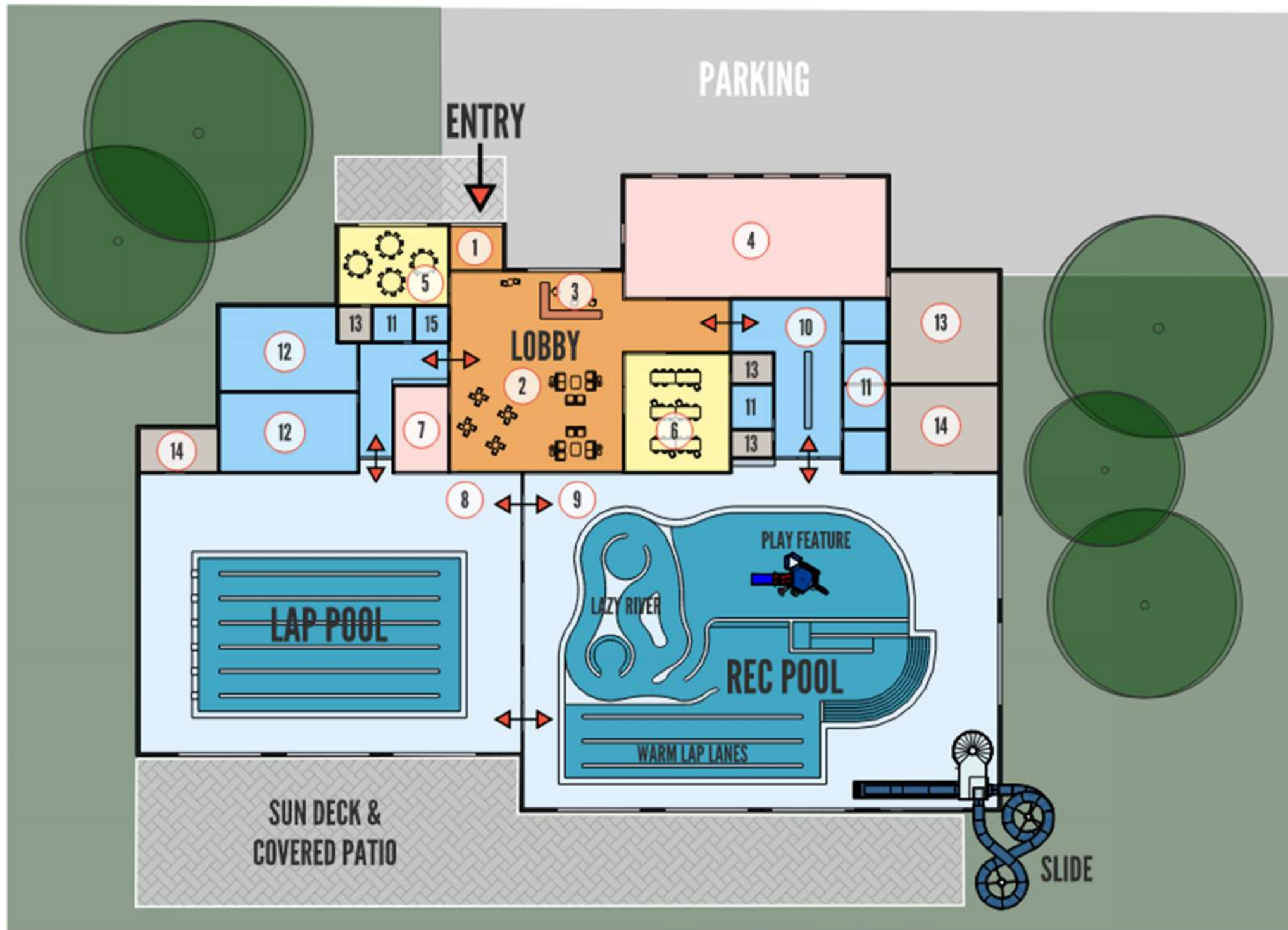
# SURVEY #2 FEEDBACK



REGIONAL AQUATIC FACILITY FEASIBILITY STUDY



SEPT 16, 2021



- 1 ENTRY VESTIBULE
- 2 LOBBY / LOUNGE
- 3 WELCOME DESK
- 4 ADMINISTRATION (OFFICES, WORK ROOM, BREAK ROOM)
- 5 CLASSROOM (30 PERSON)
- 6 PARTY ROOM (35 PERSON)
- 7 LIFEGUARD
- 8 LAP POOL (25 YARD - 6 LANES)
- 9 RECREATION / LEISURE POOL
- 10 LOCKERS & CHANGING ROOM HALL
- 11 PRIVATE CHANGING ROOMS
- 12 MENS / WOMENS LOCKER ROOMS
- 13 BUILDING EQUIPMENT / STORAGE
- 14 POOL EQUIPMENT / STORAGE
- 15 UNISEX RESTROOM

## OPTION 01

REGIONAL AREA AQUATICS FACILITY  
OLYMPIA|TUMWATER|LACEY



SCALE: 1"=30'



REGIONAL AQUATIC FACILITY FEASIBILITY STUDY



SEPT 16, 2021

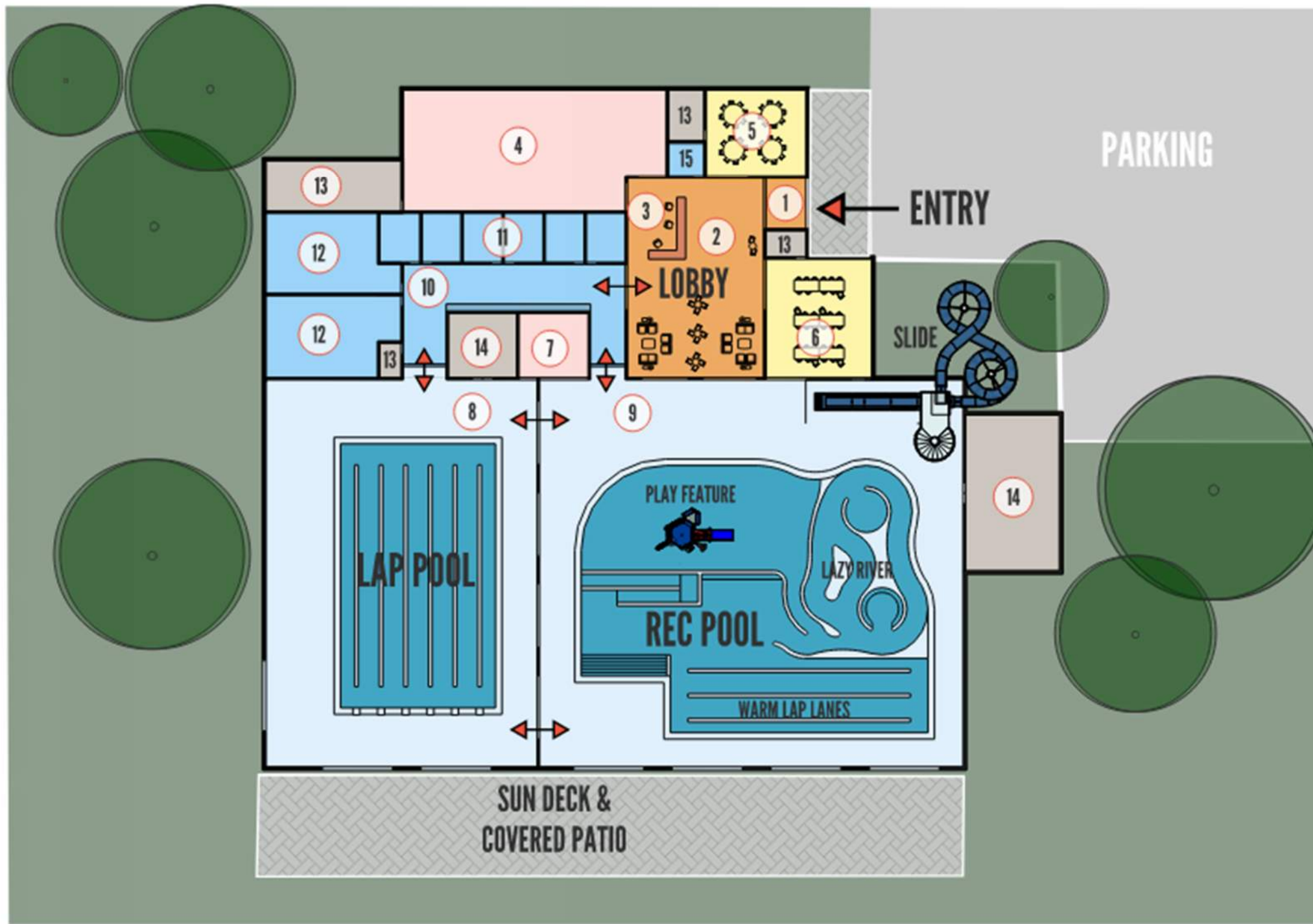
## PREFERENCES

**LARGE LOBBY  
VIEWS INTO BOTH POOLS  
SEPARATE LOCKERS AND FAMILY LOCKERS  
PARTY ROOM LOCATION  
FLOW & GENERAL LAYOUT  
SLIDE FURTHER AWAY FROM PARKING  
CLASSROOM LOCATION  
POOL CONFIGURATION  
ADMINISTRATION LOCATION**

## IMPROVEMENTS

**LOBBY TOO LARGE  
CLASSROOM HARD TO SEE  
PARTY ROOM TOO SMALL  
CHANGING ROOM CALLED GENDER NEUTRAL  
NOT GREAT LOCATION FOR SPECTATOR SEATING  
LAP LANES ARE TOO FAR FROM CHANGING ROOMS**





- 1 ENTRY VESTIBULE
- 2 LOBBY / LOUNGE
- 3 WELCOME DESK
- 4 ADMINISTRATION (OFFICES, WORK ROOM, BREAK ROOM)
- 5 CLASSROOM (30 PERSON)
- 6 PARTY ROOM (35 PERSON)
- 7 LIFEGUARD
- 8 LAP POOL (25 YARD - 6 LANES)
- 9 RECREATION / LEISURE POOL
- 10 LOCKERS & CHANGING ROOM HALL
- 11 PRIVATE CHANGING ROOMS
- 12 MENS / WOMENS LOCKER ROOMS
- 13 BUILDING EQUIPMENT / STORAGE
- 14 POOL EQUIPMENT / STORAGE
- 15 UNISEX RESTROOM

## OPTION 02

REGIONAL AREA AQUATICS FACILITY  
OLYMPIA|TUMWATER|LACEY



SCALE: 1"=30'

## PREFERENCES

## IMPROVEMENTS

**LOCKER ROOMS & CHANGING ROOMS TOGETHER**  
**WELCOME DESK VISIBLE FROM ENTRY**  
**SLIDE AWAY FROM SUN DECK**  
**PARTY ROOM LOCATION**  
**REC POOL / LAP POOL ORIENTATION**  
**CLASSROOM LOCATION**  
**GUARD OFFICE LOCATION**  
**LOBBY SIZE**  
**ADMINISTRATION LOCATION**

**PREFER OPTION 01**  
**CANNOT SEE BOTH POOLS FROM LOBBY**  
**ADD GENDER NEUTRAL CHANGING TO LOCKERS**  
**WALK THROUGH CHANGING ROOM "HALL" TO LOCKERS**  
**SUN DECK & PATIO SEEM TOO LARGE**

