

# Powder House Boulevard & Alewife Brook Parkway Intersection Improvement Project

Community Meeting  
February 1, 2023



**Mayor**  
Katjana Ballantyne

**Ward 7 City Councilor**  
Judy Pineda-Neufeld

# Agenda

Project Team: Roles and Contact Information

Design and Community Engagement Process

Brief Overview of the Project

Construction Timeline

Traffic Management and Detour

Clarendon Hill Public Housing Redevelopment

Questions

Rebecca  
Wright

Project Manager  
Email: [rwright@somervillema.gov](mailto:rwright@somervillema.gov)

Jesse  
Moos

Construction Liaison  
Email: [jmoos@somervillema.gov](mailto:jmoos@somervillema.gov)

Nick  
Alakel

Construction Public Information Officer  
Email: [nalakel@somervillema.gov](mailto:nalakel@somervillema.gov)

# Project Team City of Somerville





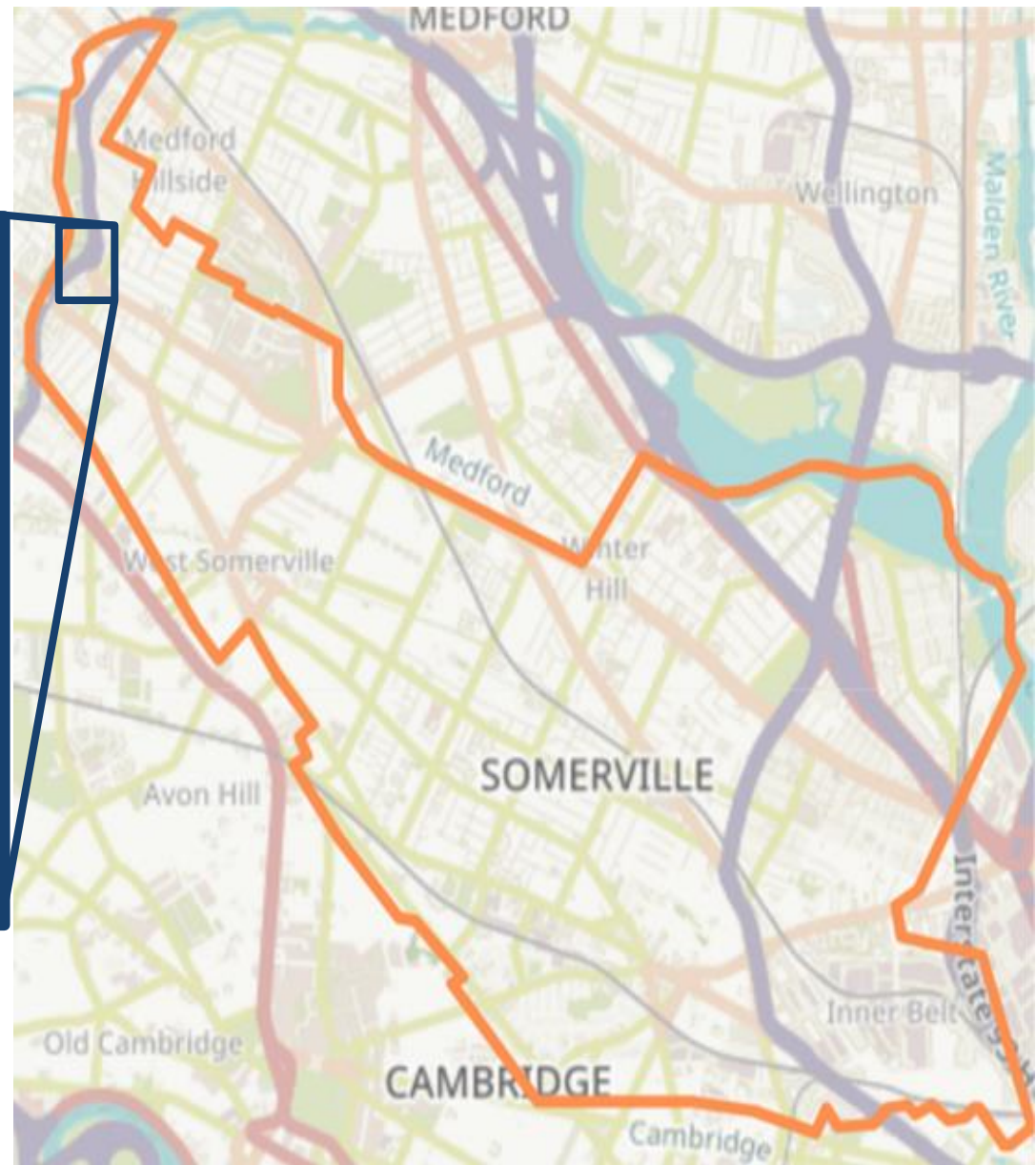
**R.M. Pacella:** General Contractor



**Tetra Tech:** Design Engineer &  
Construction Oversight

Construction  
Project Team

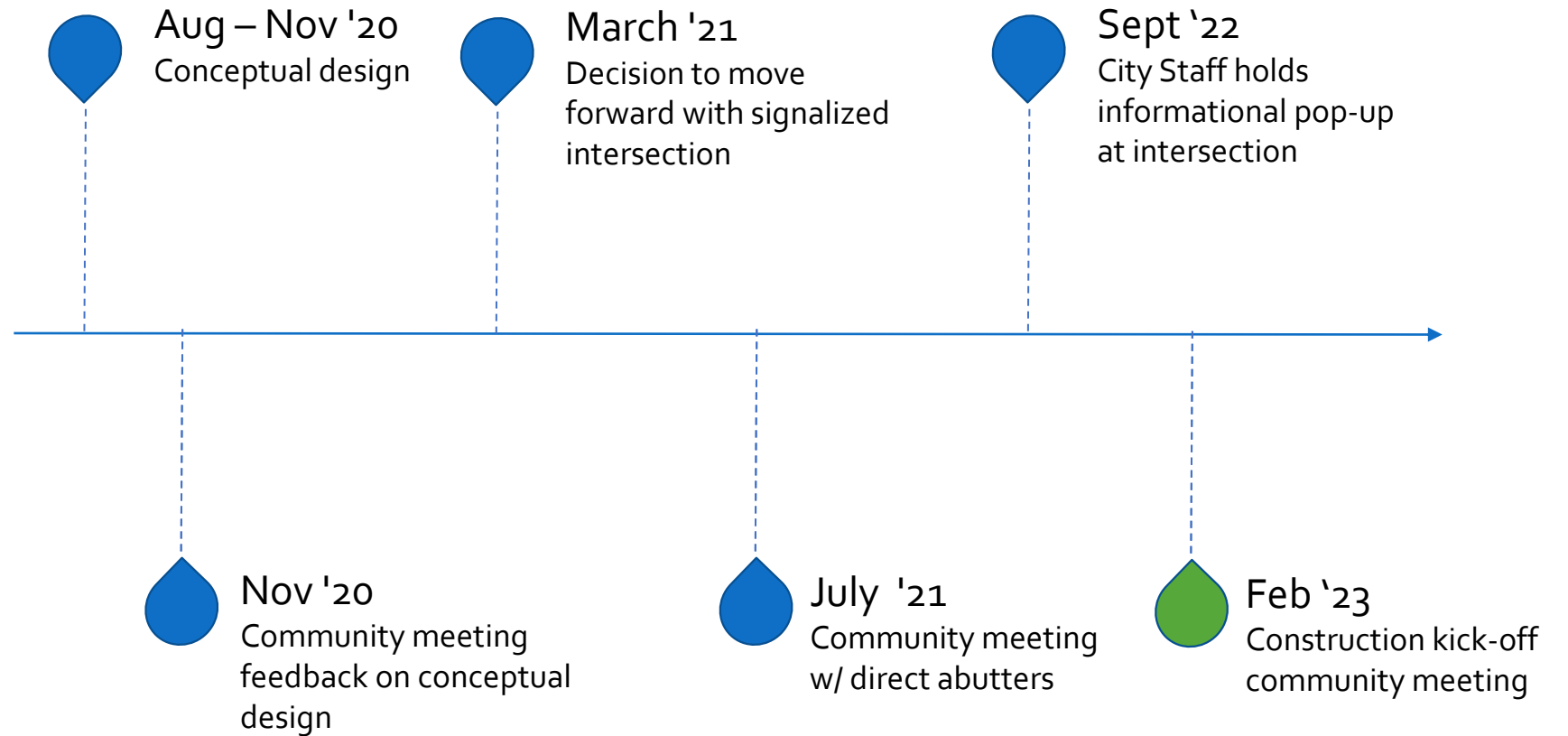
# Project Location



# Project Limits



# Design and Community Engagement Process



More info on the community engagement and design process including previous meeting slides available at [sommervillema.gov/intersectionredesign](https://sommervillema.gov/intersectionredesign)



# Project Description and Intent

## Why is this intersection being reconstructed?

- The current intersection is a high crash location (48 crashes between 2014-21) and is being prioritized for improvement. Learn more: [Somervillema.gov/visionzero](https://somerillema.gov/visionzero)
- Reconstruction presents an opportunity to improve safety for everyone traveling along the road. A collaboration between DCR and the City of Somerville.
- Somerville has received funding through the Commonwealth's MassWorks Infrastructure Program for this project.





# Key Improvements



Signalized T-  
shaped intersection



Sewer  
Rehabilitation



Storm Drain  
Rehabilitation



Mobility  
Improvements



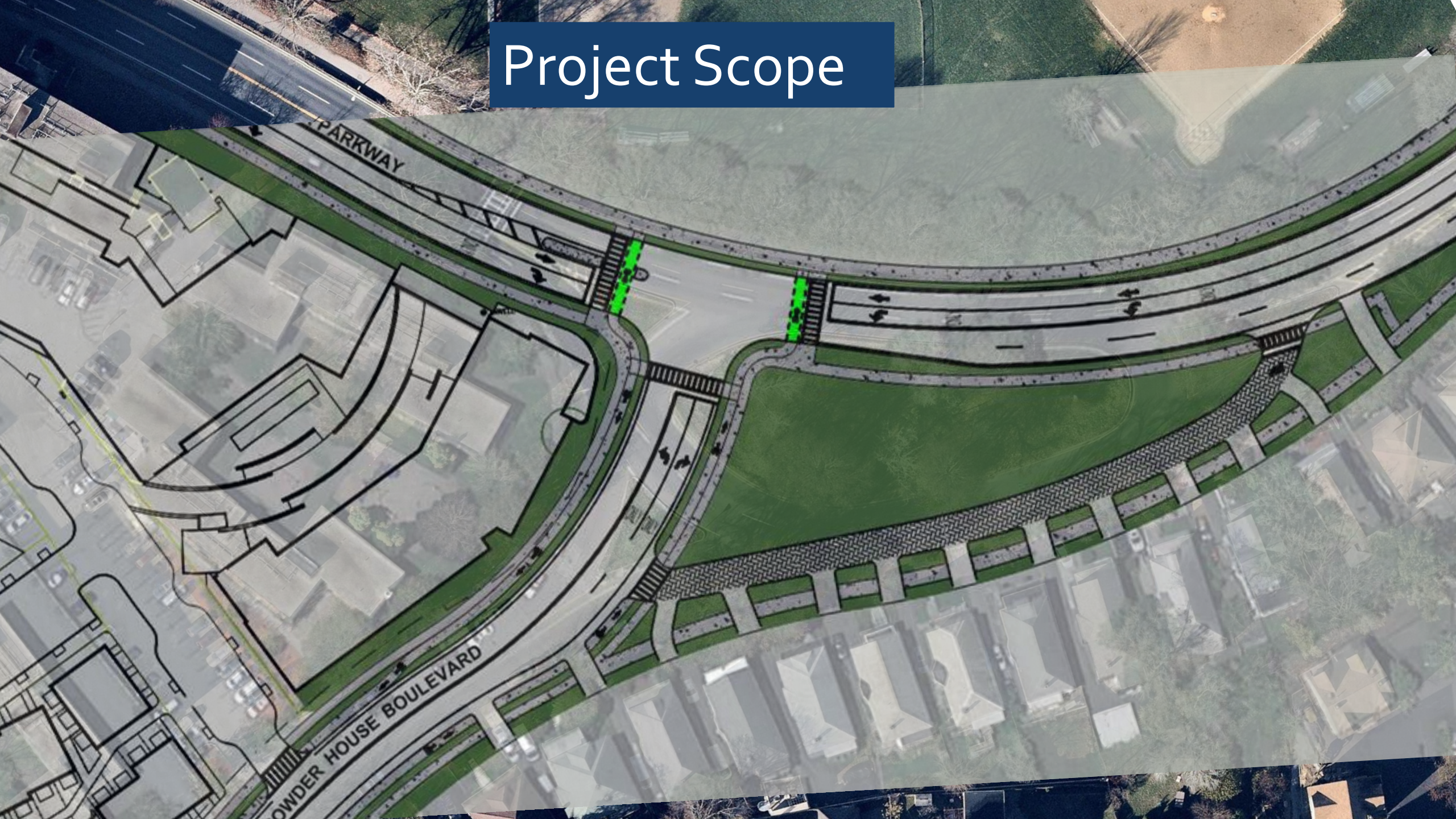
Tree Planting



Improved  
Residential Access



# Project Scope

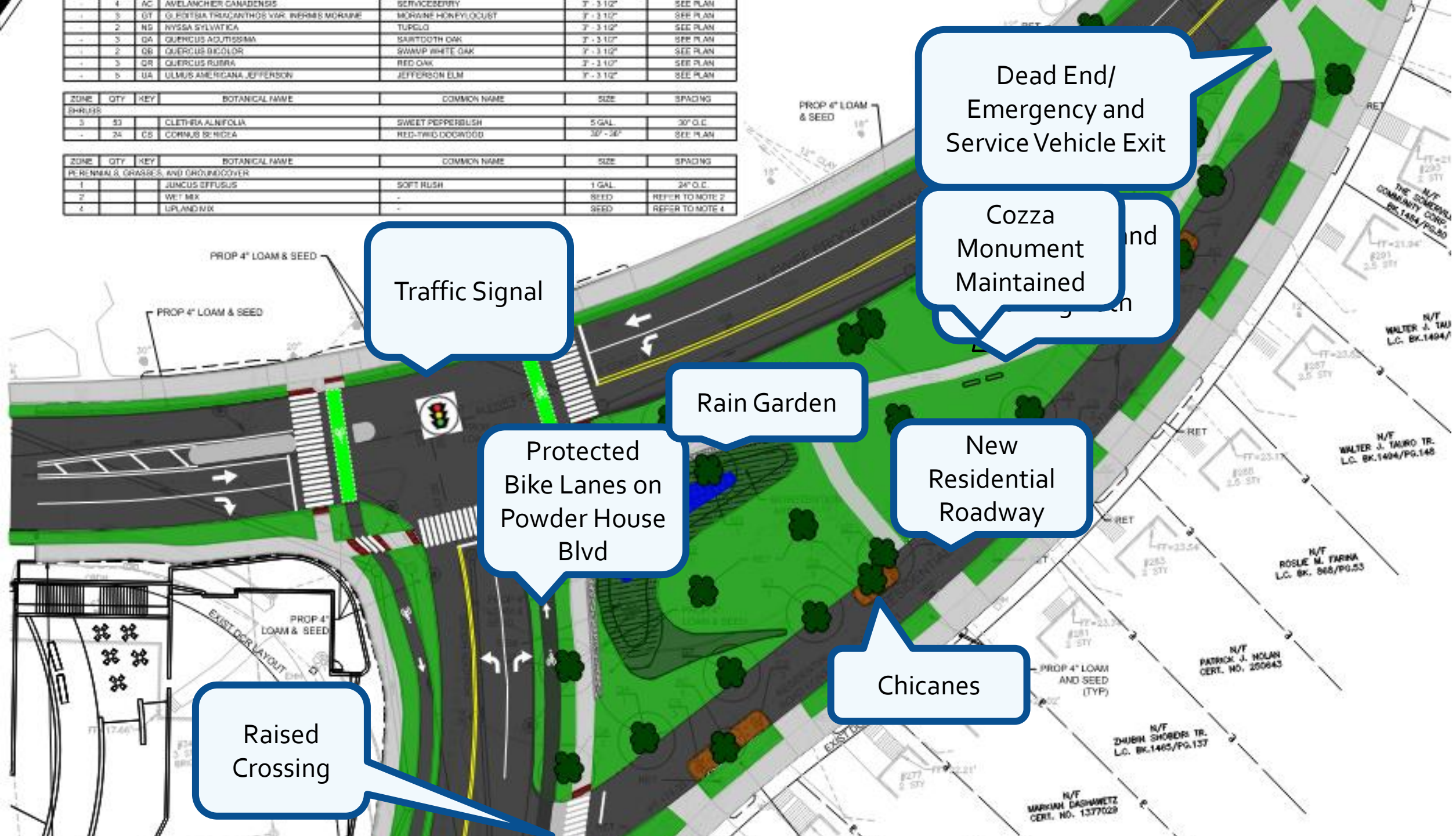




4	AC	AMELANCHIER CANADENSIS	SERVICEBERRY	3" - 3 1/2"	SEE PLAN
5	QT	GLADSTEA TRIACANTHOS VAR. INFRIGES MORRIS	MORRIS HONEYLOCUST	3" - 3 1/2"	SEE PLAN
2	NS	NYSSA SYLVATICA	TURPLOT	3" - 3 1/2"	SEE PLAN
3	QA	QUERCUS ACUTISSIMA	SARTWORTH OAK	3" - 3 1/2"	SEE PLAN
2	QB	QUERCUS BICOLOR	SWAMP WHITE OAK	3" - 3 1/2"	SEE PLAN
3	QR	QUERCUS RUBRA	RED OAK	3" - 3 1/2"	SEE PLAN
5	QA	ULMUS AMERICANA JEFFERSON	JEFFERSON ELM	3" - 3 1/2"	SEE PLAN

ZONE	QTY	KEY	BOTANICAL NAME	COMMON NAME	SIZE	SPACING
SHRUBS						
3	SD		CLETHRA ALNIFOLIA	SWEET PEPPERBUSH	5 GAL.	30' O.C.
24	CS		CORNUS SERICEA	RED-TWIG DOGWOOD	30" - 36"	SEE PLAN

ZONE	QTY	KEY	BOTANICAL NAME	COMMON NAME	SIZE	SPACING
PERENNIALS, GRASSES, AND GROUNDCOVER						
1			JUNCUS EFFUSUS	SOFT RUSH	1 GAL.	24" O.C.
2			WET MIX	-	SEED	REFER TO NOTE 2
4			UPLAND MIX	-	SEED	REFER TO NOTE 4



Traffic Signal

Rain Garden

Protected Bike Lanes on Powder House Blvd

New Residential Roadway

Chicanes

Raised Crossing

Dead End/  
Emergency and  
Service Vehicle Exit

Cozza  
Monument  
Maintained

N/F  
THE SOMERSET  
COMMUNITY CORP.  
RES. 1454 / PG. 80  
FT=21.34'  
2.5 STY

N/F  
WALTER J. TAU  
L.C. BK. 1494 /  
FT=23.5'  
2.5 STY

N/F  
WALTER J. TAU TR.  
L.C. BK. 1494 / PG. 145  
FT=23.5'  
2.5 STY

N/F  
ROSIE M. FARNA  
L.C. BK. 845 / PG. 53  
FT=23.5'  
2 STY

N/F  
PATRICK J. HOUAN  
CERT. NO. 250643  
FT=23.5'  
2 STY

N/F  
ZHUEN SHORER TR.  
L.C. BK. 1465 / PG. 137  
FT=22.21'  
2 STY

N/F  
MARIAN DASHAWETZ  
CERT. NO. 1377029  
FT=22.21'  
2 STY





	Winter '23	Spring '23	Summer '23	Fall '23	Winter '23/'24	Spring '24	Summer '24
Begin Road Construction	✕						
Underground Utility Work: Drainage and Sewer	✕		✕				
Surface Work: Road and Sidewalks		✕					✕
Traffic Signal Work				✕	✕		
Project Completion							✕

# Construction Schedule

# Tree Removal and Planting

- Tree removal hearing held 1/5/23 – No objections raised
- New trees anticipated during 2024 planting season



**6 Tree Removals**



**22 New Trees**

PLANT LIST - THIS SHEET

ZONE	QTY	KEY	BOTANICAL NAME	COMMON NAME
DECIDUOUS TREES				
-	4	AC	AMELANCHIER CANADENSIS	SERVICEBERRY
-	3	GT	GLEDTISIA TRIACANTHOS VAR. INERMIS MORAIN	MORAIN HONEYLOCUST
-	2	NS	NYSSA SYLVATICA	TUPELO
-	3	QA	QUERCUS ACUTISSIMA	SAWTOOTH OAK
-	2	QB	QUERCUS BICOLOR	SWAMP WHITE OAK
-	3	QR	QUERCUS RUBRA	RED OAK
-	5	UA	ULMUS AMERICANA JEFFERSON	JEFFERSON ELM

ZONE	QTY	KEY	BOTANICAL NAME	COMMON NAME
SHRUBS				
3	53		CLETHRA ALNIFOLIA	SWEET PEPPERBUSH
-	24	CS	CORNUS SERICEA	RED-TWIG DOGWOOD

ZONE	QTY	KEY	BOTANICAL NAME	COMMON NAME
PERENNIALS, GRASSES, AND GROUND COVER				
1			JUNCUS EFFUSUS	SOFT RUSH
2			WET MIX	-
4			UPLAND MIX	-

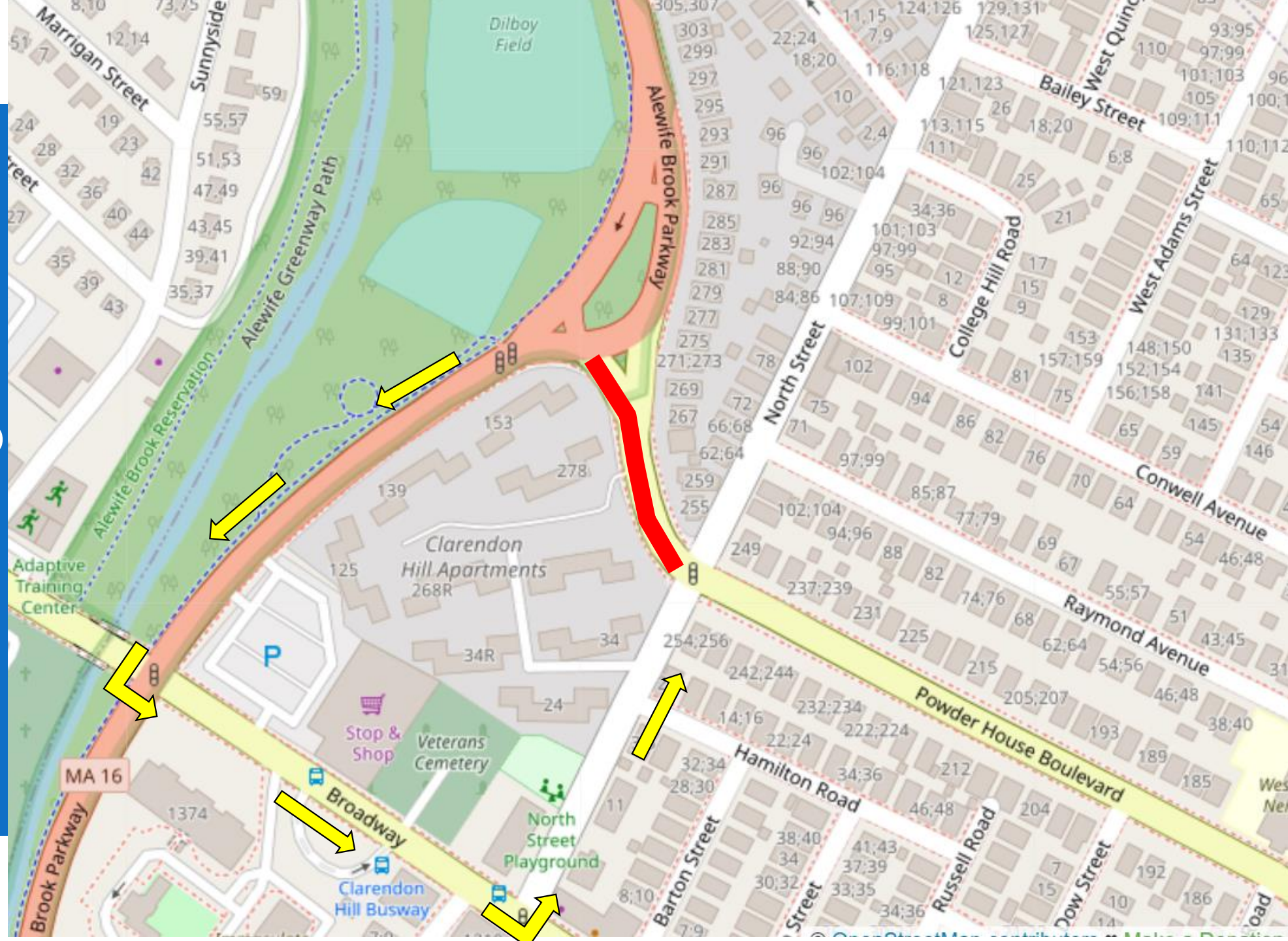
ZONE	QTY	KEY	BOTANICAL NAME	COMMON NAME	SIZE	SPACING
PERENNIALS, GRASSES, AND GROUND COVER						
3	53		CLETHRA ALNIFOLIA	SWEET PEPPERBUSH	5 GAL.	30" O.C.
-	24	CS	CORNUS SERICEA	RED-TWIG DOGWOOD	30" - 36"	SEE PLAN
TREES						
3	GT		GLEDTISIA TRIACANTHOS VAR. INERMIS MORAIN	MORAIN HONEYLOCUST	2" - 3 1/2"	SEE PLAN
-	2	NS	NYSSA SYLVATICA	TUPELO	2" - 3 1/2"	SEE PLAN
-	3	QA	QUERCUS ACUTISSIMA	SAWTOOTH OAK	2" - 3 1/2"	SEE PLAN
-	2	QB	QUERCUS BICOLOR	SWAMP WHITE OAK	2" - 3 1/2"	SEE PLAN
-	3	QR	QUERCUS RUBRA	RED OAK	2" - 3 1/2"	SEE PLAN
-	5	UA	ULMUS AMERICANA JEFFERSON	JEFFERSON ELM	2" - 3 1/2"	SEE PLAN





# 24/7 Detour: Alewife Brook Pkwy Southbound to Powder House Blvd

Starting ~2 weeks from now  
through the end of summer





# Clarendon Hill Redevelopment

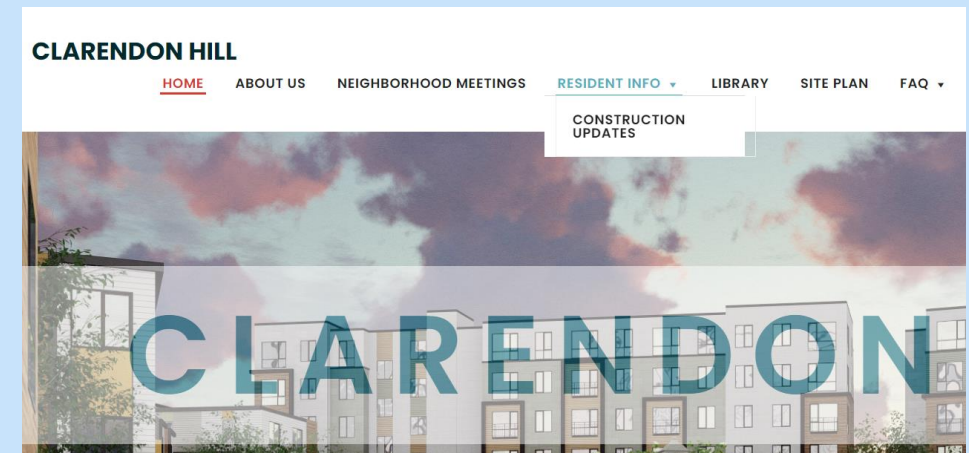
## How does this project relate to the Clarendon Hill Redevelopment?

- The Clarendon Hill Redevelop is independent project led by a develop team made up of the Somerville Housing Authority, Preservation of Affordable Housing, Somerville Community Corporation, and Redgate.
- Our project team will be in continuous communication with the Clarendon Hill Redevelopment team to ensure construction of both projects is able to move forward efficiently.

Best source of Clarendon Hill information:

[Clarendonhill.org](https://clarendonhill.org)

Resident Info > Construction Updates



# How to stay informed

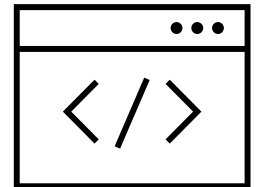
## Somerville City Alerts

Sign up for city alerts to receive notification of construction in your neighborhood, snow emergencies and more at [Somervillema.gov/alerts](https://Somervillema.gov/alerts).



## Project Website

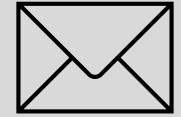
Visit our project website at [Somervillema.gov/intersectionredesign](https://Somervillema.gov/intersectionredesign) for construction updates, periodic progress reports, and previous community meeting presentations.



# How to Contact Us

For quickest response to construction-related questions:

[Construction@Somervillema.gov](mailto:Construction@Somervillema.gov)



**Jesse Moos, Construction Liaison**



[jmoos@somervillema.gov](mailto:jmoos@somervillema.gov)



617-981-2896



@SomervilleInfr1

**Rebecca Wright, Project Manager**



[rwright@somervillema.gov](mailto:rwright@somervillema.gov)

**Nick Alakel, Construction Public  
Information Officer**



[nalakel@somervillema.gov](mailto:nalakel@somervillema.gov)

Questions?