

MAYOR JOSEPH A. CURTATONE

STATE SENATOR PAT JEHLIN

STATE REPRESENTATIVE

MIKE CONNOLLY

CITY COUNCIL PRESIDENT &

WARD 1 COUNCILOR MATT

MCLAUGHLIN

CITY STAFF WELCOME YOU

**KENSINGTON
CONNECTOR
DIGITAL
COMMUNITY
MEETING #2**



City of Somerville, OSPCD

May 3, 2021



Pursuant to Governor Baker's March 12, 2020 Order suspending certain provisions of the Open Meeting Law, G.L. C. 30A, s. 18, and the Governor's March 15, 2020 Order imposing strict limitations on the number of people that may gather in one place, as well as Mayor Curtatone's Declaration of Emergency, dated March 15, 2020, this Community Meeting for the Kensington Connector will be conducted via remote participation. We will have a recording available as soon as possible after the meeting.



Kensington Connector
City of Somerville, OSPCD
May 3, 2021



Meeting Management:

This meeting will be recorded.

All Attendees will be muted during the presentation.

If you would like to ask a question, please hold them until the end of the meeting.

At the end of the meeting, please type your question into the chat box. The City Moderator will read each question & comment.



Kensington Connector
City of Somerville, OSPCD
May 3, 2021

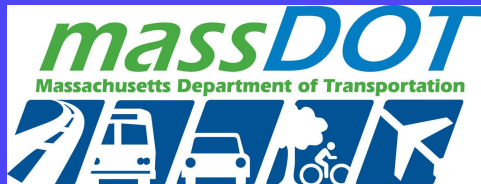


STATE SENATOR
PAT JEHLLEN

STATE REPRESENTATIVE
MIKE CONNOLLY

CITY COUNCIL PRESIDENT
& WARD 1 COUNCILOR
MATT MCLAUGHLIN

ELECTED OFFICIALS INTRODUCTION



Kensington Connector
City of Somerville, OSPCD
May 3, 2021



ARCHITECTURAL CONSULTANT -
OVERUNDER - RAMI el SAMAHY & EM PETRO

SOMERVILLE PUBLIC SPACE &
URBAN FORESTRY -
SR. PLANNER CORTNEY KIRK

MASS DOT HIGHWAY DIVISION DISTRICT 4 -
DEPUTY DIRECTOR FRANK SUSZYNSKI

SOMERVILLE MOBILITY -
**DIRECTOR BRAD RAWSON &
PLANNER ALI KLEYMAN**

SR.

STAFF & CONSULTANT INTRODUCTION



**Kensington Connector
City of Somerville, OSPCD
May 3, 2021**



KENSINGTON

~~UNDERPASS~~

CONNECTOR



AGENDA

- **Kensington Connector Rapid Project Update - CORTNEY KIRK**
- **Kensington Connector Big Idea Concepts - OVER/UNDER - RAMI el SAMAHY**
- **Vote on Concept, Question, Answer & Feedback - ATTENDEES & TEAM**
- Update City and MassDOT adjacent work - ALI KLEYMAN
- Question, Answer & Feedback - ATTENDEES & TEAM



AGENDA

- Kensington Connector Rapid Project Update - CORTNEY KIRK
- Kensington Connector Big Idea Concepts - OVER/UNDER - RAMI el SAMAHY
- Vote on Concept, Question, Answer & Feedback - ATTENDEES & TEAM
- **Update City and MassDOT adjacent work - ALI KLEYMAN**
- **Question, Answer & Feedback - ATTENDEES & TEAM**



Rapid Project Update: Kensington Connector

Cortney Kirk - Public
Space & Urban Forestry



UNDER I93 PROJECT TIMELINE – *subject to change*

Community Meeting #2

May 3, 2021

FINAL PROJECT COST ESTIMATE

Spring / Summer 2021

FINAL PROJECT CONSTRUCTION

TBD

RAPID PROJECT

May 2021

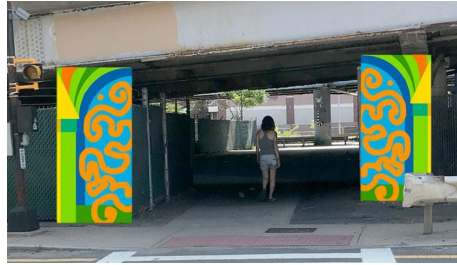
FINAL PROJECT TECHNICAL DRAWINGS

TBD



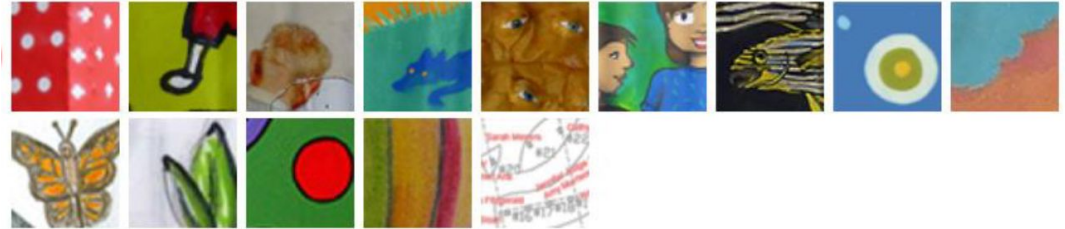
Rapid Project - installation mid-May 2021

THIS IS EAST UPDATE - Vinyl fence
scrim with several new portraits by Meagan
O'Brien with East Somerville Main Streets



EAST SOMERVILLE WAYFINDING -

Mural paintings by Liz LaManche with East
Somerville Main Streets



UNDER HIGHWAY PAINTINGS -

Existing paintings on canvas attached to
fencing curated by Mark Chase and East
Somerville Main Streets



Rapid Project – installation mid-May 2021

THIS IS EAST UPDATE - Vinyl fence
scrim with several new portraits by Meagan
O'Brien with East Somerville Main Streets

EAST SOMERVILLE WAYFINDING -
Mural paintings by Liz LaManche with East
Somerville Main Streets

UNDER HIGHWAY PAINTINGS -
Existing paintings on canvas attached to
fencing curated by Mark Chase and East
Somerville Main Streets



Rapid Project – installation mid-May 2021

THIS IS EAST UPDATE:

Five new portraits by Meagan O'Brien

- Cheryl Richards
- Daniel Bojorquez
- Tracey Pratt
- Lorenzo Reyes
- Ekaterina Hicks



Rapid Project - installation mid-May 2021

THIS IS EAST UPDATE - Vinyl fence scrim with several new portraits by Meagan O'Brien with East Somerville Main Streets

EAST SOMERVILLE WAYFINDING - Mural paintings by Liz LaManche with East Somerville Main Streets

UNDER HIGHWAY PAINTINGS - Existing paintings on canvas attached to fencing curated by Mark Chase and East Somerville Main Streets



Rapid Project - installation mid-May 2021

THIS IS EAST UPDATE - Vinyl fence
scrim with several new portraits by Meagan
O'Brien with East Somerville Main Streets

EAST SOMERVILLE WAYFINDING -
Mural paintings by Liz LaManche with East
Somerville Main Streets

UNDER HIGHWAY PAINTINGS -
Existing paintings on canvas attached to
fencing curated by Mark Chase and East
Somerville Main Streets



**BIG IDEA
CONCEPTS:
Kensington
Connector**

**Rami el Samahy & Em
Petro - Over / Under**

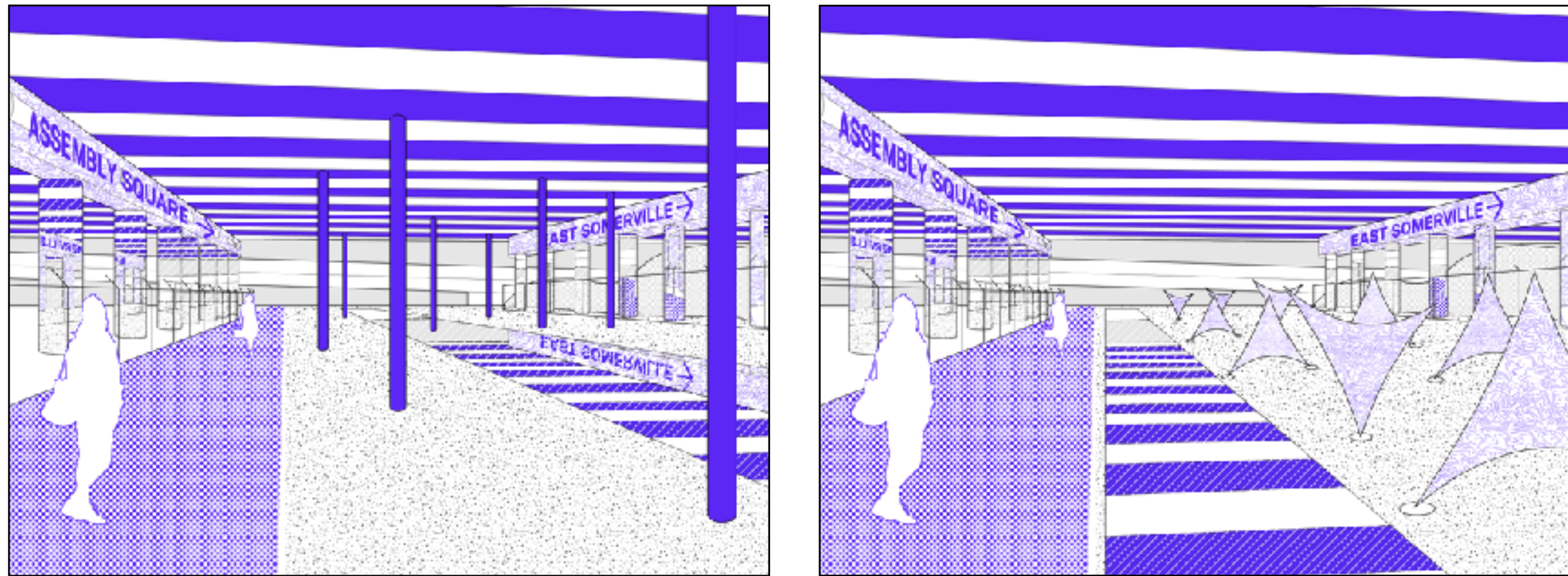
Kensington Connector

Digital Community Meeting #2

3 May 2021

 OverUnder

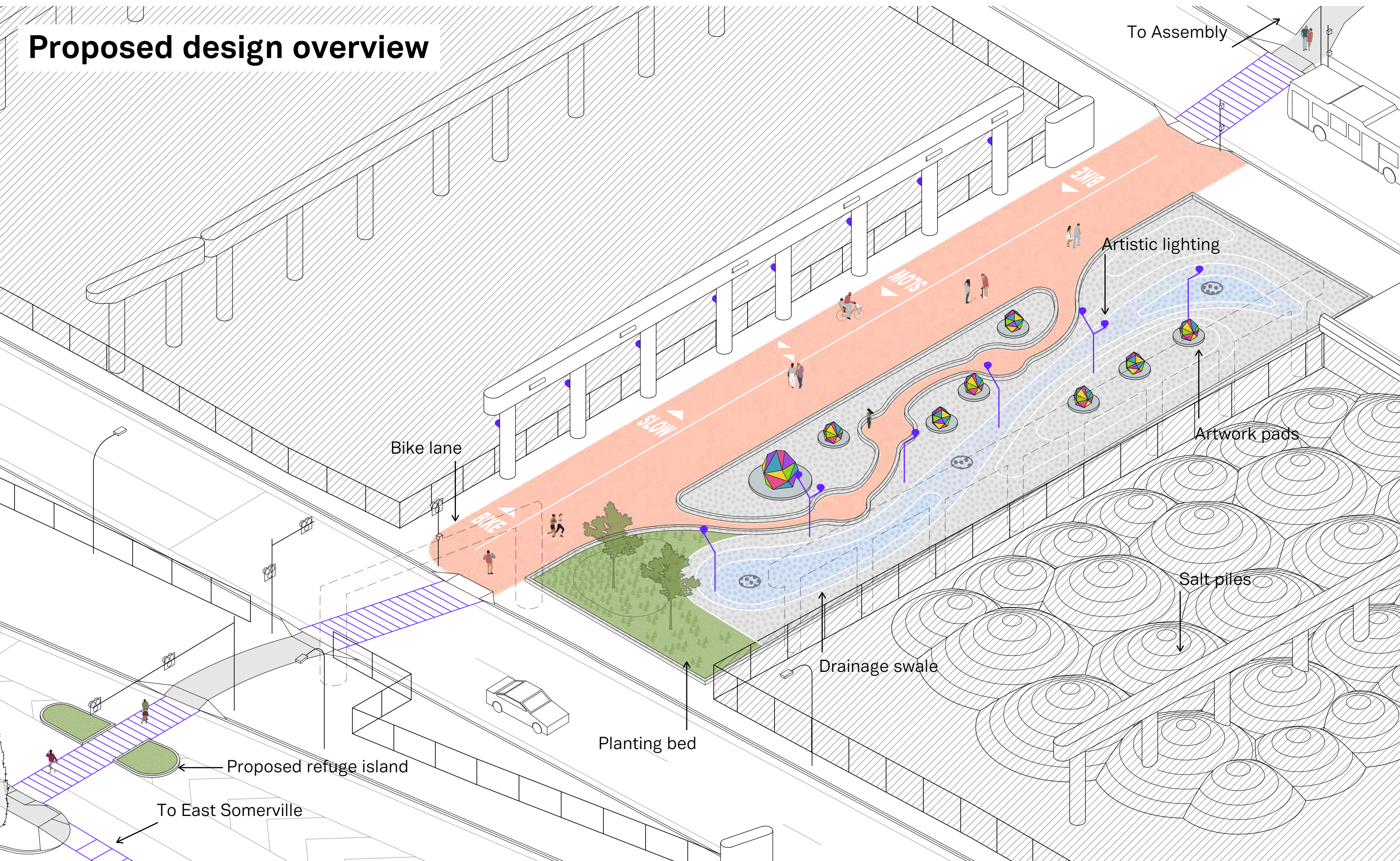
Initial Concept Design Scheme (presented August 28 2020)



Feedback and Community Priorities

- Improve pedestrian safety with traffic signals and refuge islands at crossings
- Include artwork (e.g. murals or sculpture)
- Explore artistic lighting
- Explore shade loving vegetation
- Improve drainage for stormwater runoff

Proposed design overview



To Assembly

Bike lane

Artistic lighting

Artwork pads

Salt piles

Drainage swale

Planting bed

Proposed refuge island

To East Somerville

BIKE

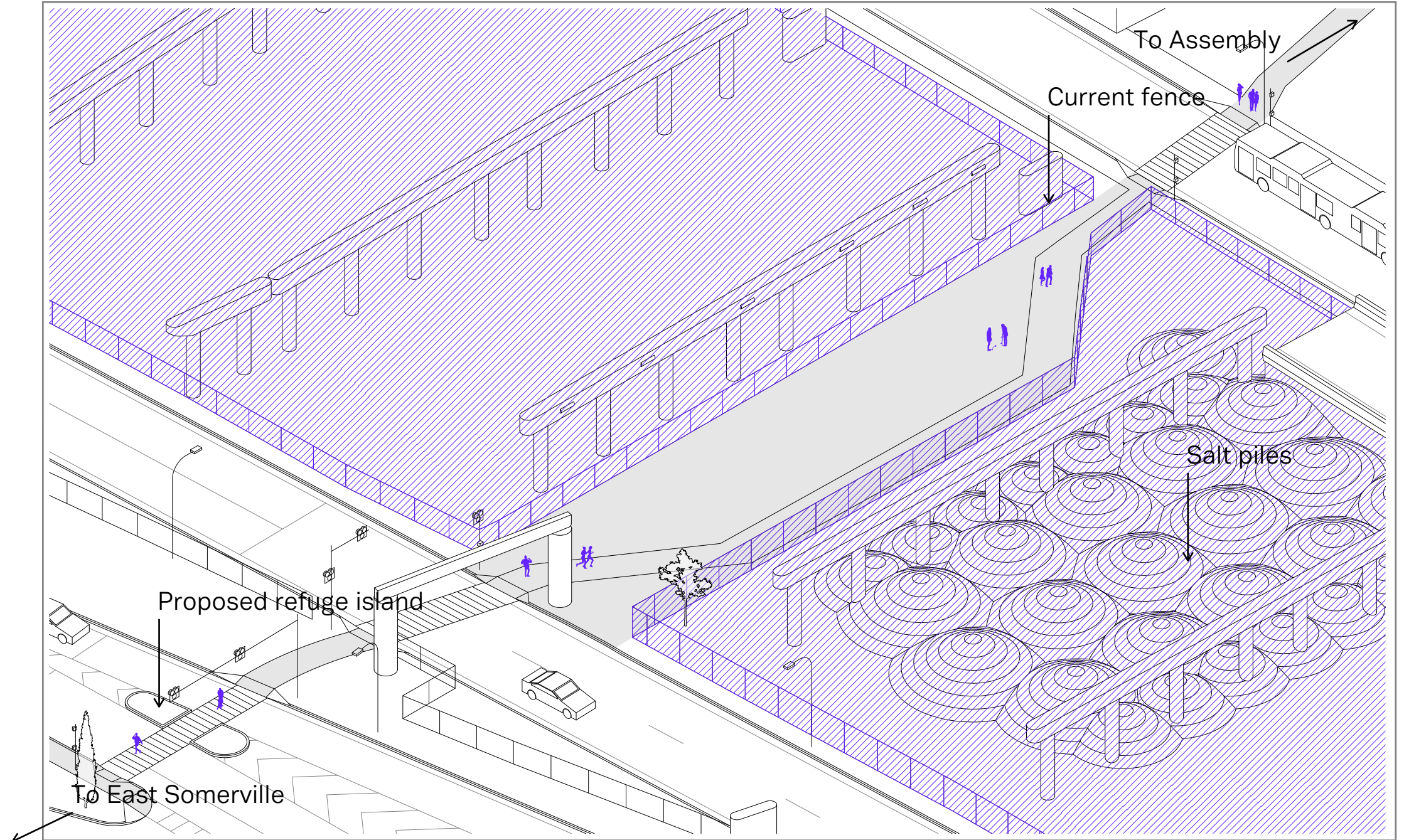
MOTS

SLOW

BIKE

1. Relocate fencing

The current fencing at the Kensington Connector constricts the space and limits critical visibility between drivers and pedestrians.

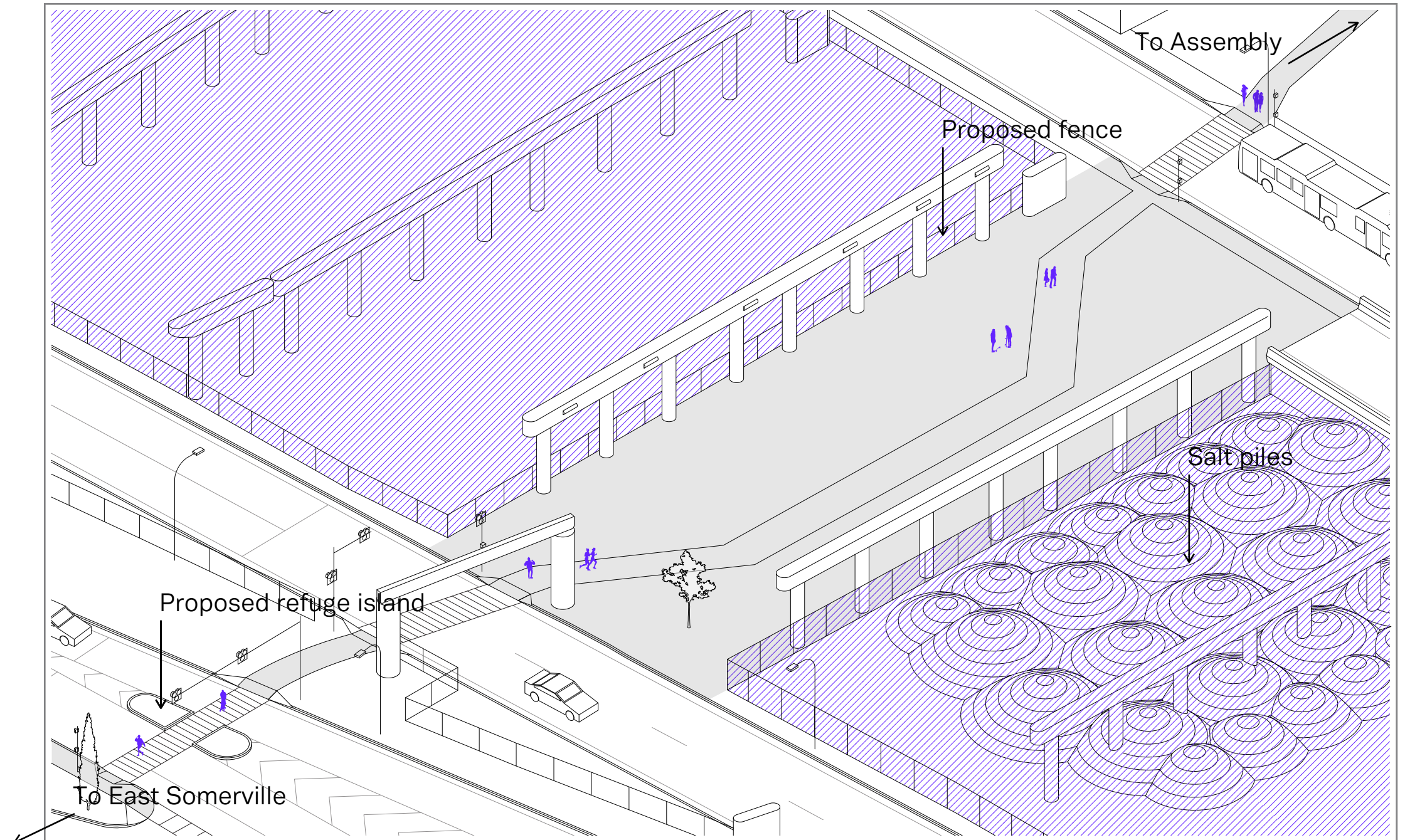


Current fence extents

1. Relocate fencing

The current fencing at the Kensington Connector constricts the space and limits critical visibility between drivers and pedestrians.

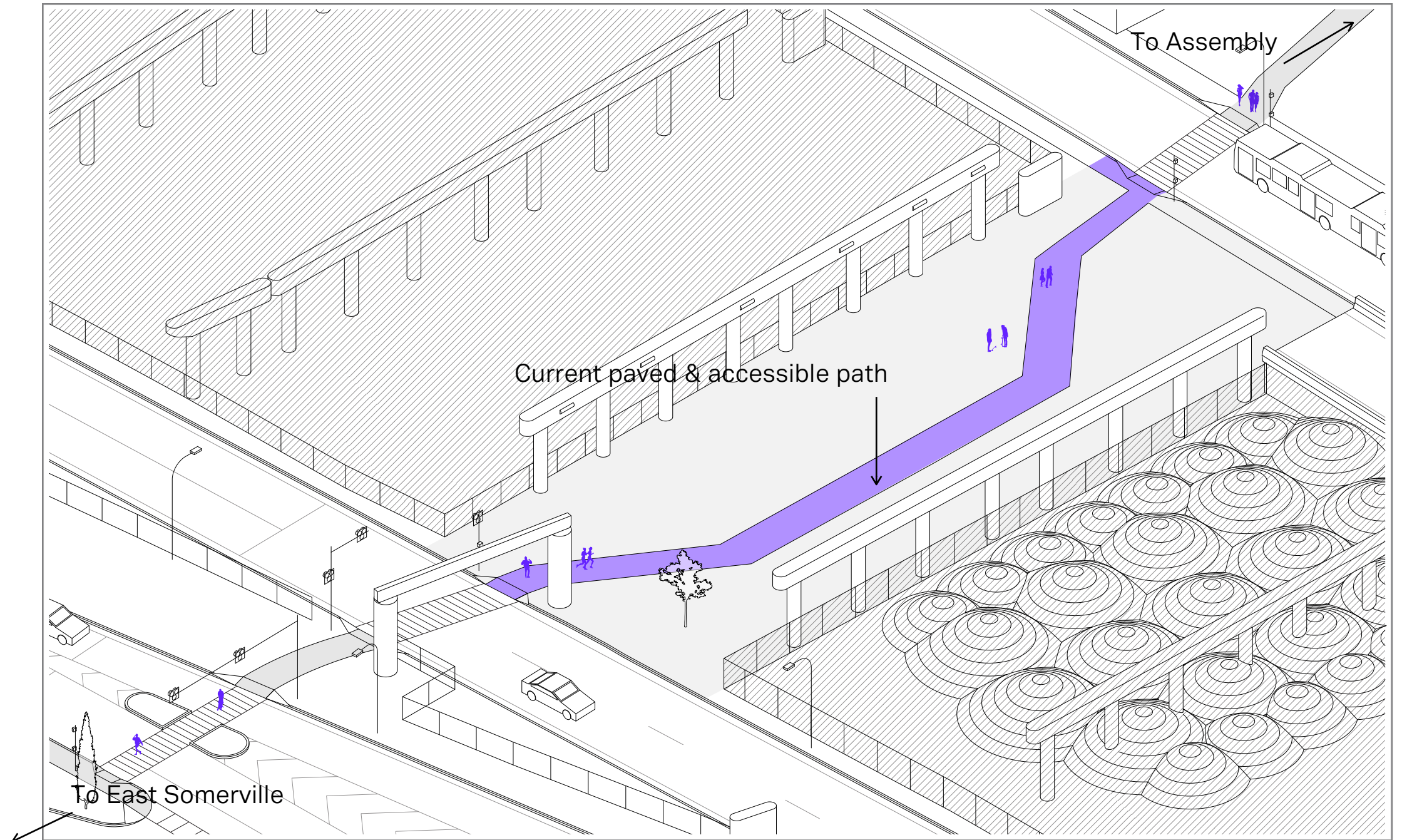
The proposed fencing is relocated to directly behind the piers on either side of the Connector, creating a “room” between the two most prominent structures in the space. This would also require a slight relocation of some of the salt piles behind the southern fence.



Proposed fence extents

2. Relocate path of travel

The current paved and accessible path of travel makes many unnecessary bends and kinks through the Connector.

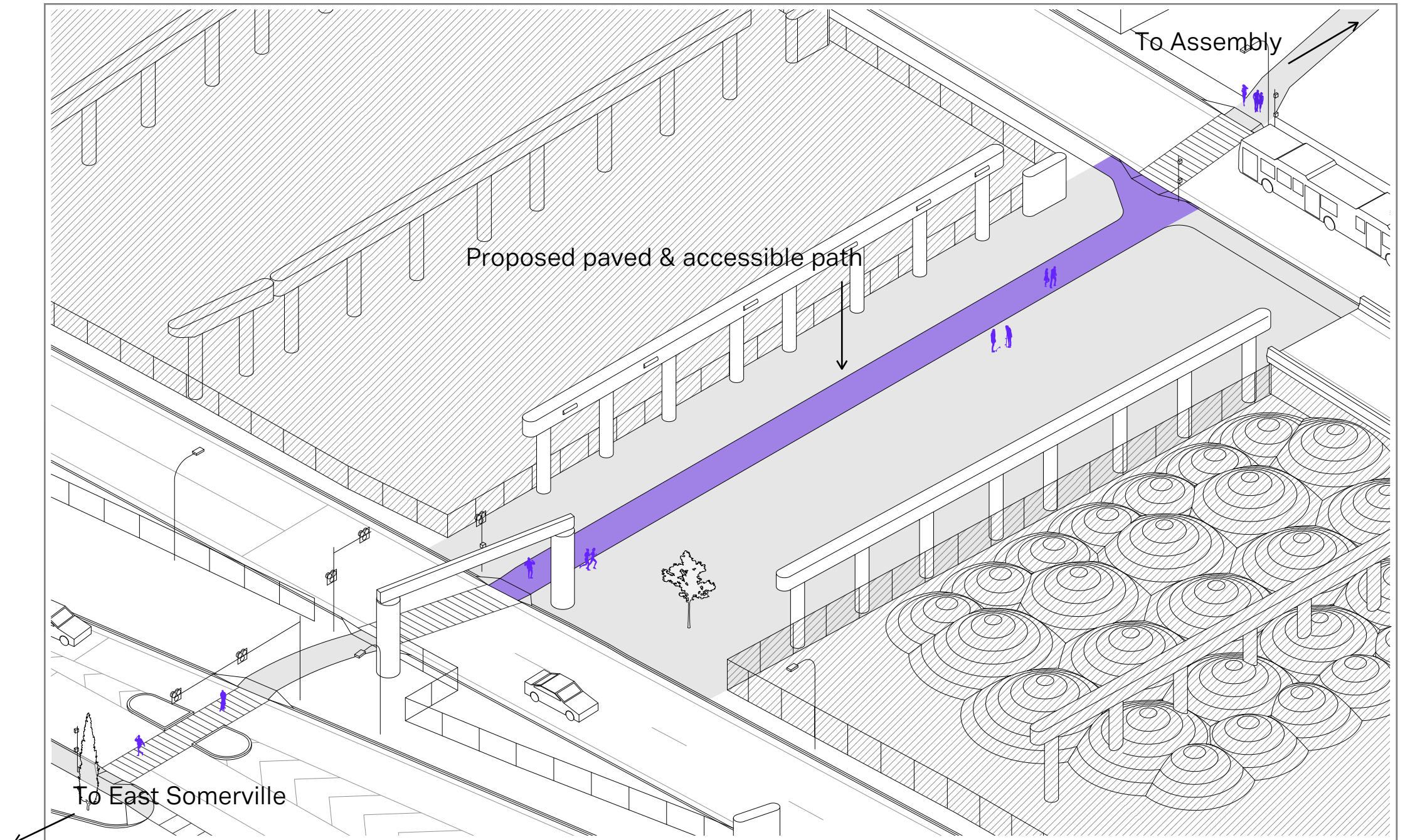


Current path of travel

2. Relocate path of travel

The current paved and accessible path of travel makes many unnecessary bends and kinks through the Connector.

The proposed path is straightened out, granting an accessible path of travel at the most direct route through the Connector.



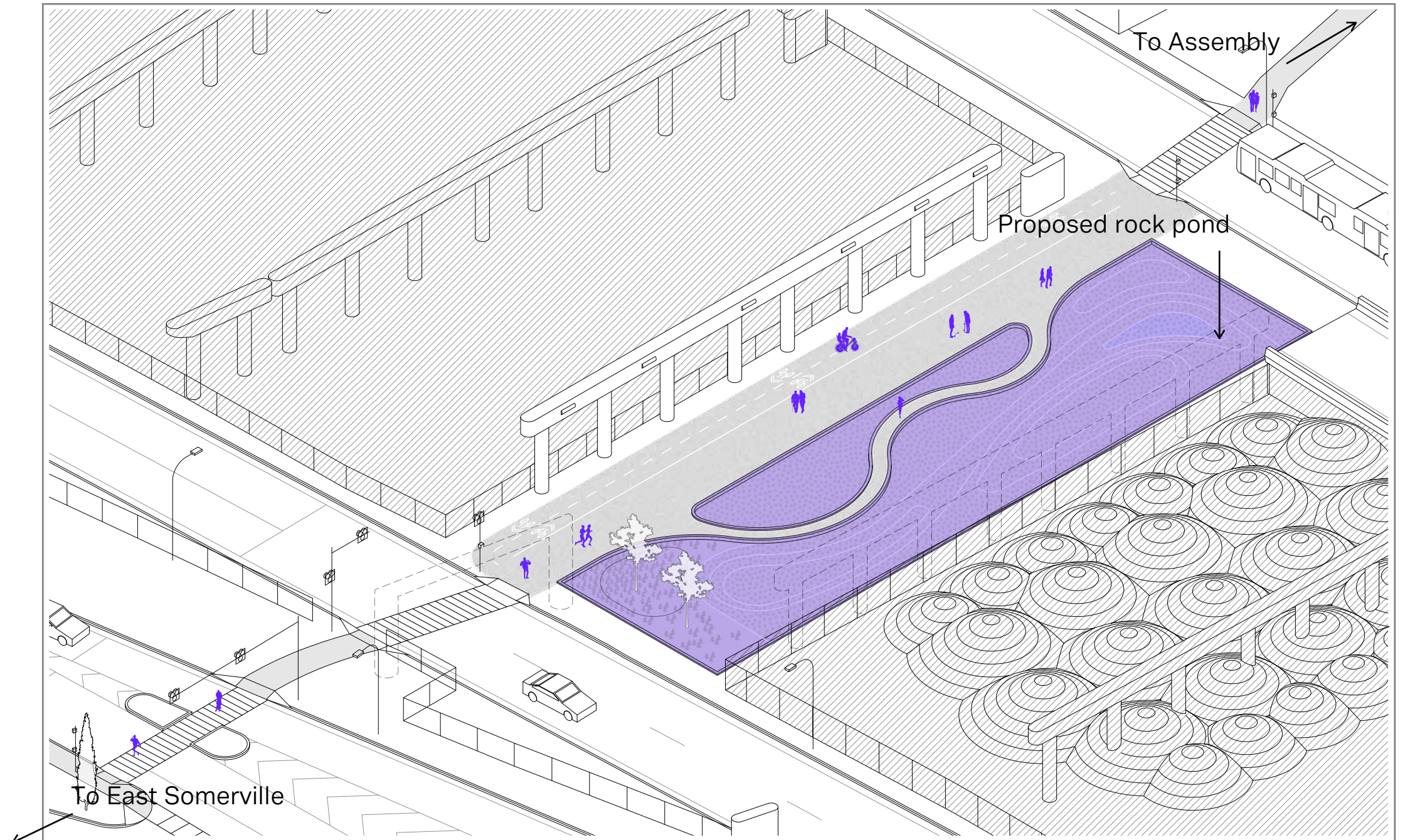
Proposed path of travel

3. Rock pond site design

The proposed design incorporates a landscaped rock pond running alongside the path of travel, filling the space between the path and the southern fence.



Underground at Ink Block drainage swale



Proposed rock pond site design

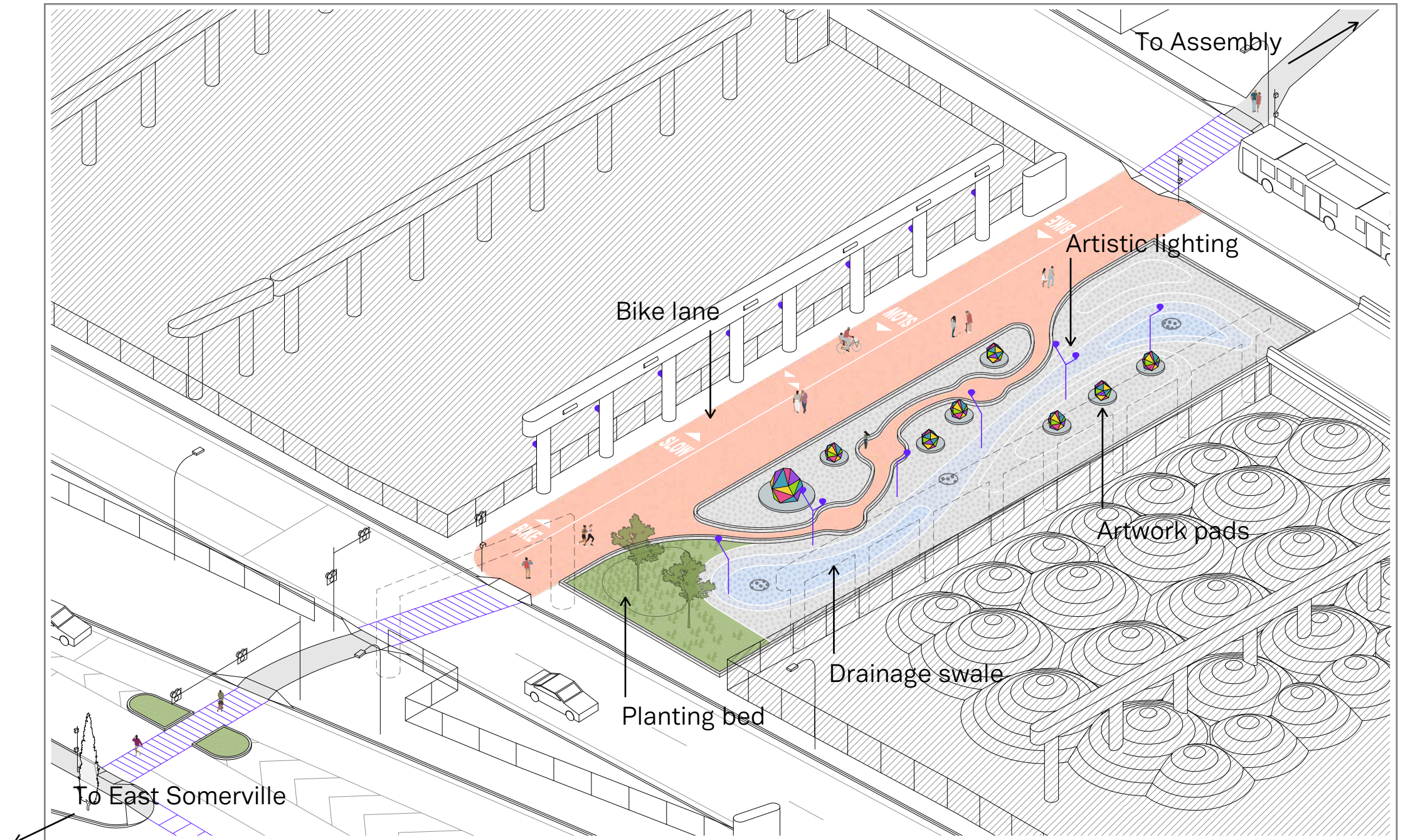
3. Rock pond site design

The proposed design incorporates a landscaped rock pond running alongside the path of travel, filling the space between the path and the southern fence.

The rock pond configuration includes a **drainage swale** to ease stormwater accumulation, **artwork pads** for rotating public art, **artistic lighting** illuminating the underside of the highway, a **planting bed** with low succulent cover, and a two-way **bike lane** on the opposite (north) side of the path of travel.

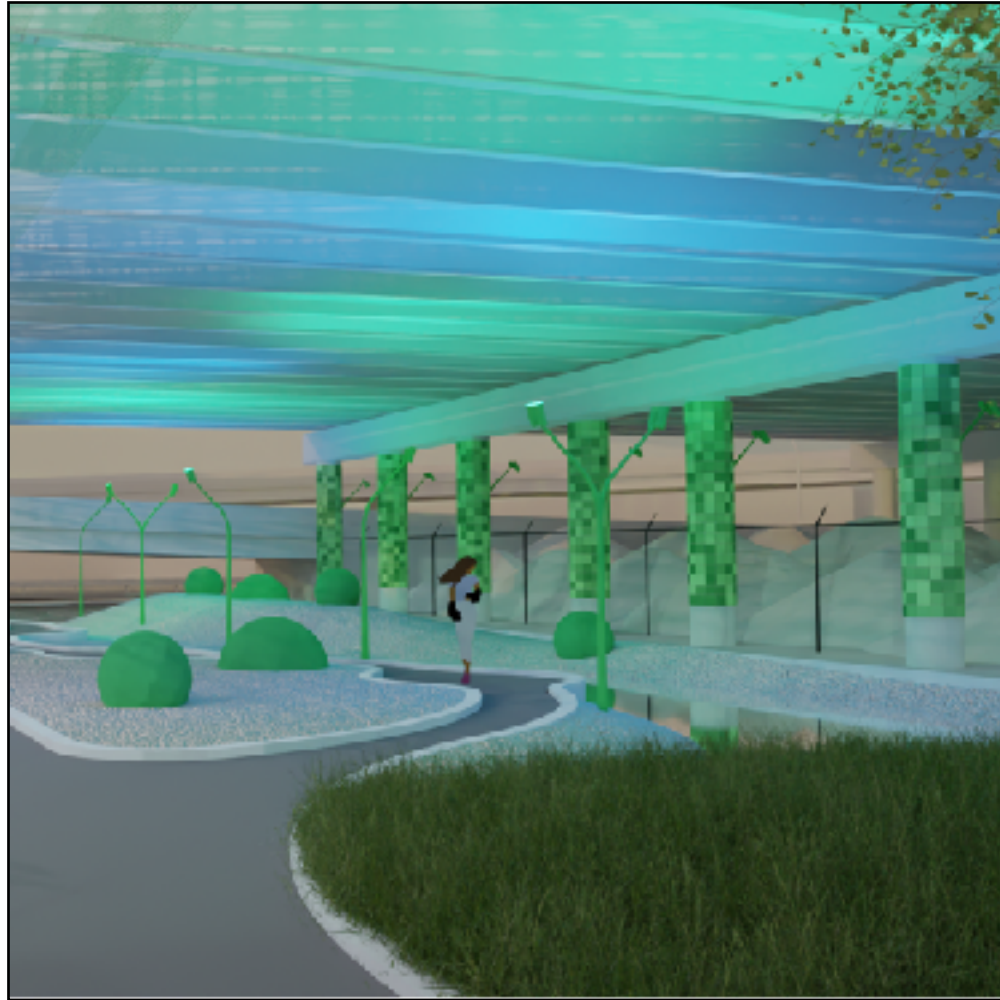


Underground at Ink Block drainage swale

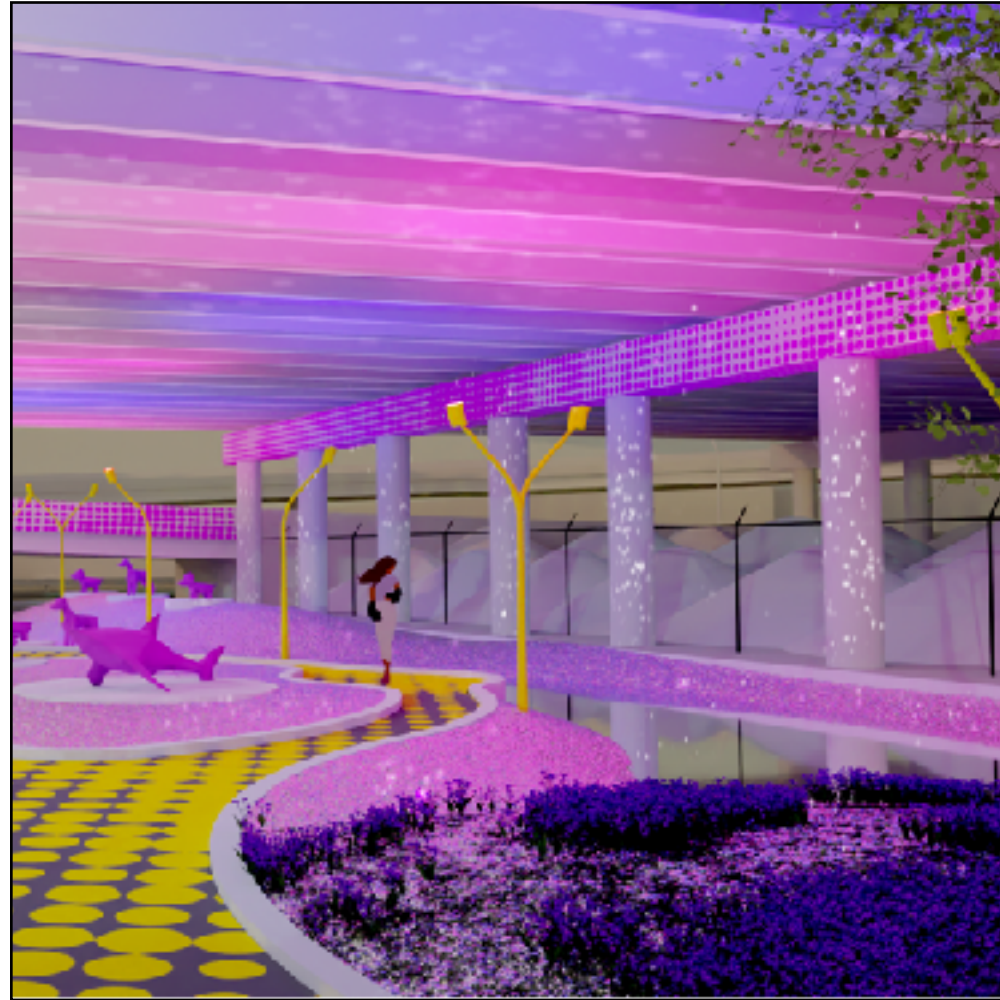


Proposed rock pond site design

Design Options



Option 1 **Jungle**

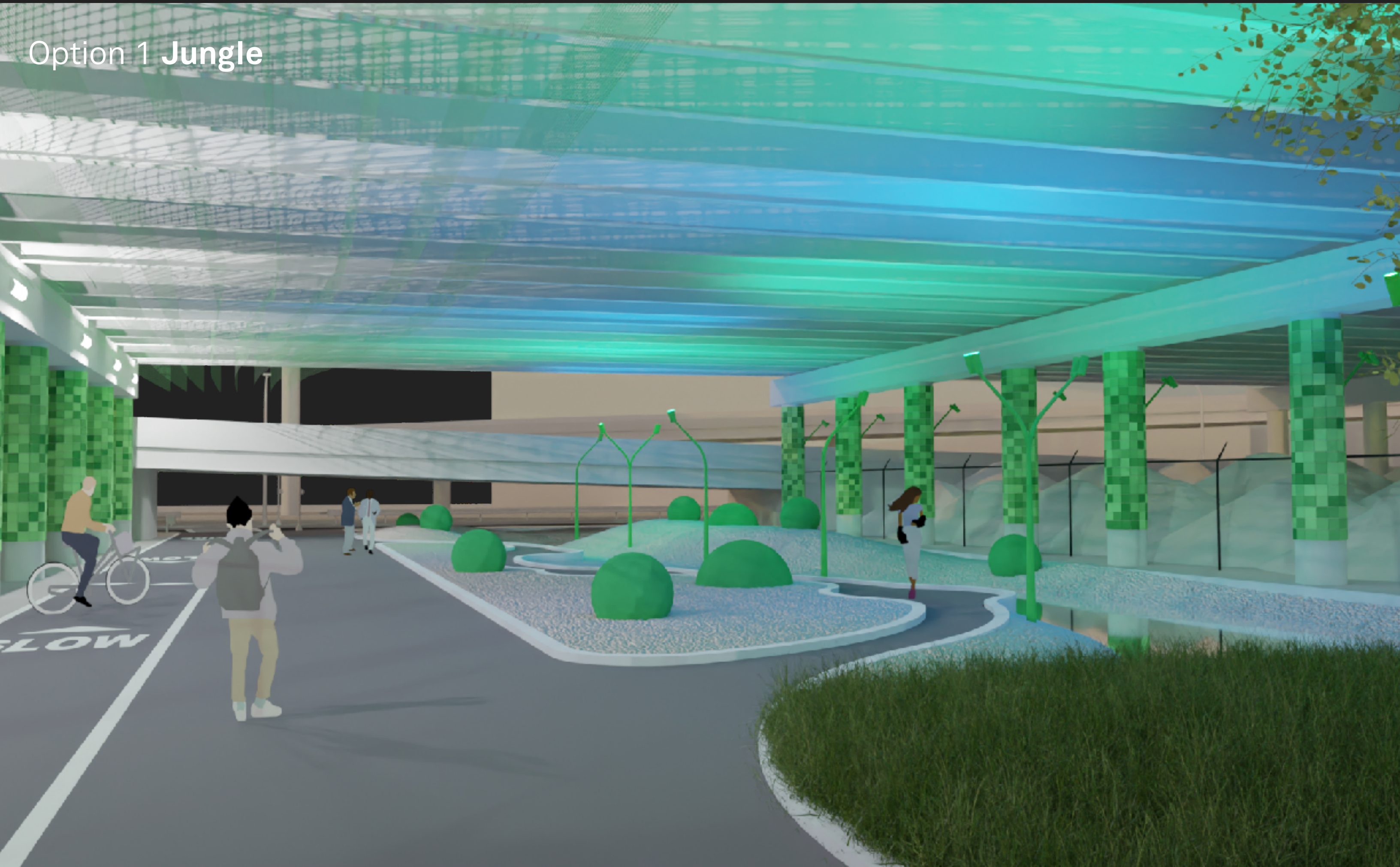


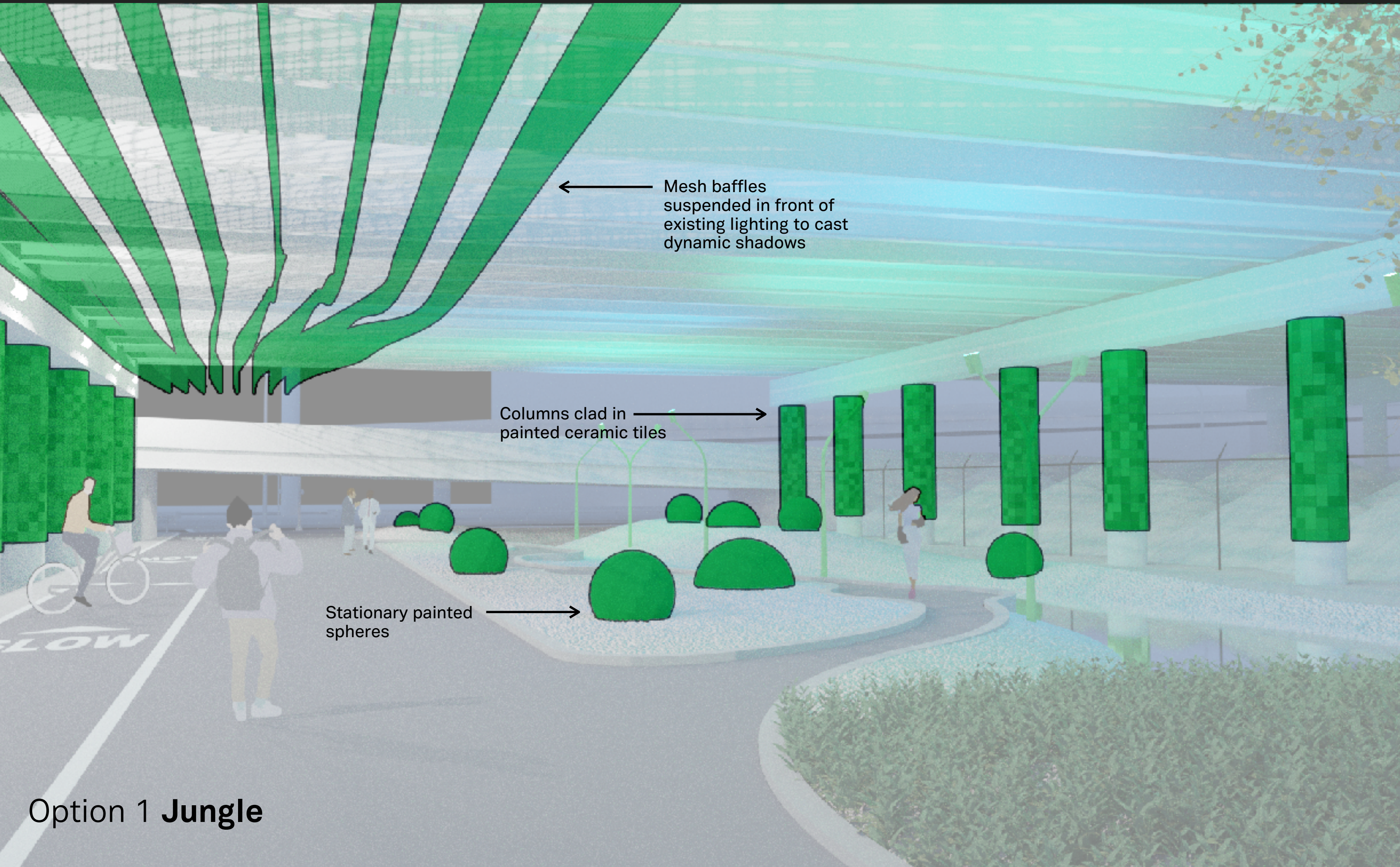
Option 2 **Disco**



Option 3 **Natural**

Option 1 Jungle





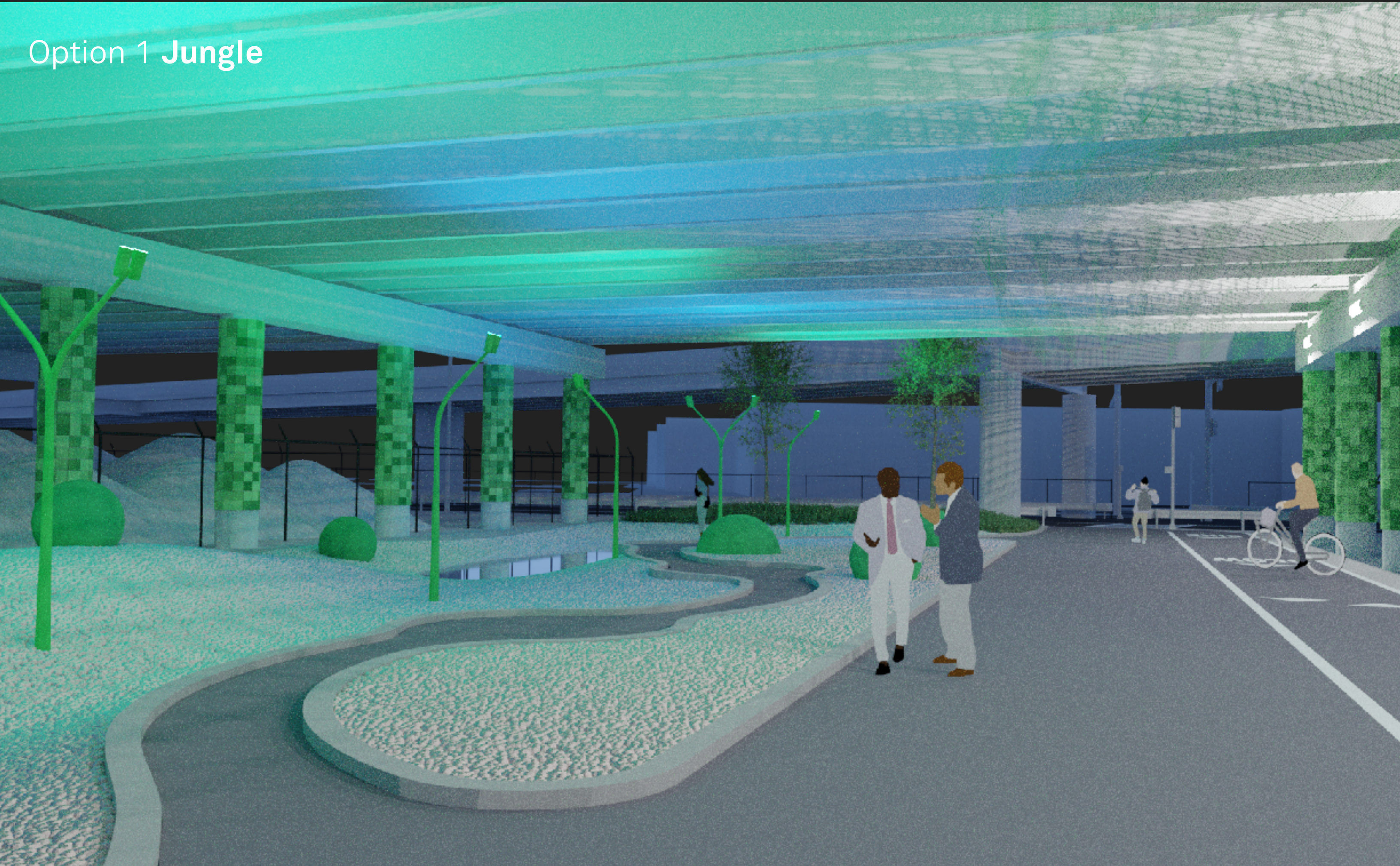
← Mesh baffles
suspended in front of
existing lighting to cast
dynamic shadows

Columns clad in
painted ceramic tiles →

Stationary painted
spheres →

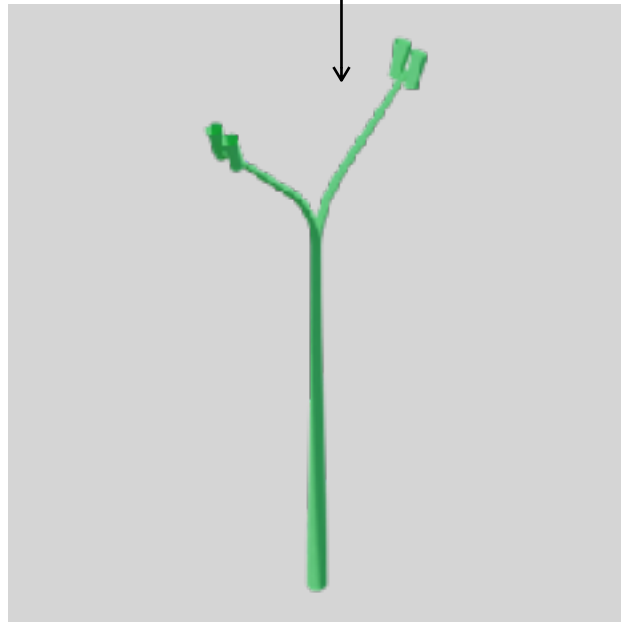
Option 1 **Jungle**

Option 1 Jungle



Option 1 Jungle

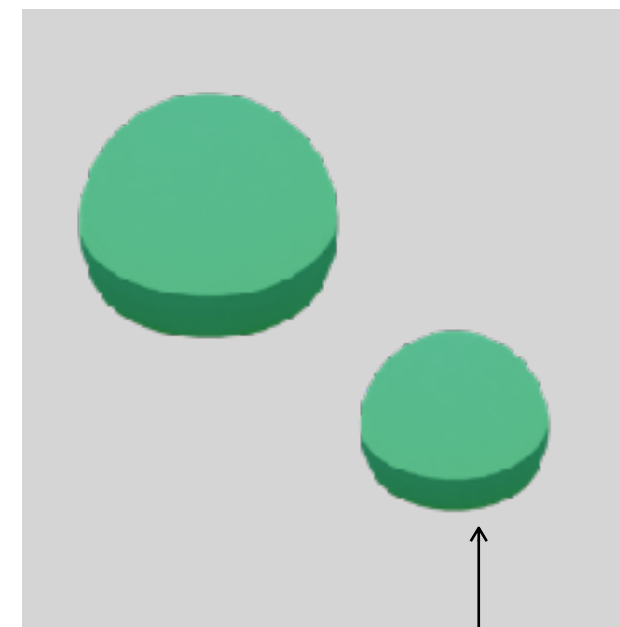
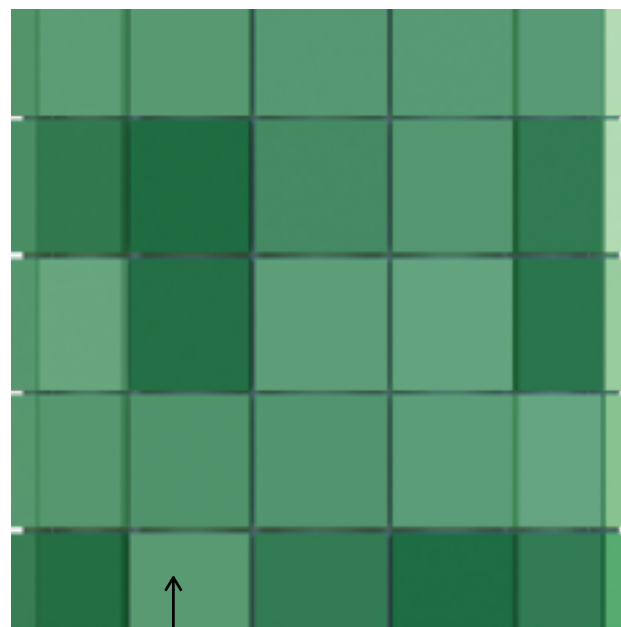
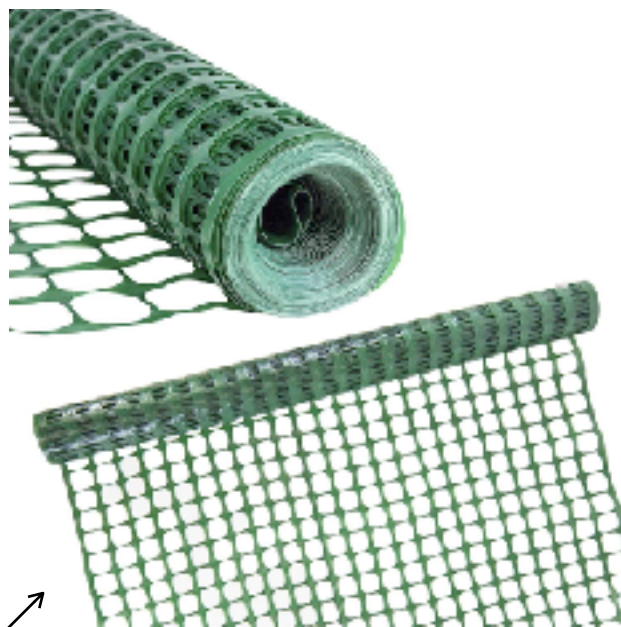
Brightly painted artistic lighting fixtures



White river rock



Tall grasses

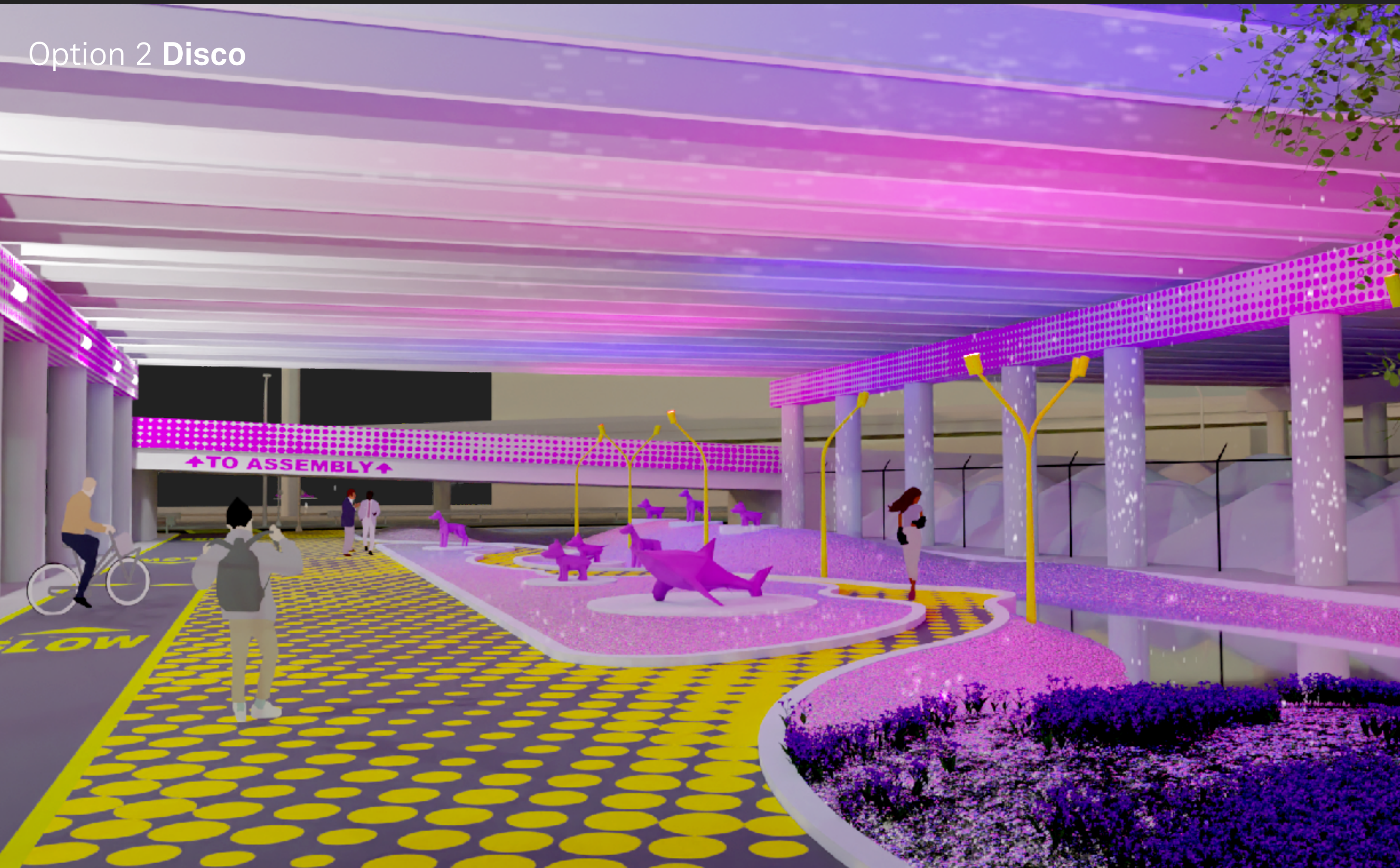


Mesh baffles suspended in front of existing lighting to cast dynamic shadows

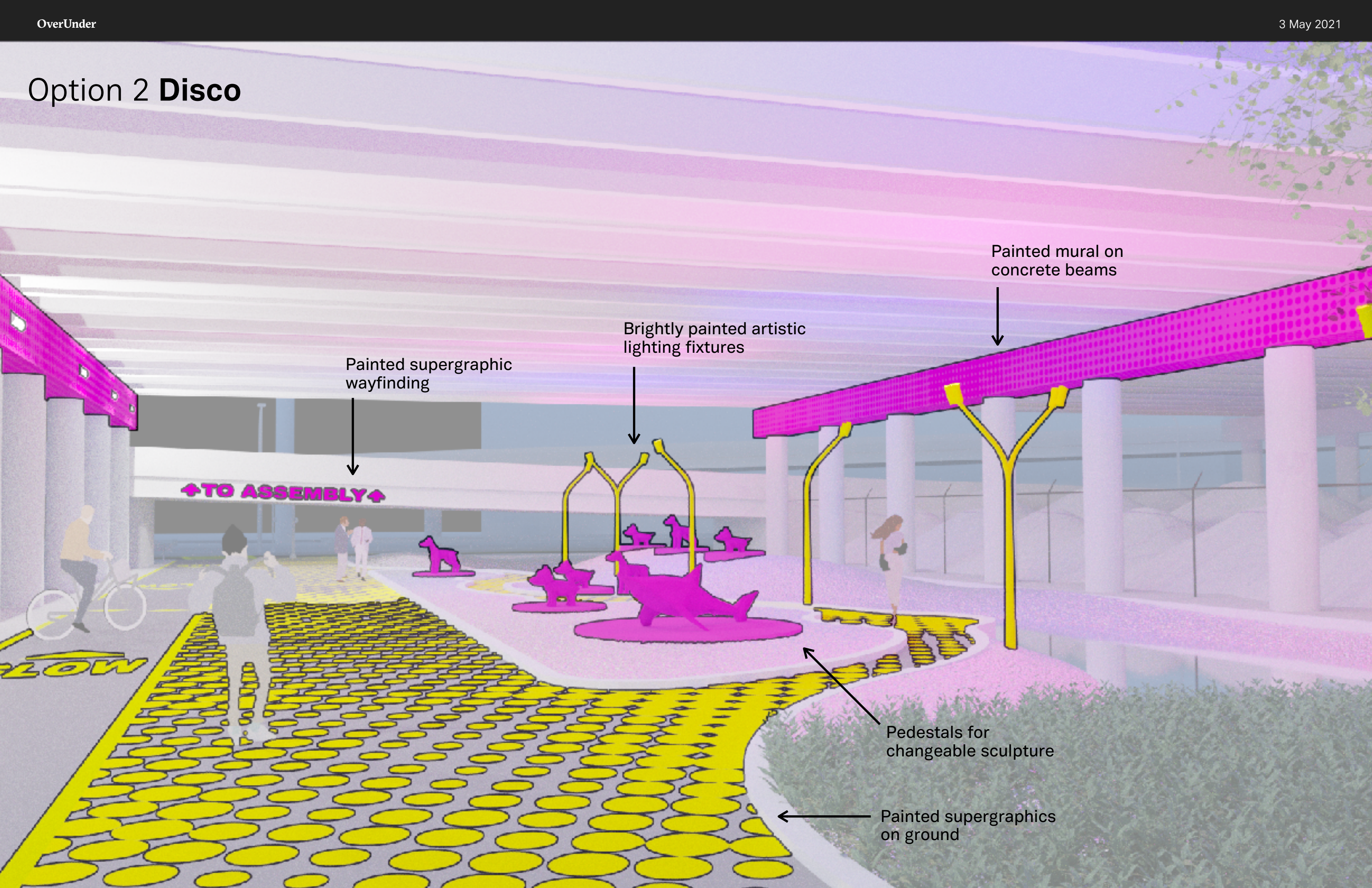
Columns clad in painted ceramic tiles

Stationary painted spheres

Option 2 Disco



Option 2 Disco



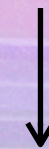
Painted supergraphic wayfinding



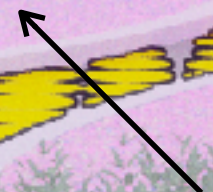
Brightly painted artistic lighting fixtures



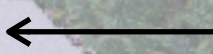
Painted mural on concrete beams



Pedestals for changeable sculpture



Painted supergraphics on ground



TO ASSEMBLY

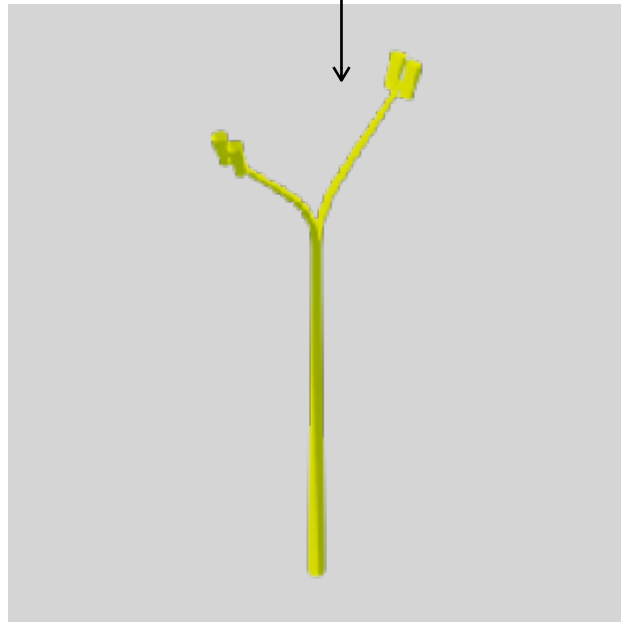
FLOW

Option 2 Disco



Option 2 **Disco**

Brightly painted artistic lighting fixtures

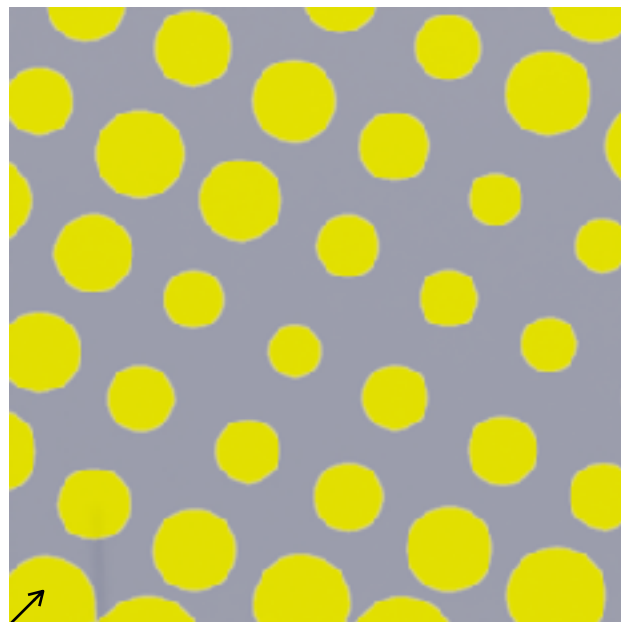


Metallic painted river rock

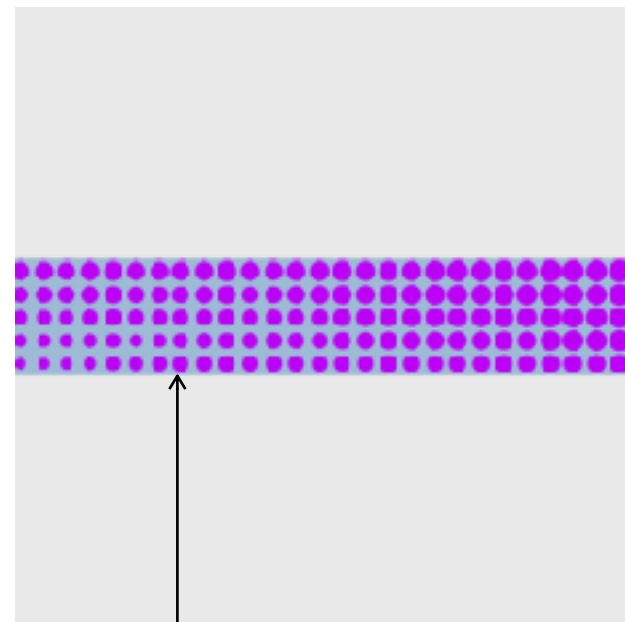


← Aster flower

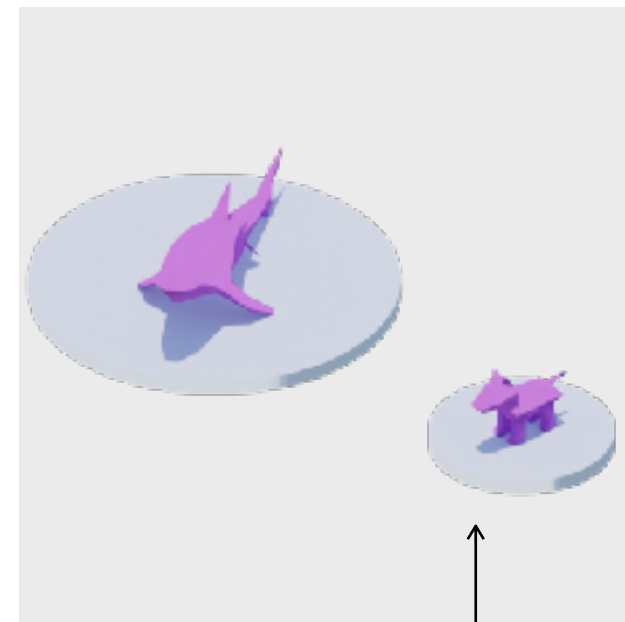
Painted supergraphics on ground



Painted mural on concrete beams



Pedestals for changeable sculptures



Option 3 Natural





↑
Painted existing beams

↑
Suspended sculpture

↑
Artistic lighting
illuminating salt piles

Option 3 **Natural**

Option 3 Natural



Option 2 Natural

Neutral artistic lighting fixtures



Natural river rock



Succulent ground cover

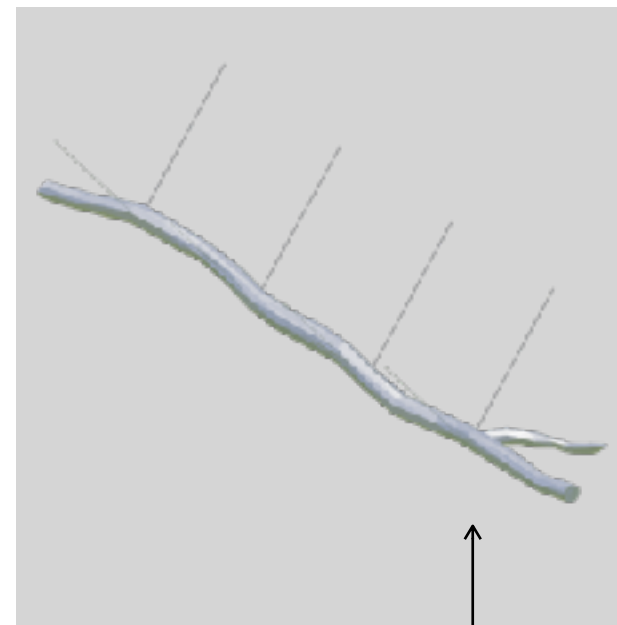


Artistic lighting illuminating salt piles

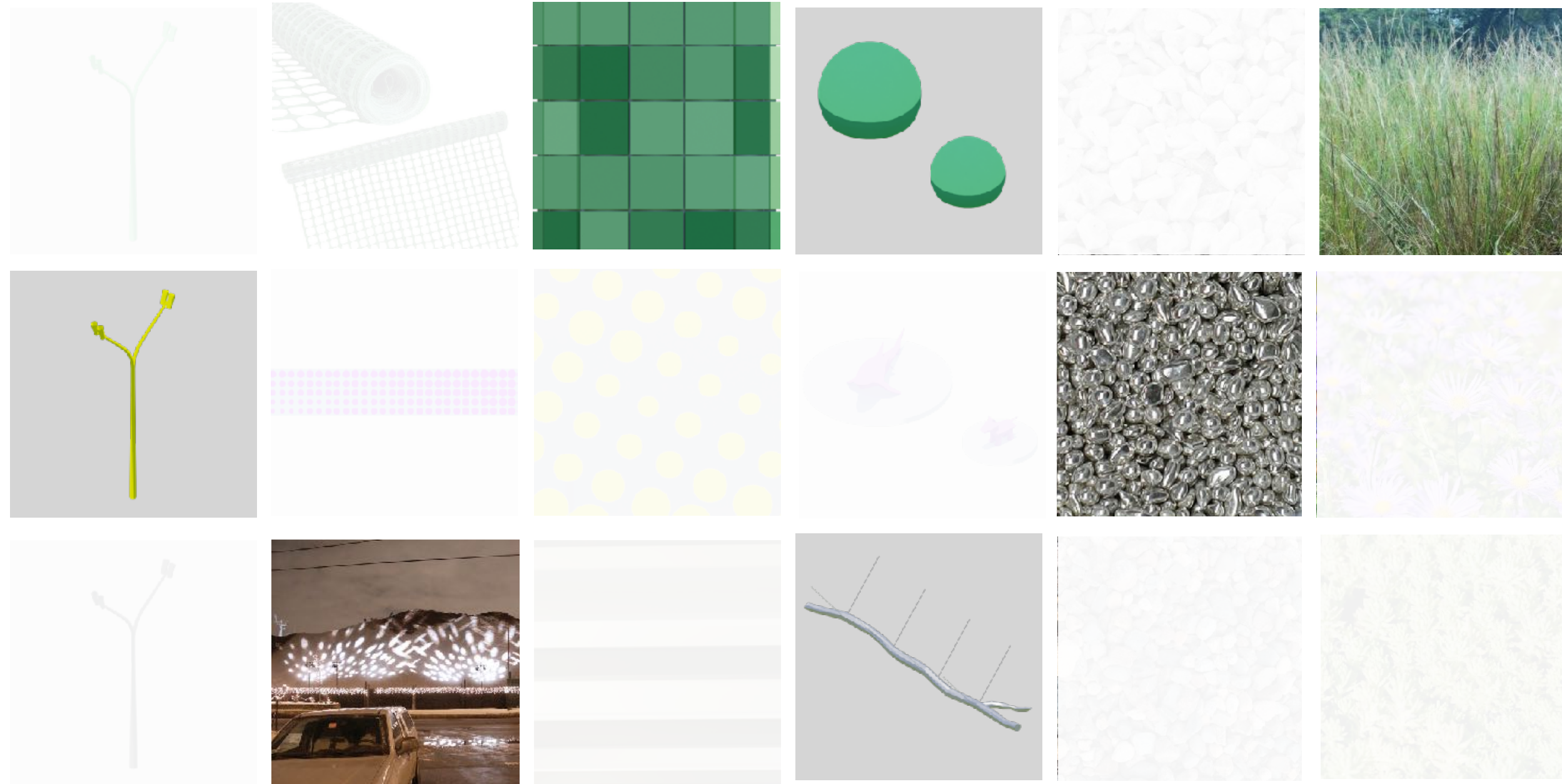
Image of salt projections by Landing Studio in Chelsea, MA, 2005



Painted existing beams



Suspended sculpture

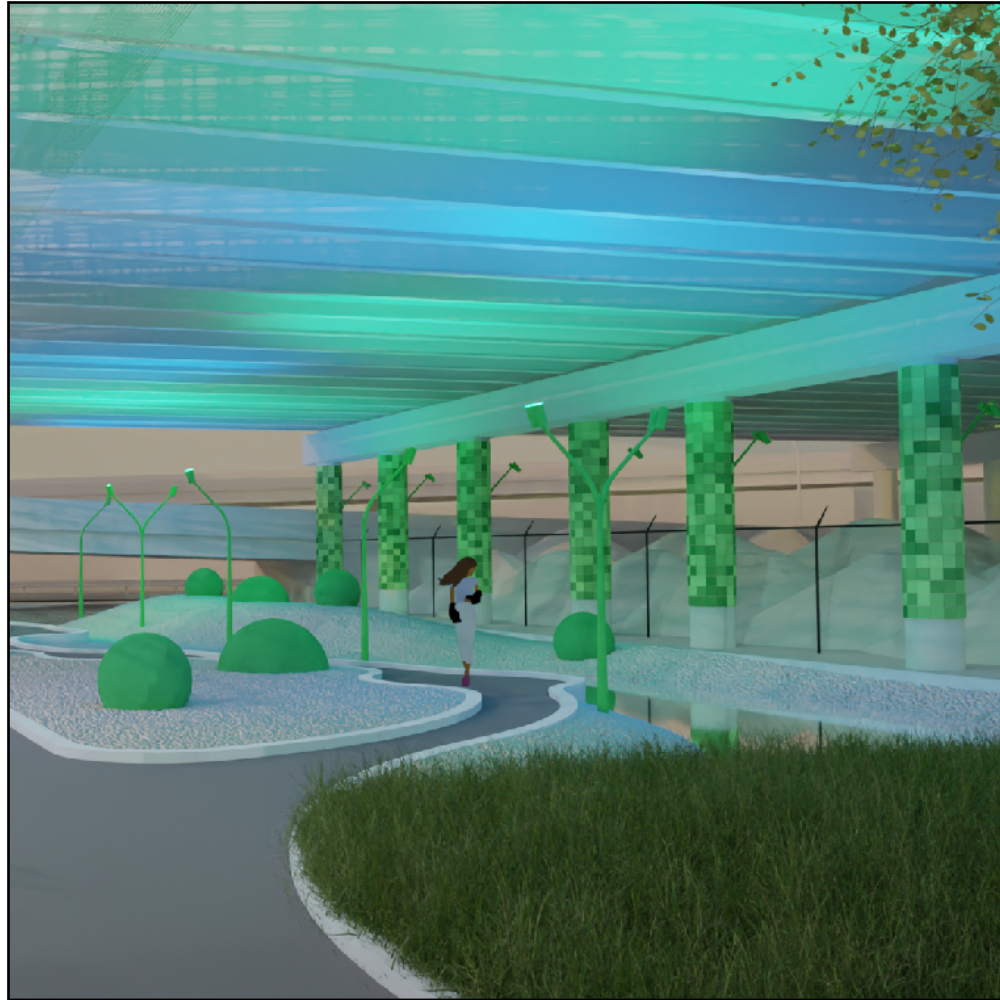


Although presented as three distinct options, further options could be explored by mixing and matching components, using a kit-of-parts approach.



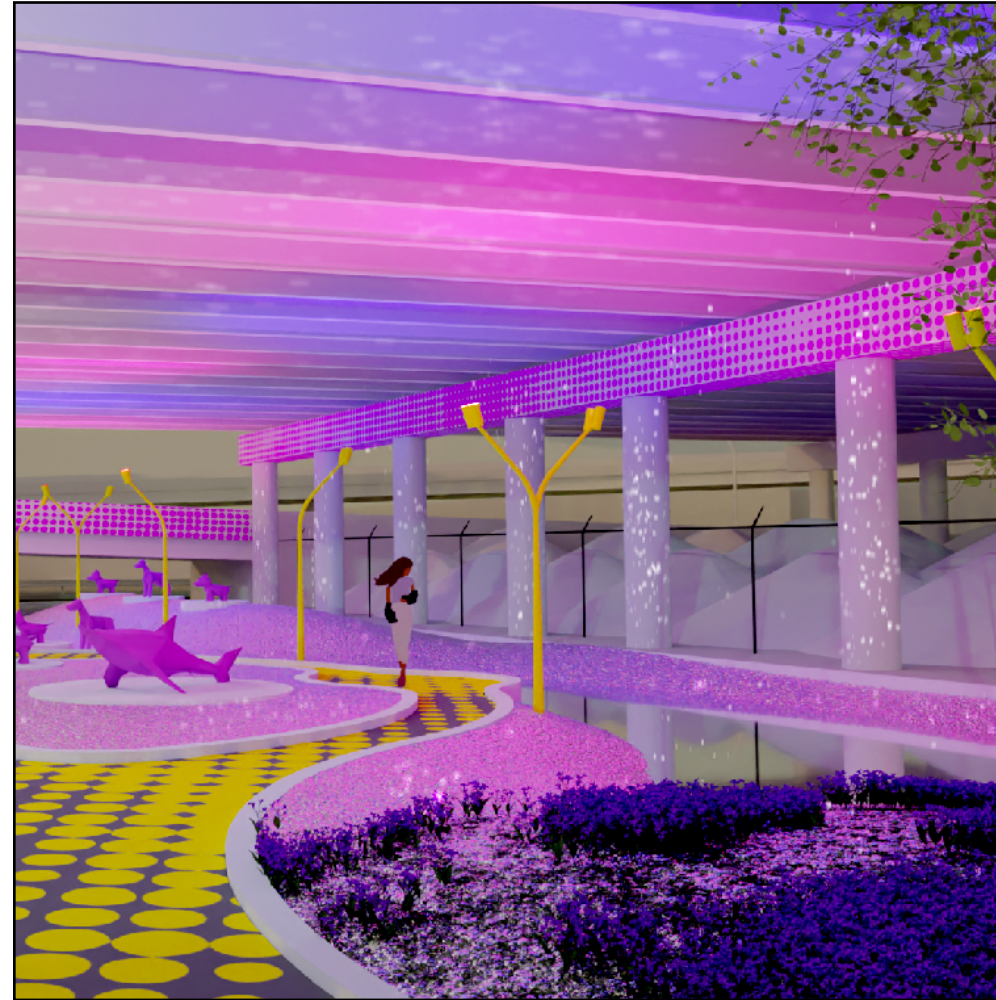
Although presented as three distinct options, further options could be explored by mixing and matching components, using a kit-of-parts approach.

Design Options Summary



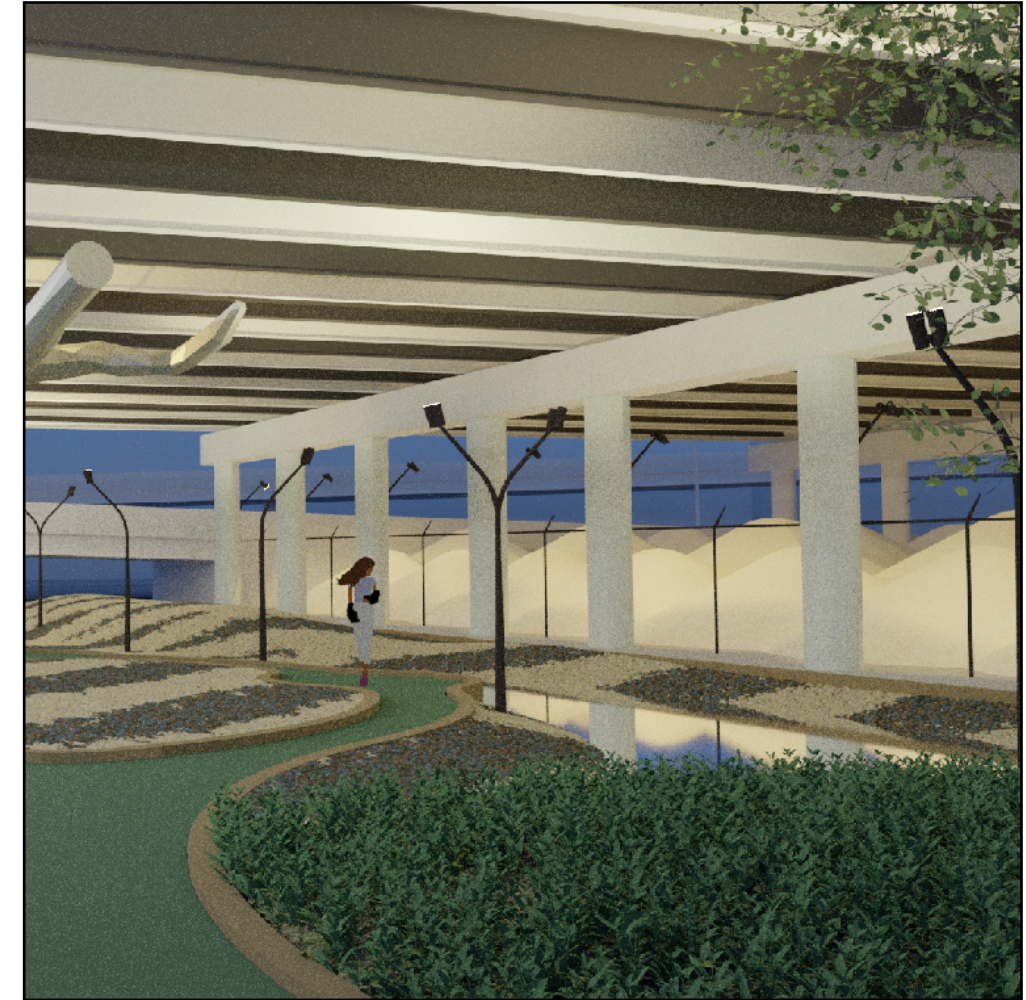
Option 1 **Jungle**

- Rock pond with painted spheres
- Ceramic tiles on columns
- Mesh baffles on existing lighting



Option 2 **Disco**

- Rock pond with pedestals for sculpture
- Painted supergraphics on beams and ground
- Artificially reflective rocks in rock pond



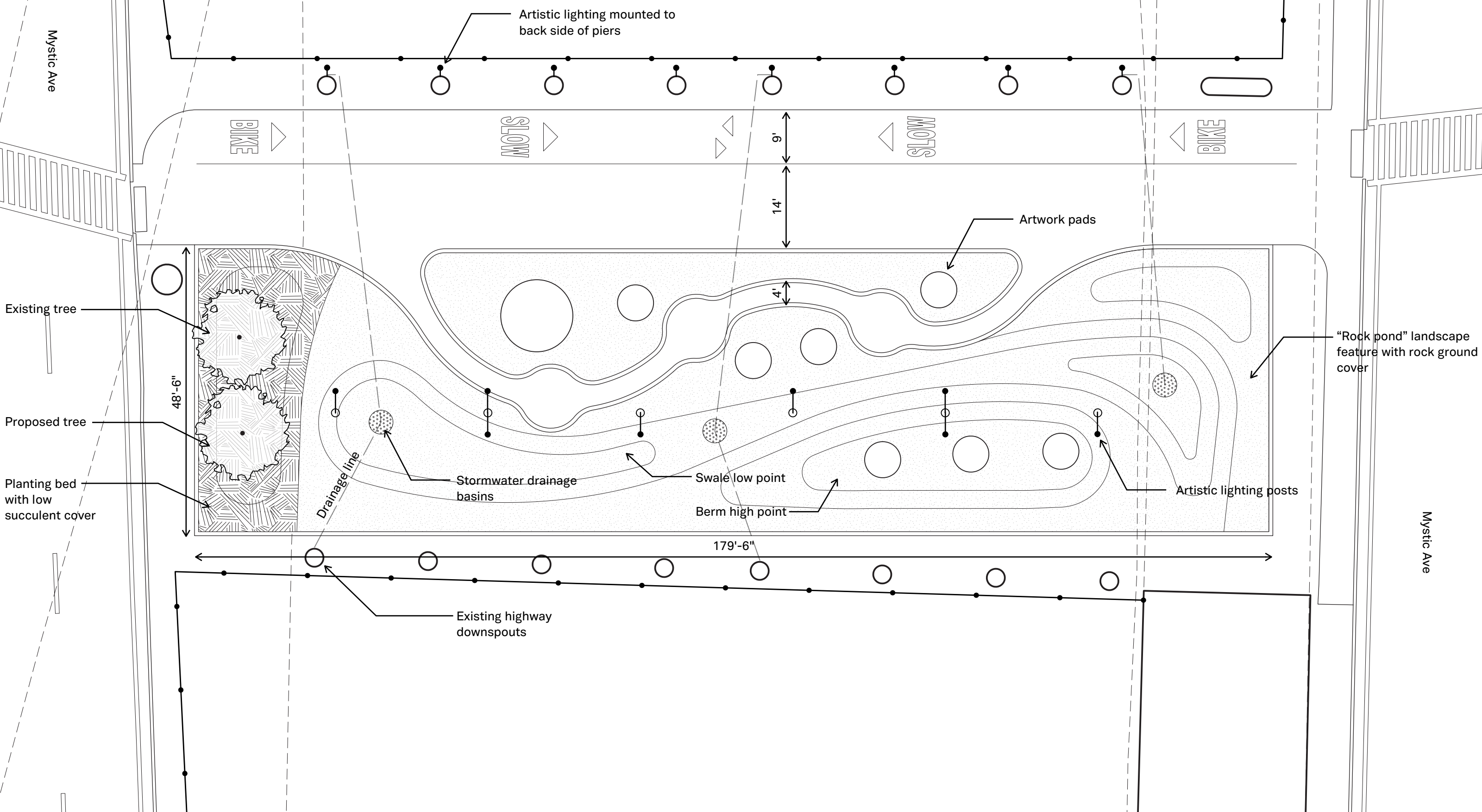
Option 3 **Natural**

- Suspended artwork
- Illuminated salt piles
- Painted underside of highway

OverUnder

Proposed Site Plan

Mystic Ave



Mystic Ave

VOTE ON YOUR FAVORITE CONCEPT:

https://voice.somervillema.gov/kensington-connector-revitalization/survey_tools/concept-design-input

QUESTIONS:

Please type your question & feedback into the chat box.

The City Moderator will announce questions to be answered



ROADWAY

UPDATE:

Rt 28 / Rt 38

Ali Kleyman - Mobility

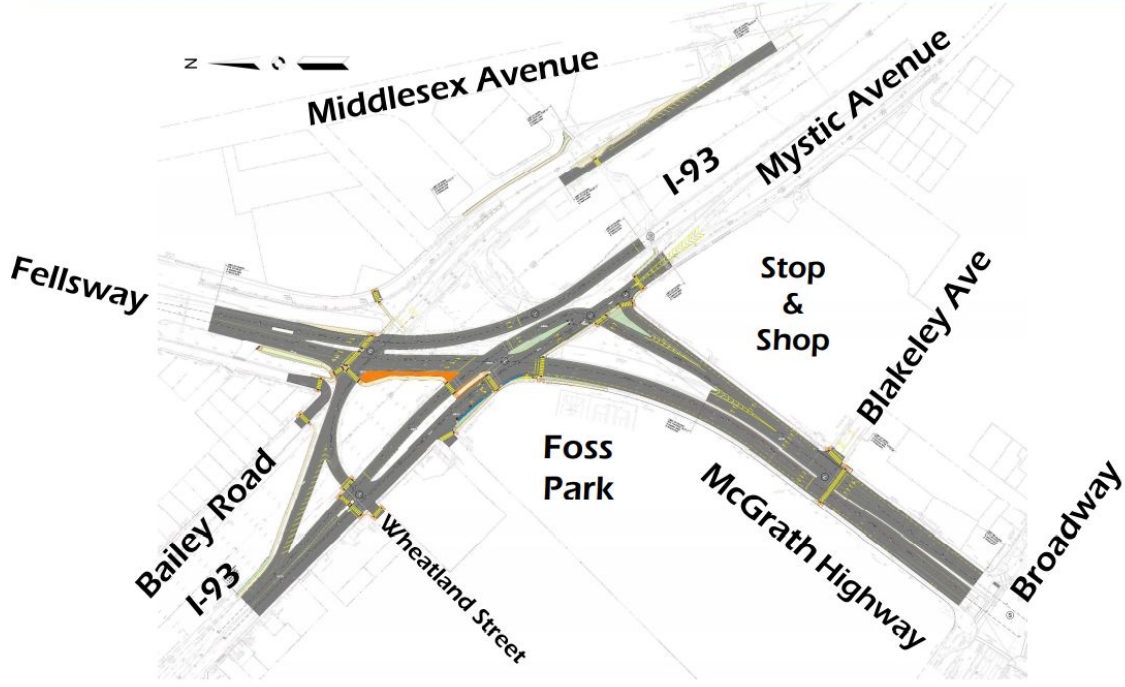


Route 28/38 Intersection Safety Improvements

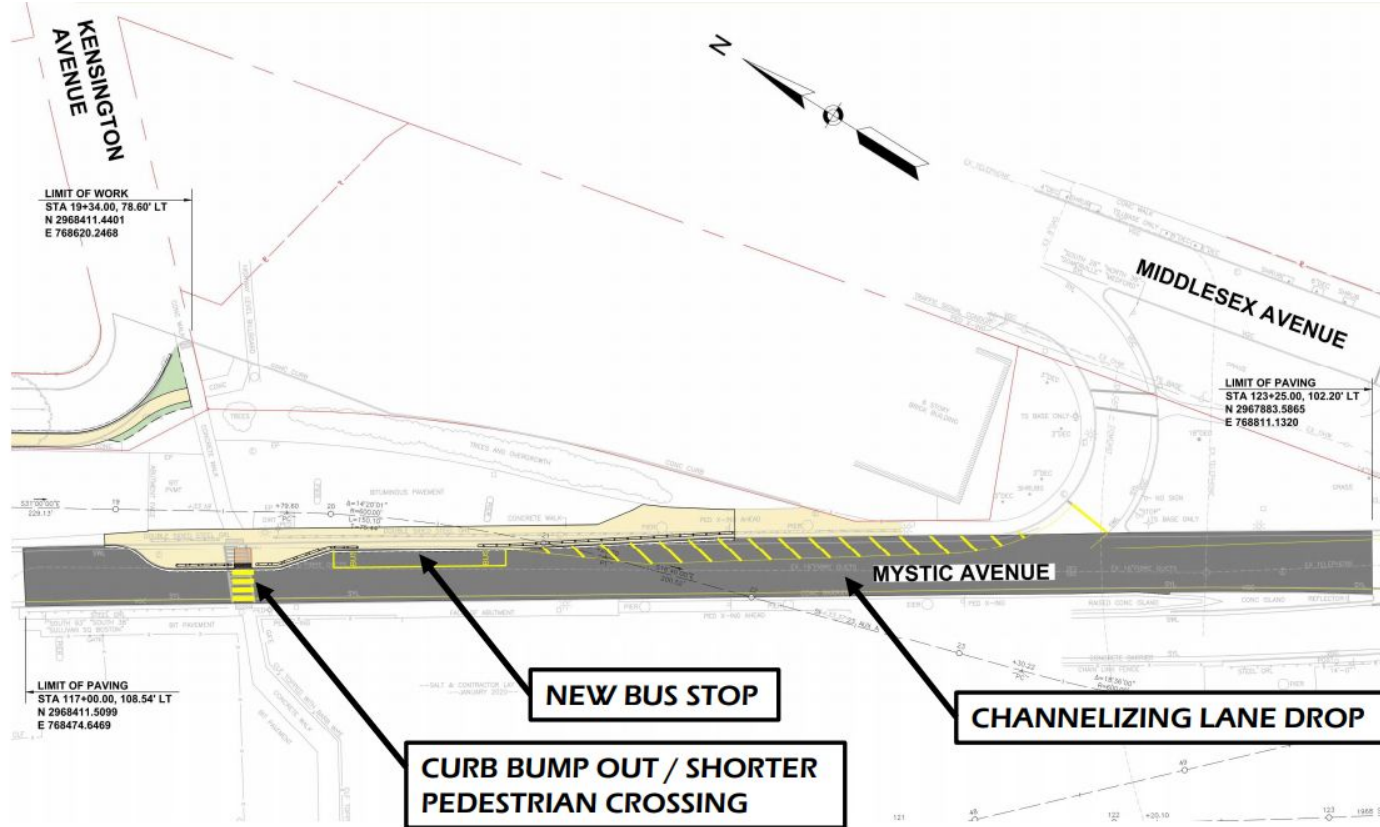


McGrath Highway (Route 28) / Mystic Avenue
(Route 38) Intersection Safety Improvements
Somerville | Project #608562

Project Area - Proposed Roadway Improvements



Mystic Ave. NB @ Kensington Connector



LEGEND

- ROADWAY BUFFER
- GRASS
- CEMENT CONCRETE SIDEWALK
- CEMENT CONCRETE WHEELCHAIR RAMP
- PAVEMENT RESURFACING

Route 28/38 Intersection Safety Improvements - Next Steps

- **Ongoing:** MassDOT and Somerville reviewing initial 25% designs
- **Mid-late summer 2021:** Design public hearing
- **Summer 2022:** Final design
- **Spring 2023:** Construction begins

QUESTIONS:

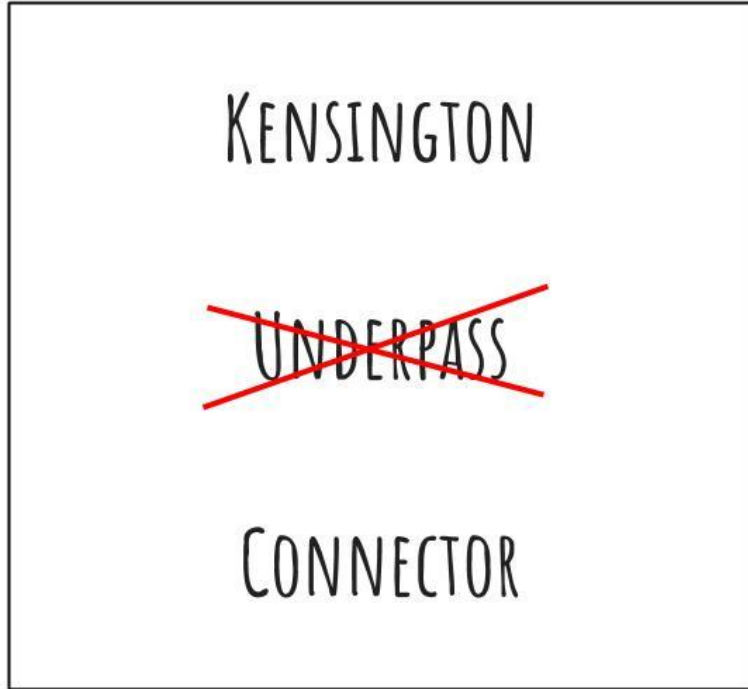
Please type your question & feedback into the chat box.

The City Moderator will announce questions to be answered

VOTE ON YOUR FAVORITE CONCEPT:

https://voice.somervillema.gov/kensington-connector-revitalization/survey_tools/concept-design-input





NEED TO REACH OUT?

Cortney Kirk - PSUF

ckirk@somervillema.gov

Ali Kleyman - Mobility

akleyman@somervillema.gov

<http://somervoice.somervillema.gov>

[Kensington Connector SV Page](#)

