

DRAFT

DRAFT

re/ imagine

Fort Worth

2050 Comprehensive Plan

Existing Conditions & Trends

For more information, contact FWLab at
longrangeplanning@fortworthtexas.gov

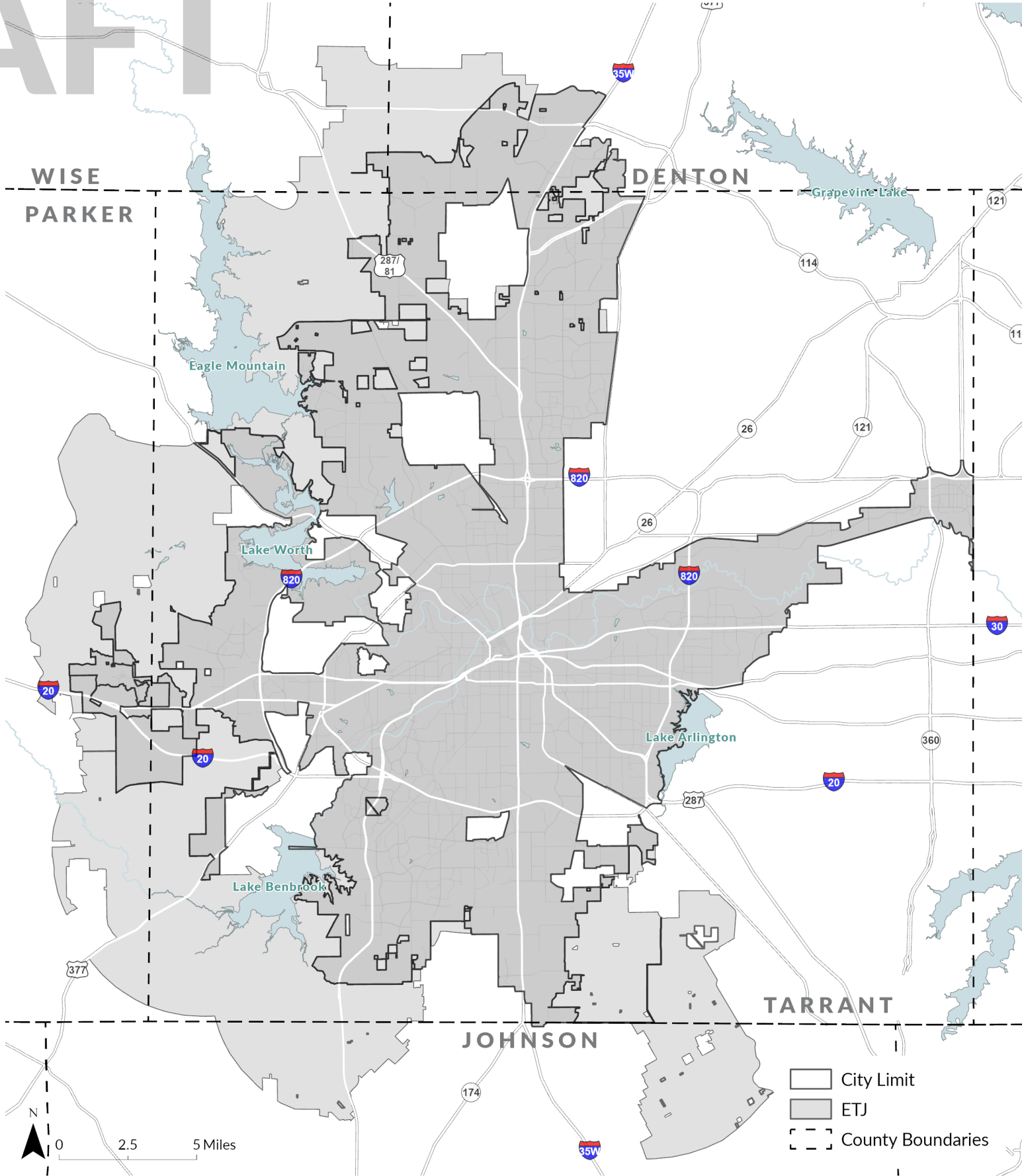
April 2024



City Limits & Extra-Territorial Jurisdiction

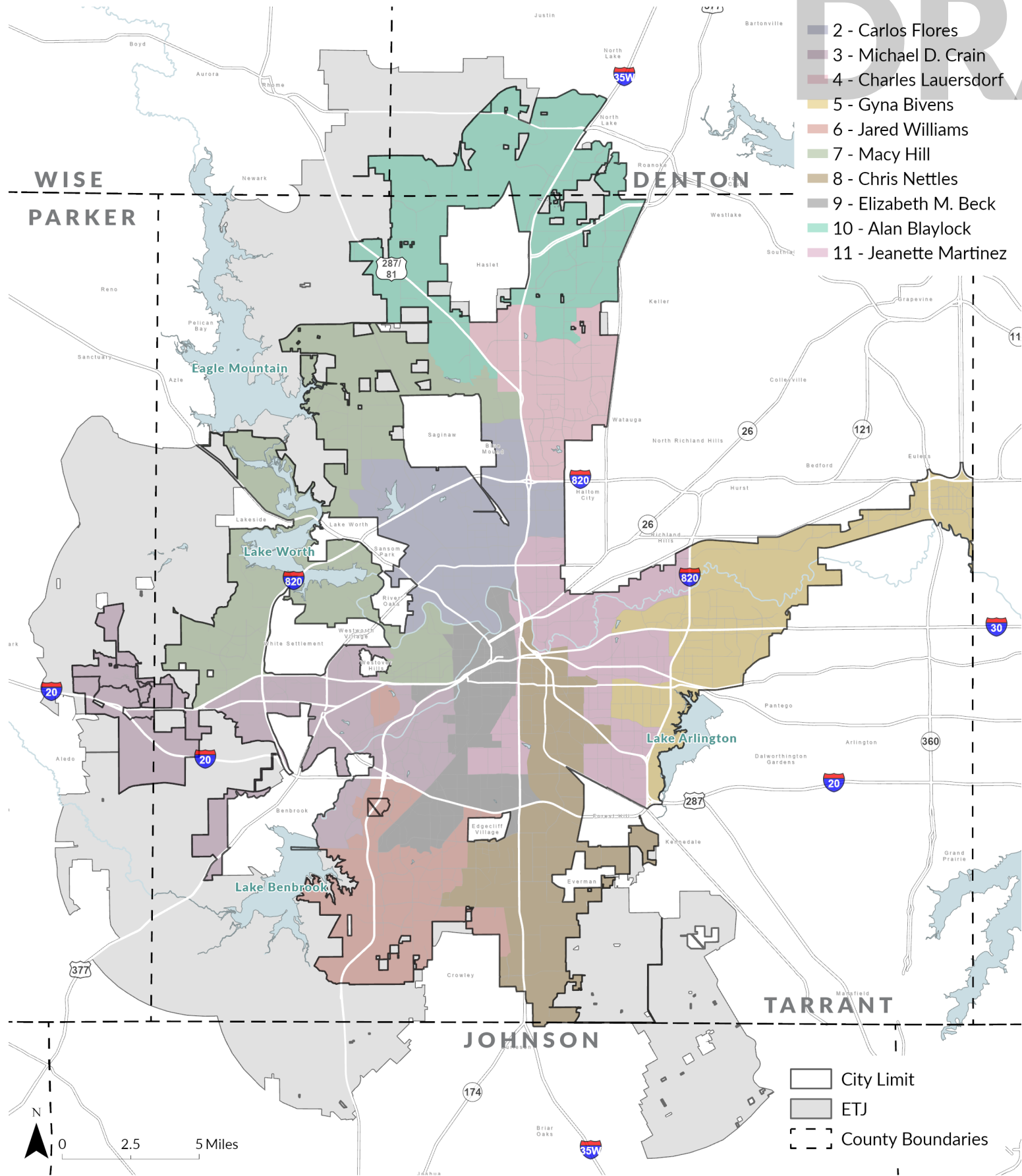
DRAFT

This page intentionally left blank

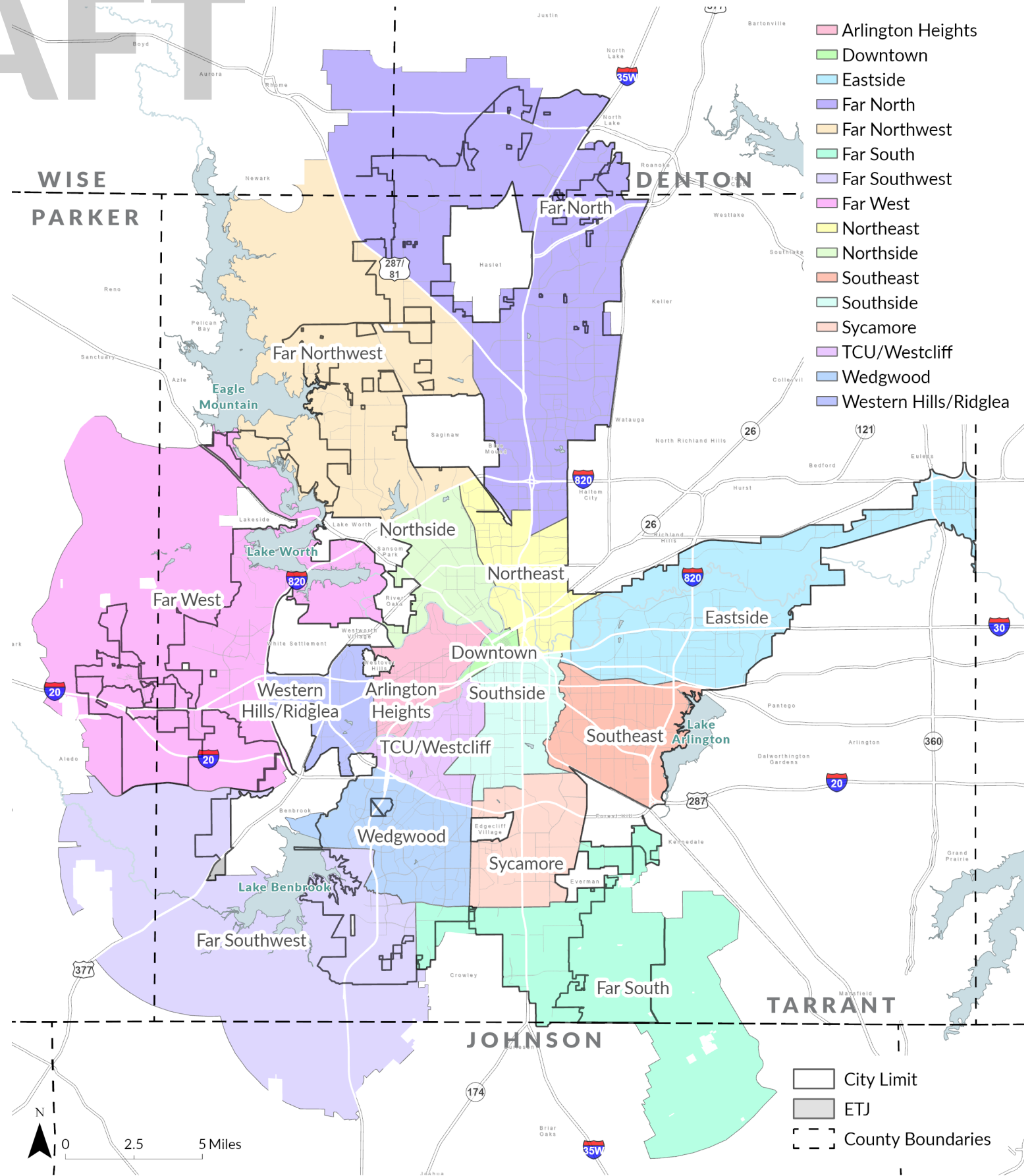


Source:
City of Fort Worth

City Council Districts



Planning Sectors



Source:
City of Fort Worth

Source:
City of Fort Worth

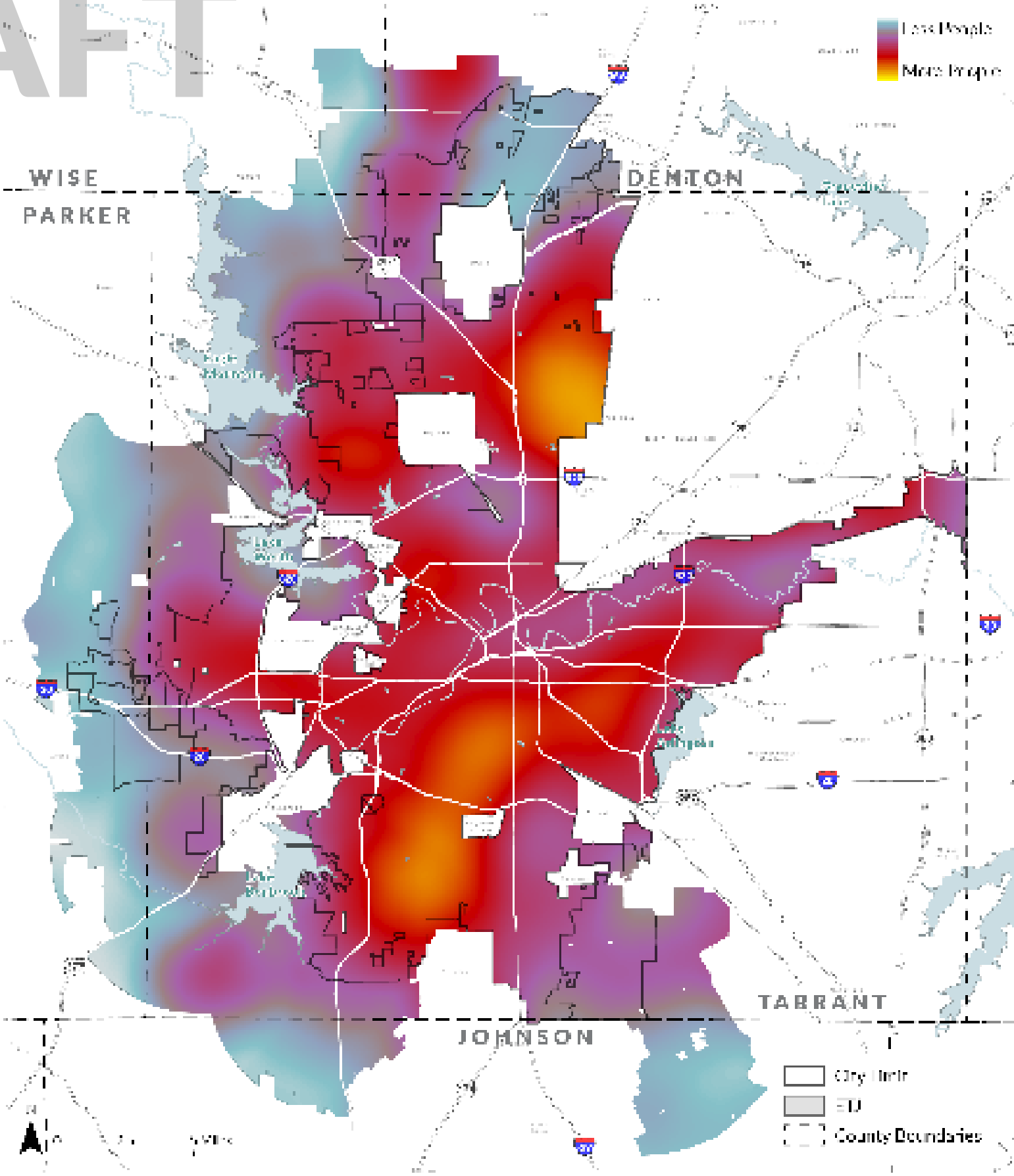
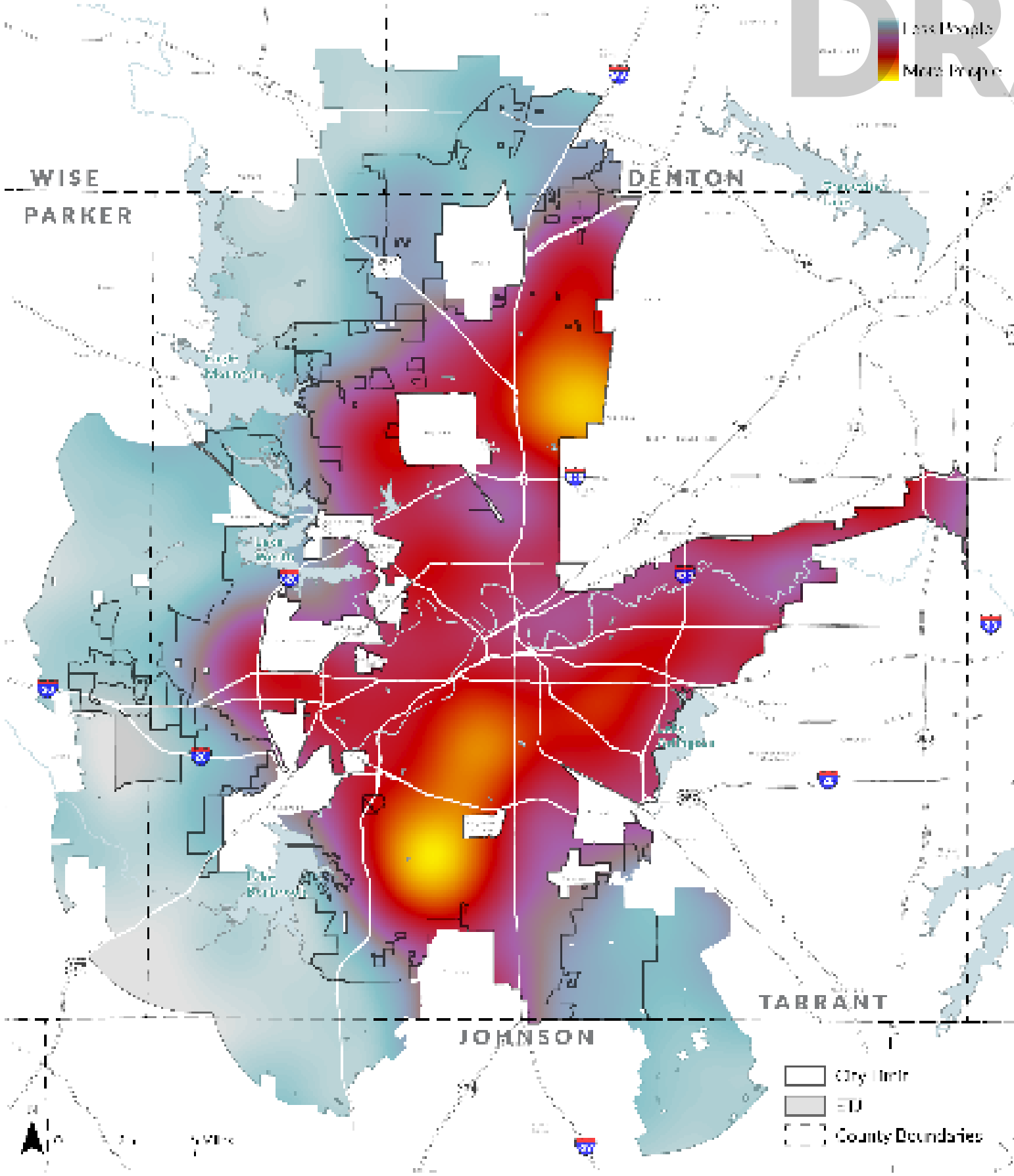
Population: 2022

956,709
Population

Projected Population: 2045

1,206,100
Projected Population

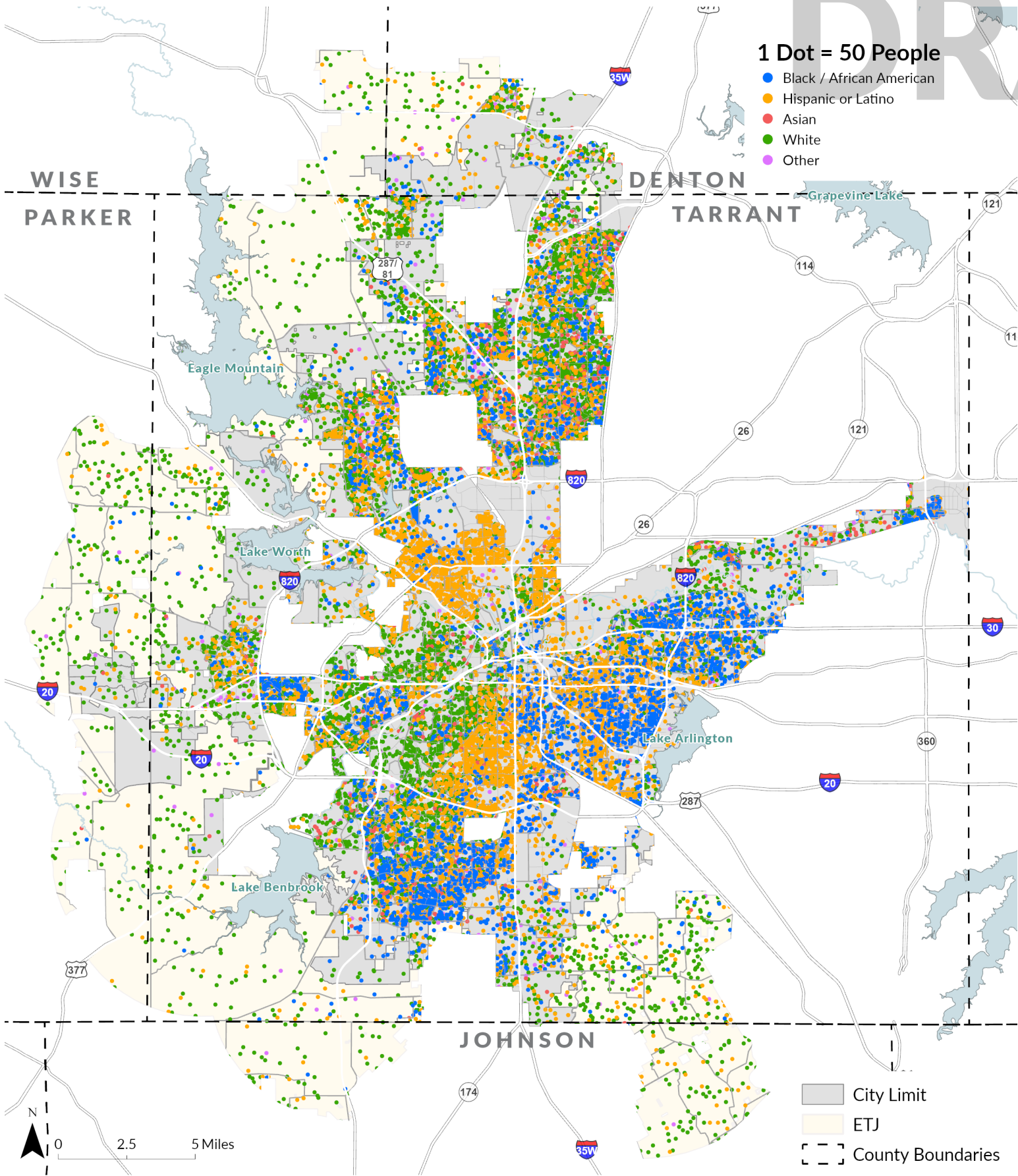
DRAFT



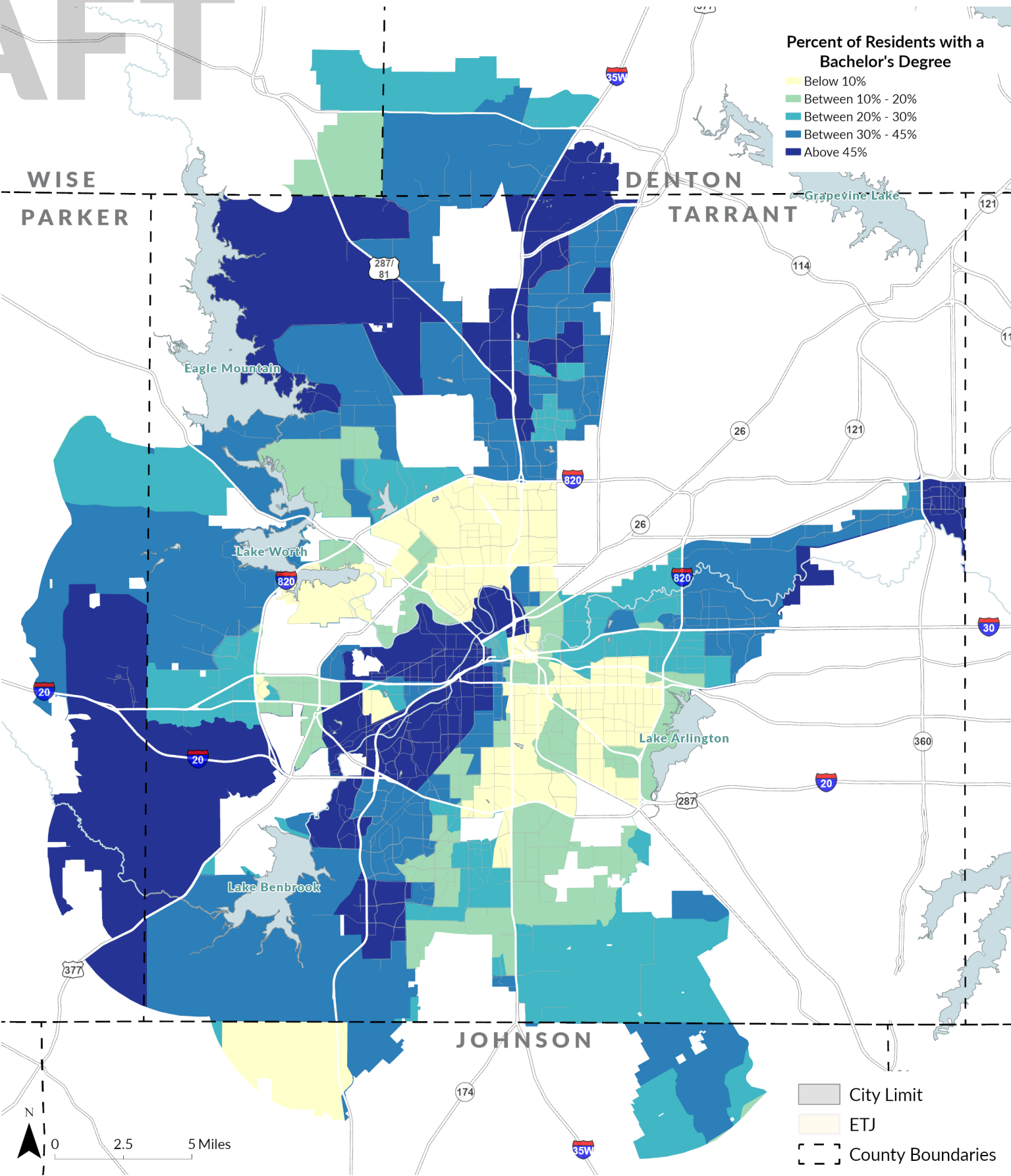
Source: NCTCOG

Source: NCTCOG

Race & Ethnicity



Educational Attainment



DRAFT

Source: U.S. Census Bureau, American Community Survey (ACS), 2018-2022 5-year Estimates

Source: U.S. Census Bureau, American Community Survey (ACS), 2018-2022 5-year Estimates

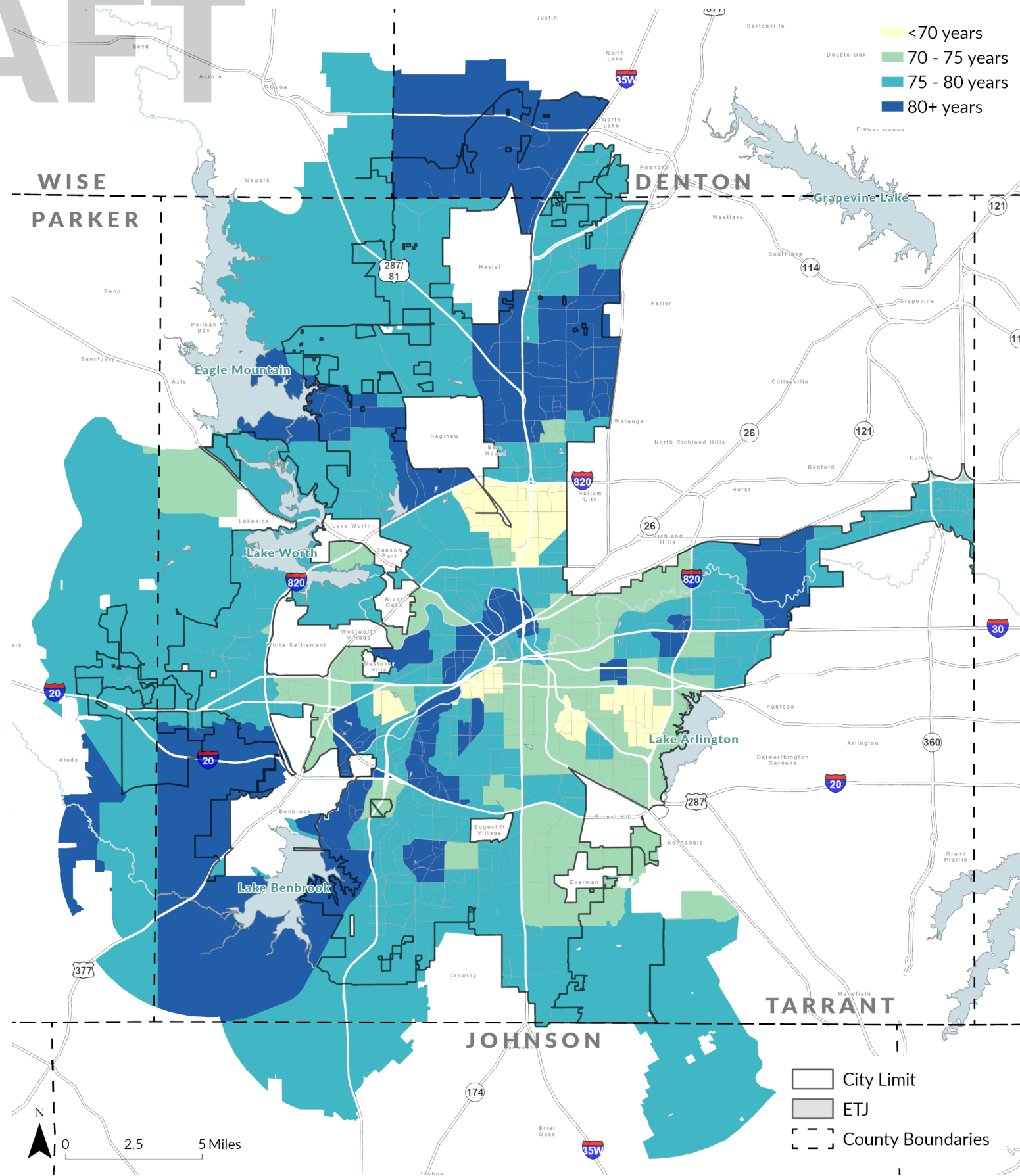
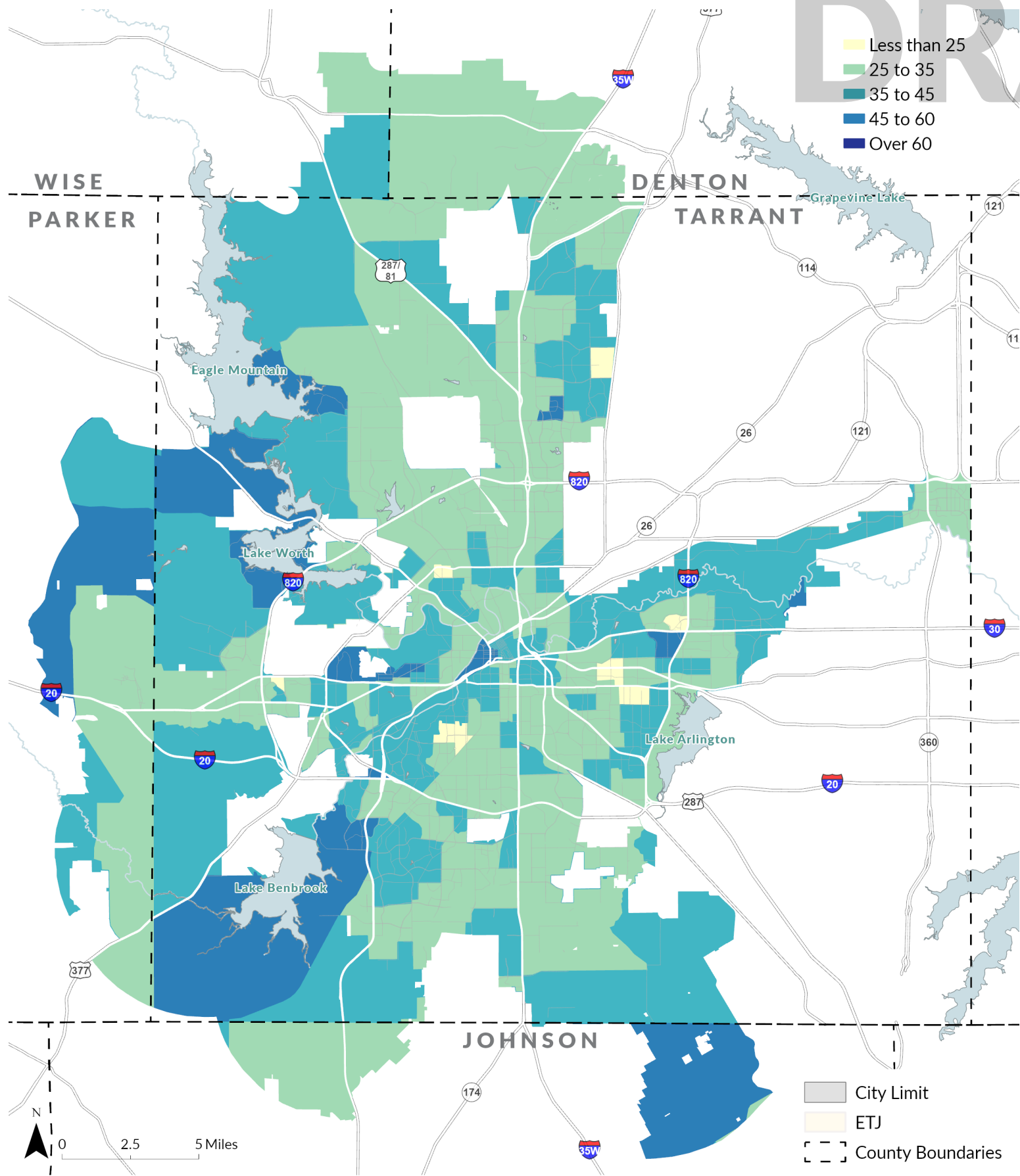
Median Age

33.2 years
Citywide

Life Expectancy at Birth

77.5 years
Citywide

DRAFT



Source: U.S. Census Bureau, American Community Survey (ACS), 2018-2022 5-year Estimates Table B01002 Median Age by Sex

Source: CDC National Center for Health Statistics U.S. Small-area Life Expectancy Estimates Project (USALEEP) 2010-2015

Social Vulnerability Index

Social vulnerability refers to the resilience of communities (the ability to survive and thrive) when confronted by external stresses. Vulnerable communities may have less capacity to anticipate, confront, repair, and recover from the effects of a major change or disaster.

The CDC Social Vulnerability Index (SVI) uses several variables to assess the relative vulnerability of every U.S. Census tract. These variables are listed below. Tracts identified as High Vulnerability on the map are more vulnerable than 75% of Census Tracts nationwide.

Overall Social Vulnerability

Socioeconomic Status

- Below 150% poverty
- Unemployed
- Housing cost burden
- No high school diploma
- No health insurance

Household Characteristics

- Aged 65 & older
- Aged 17 & younger
- Civilian with a disability
- Single-parent households
- English language proficiency

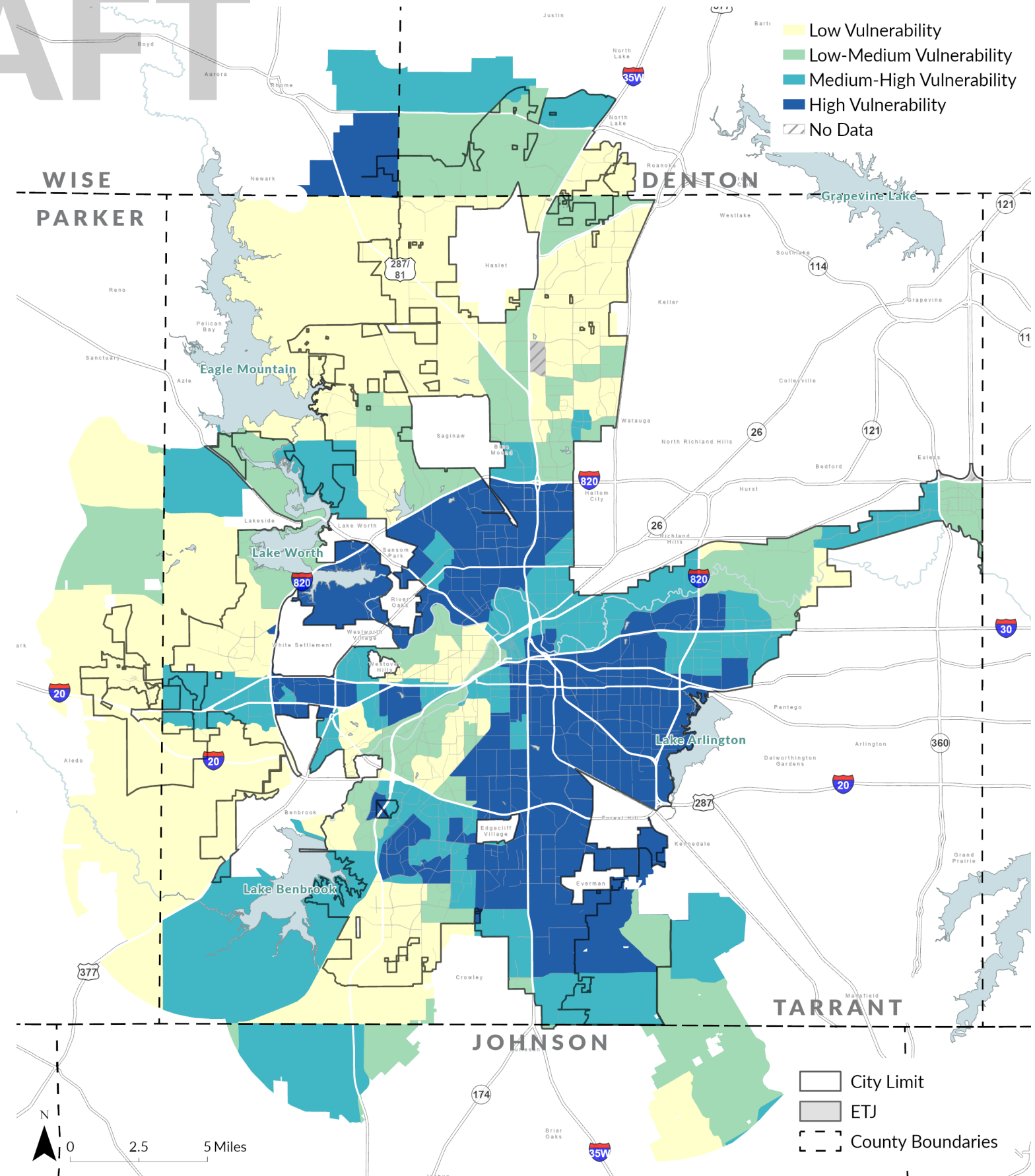
Racial & Ethnic Minority Status

- Hispanic or Latino (of any race)
- Black or African American, Not Hispanic or Latino
- American Indian or Alaska Native, Not Hispanic or Latino
- Native Hawaiian or Pacific Islander, Not Hispanic or Latino
- Two or More Races, Not Hispanic or Latino
- Other Races, Not Hispanic or Latino

Housing Type & Transportation

- Multi-Unit Structures
- Mobile Homes
- Crowding
- No Vehicle
- Group Quarters

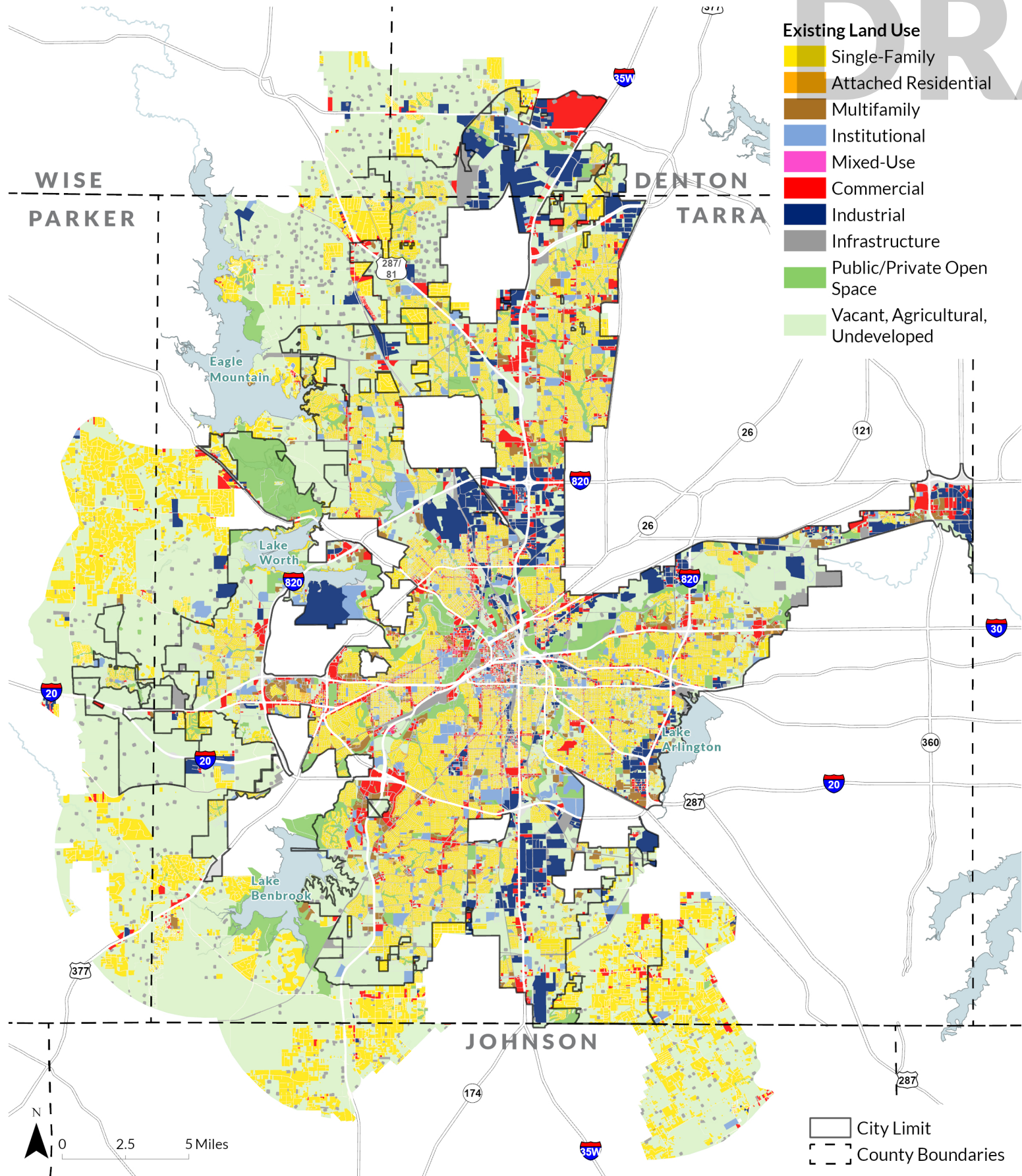
DRAFT



Source: CDC/ATSDR Social Vulnerability Index, United States, 2020

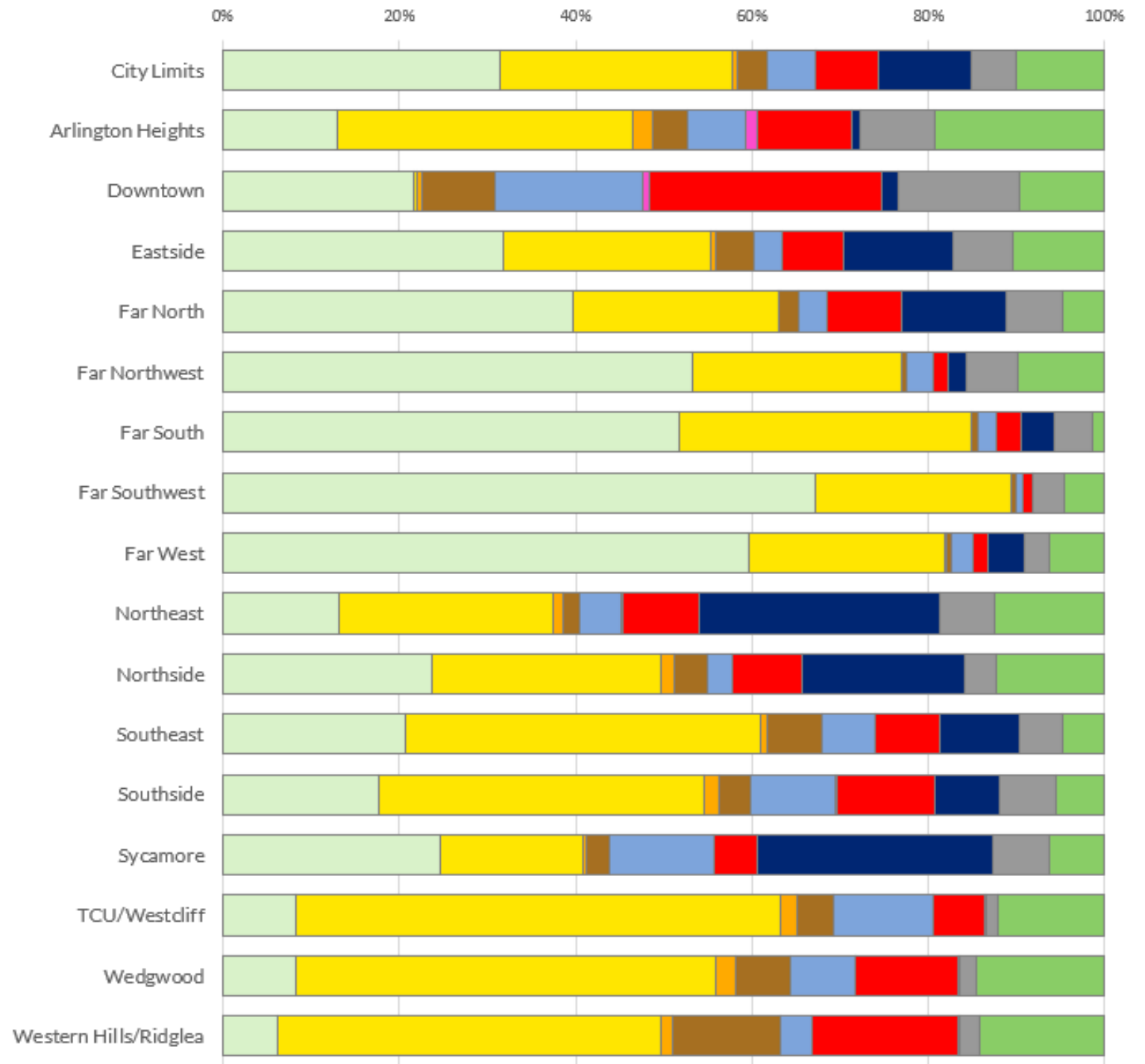
Existing Land Use

DRAFT



- Existing Land Use**
- Single-Family
 - Attached Residential
 - Multifamily
 - Institutional
 - Mixed-Use
 - Commercial
 - Industrial
 - Infrastructure
 - Public/Private Open Space
 - Vacant, Agricultural, Undeveloped

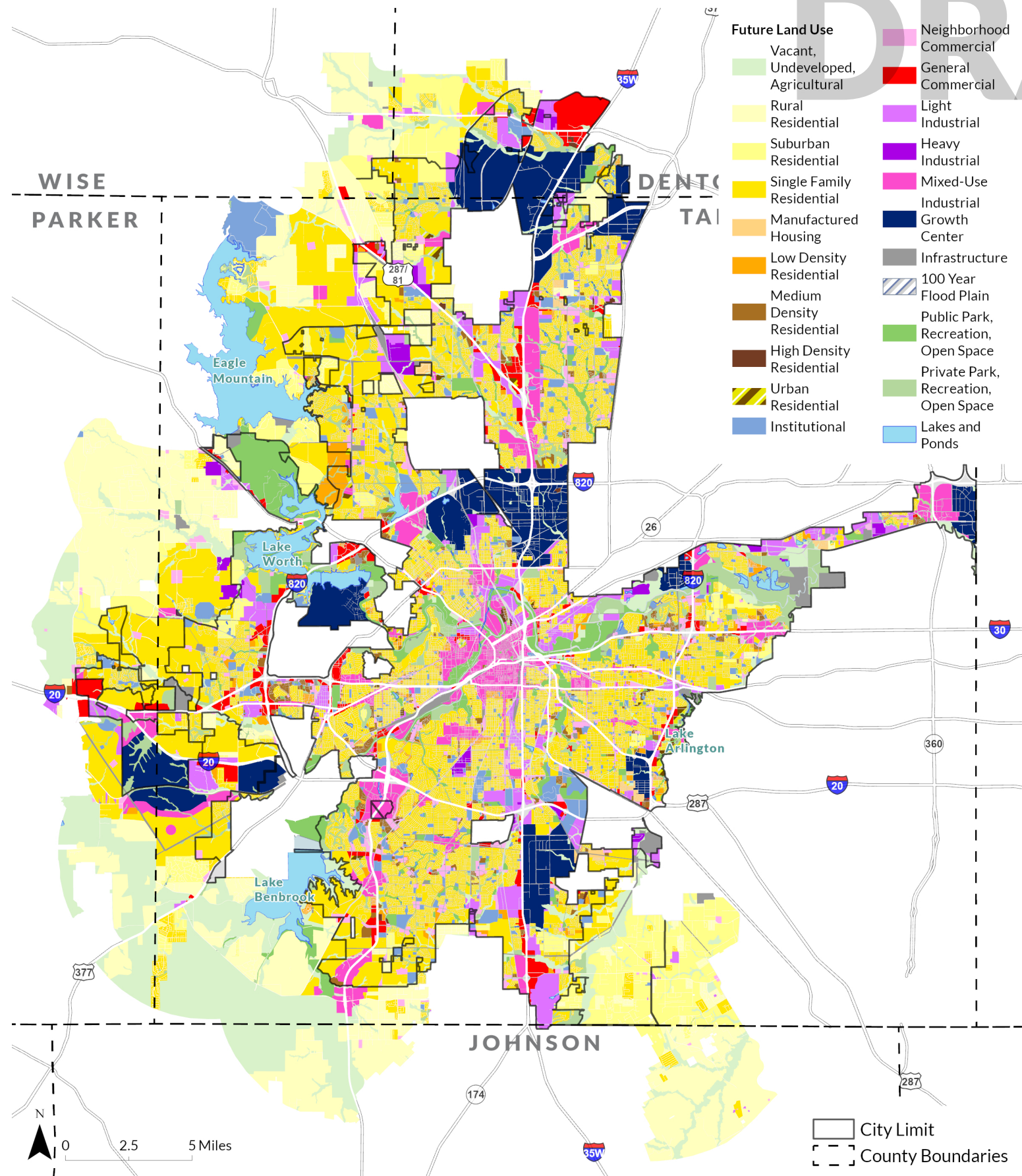
City Limit
County Boundaries



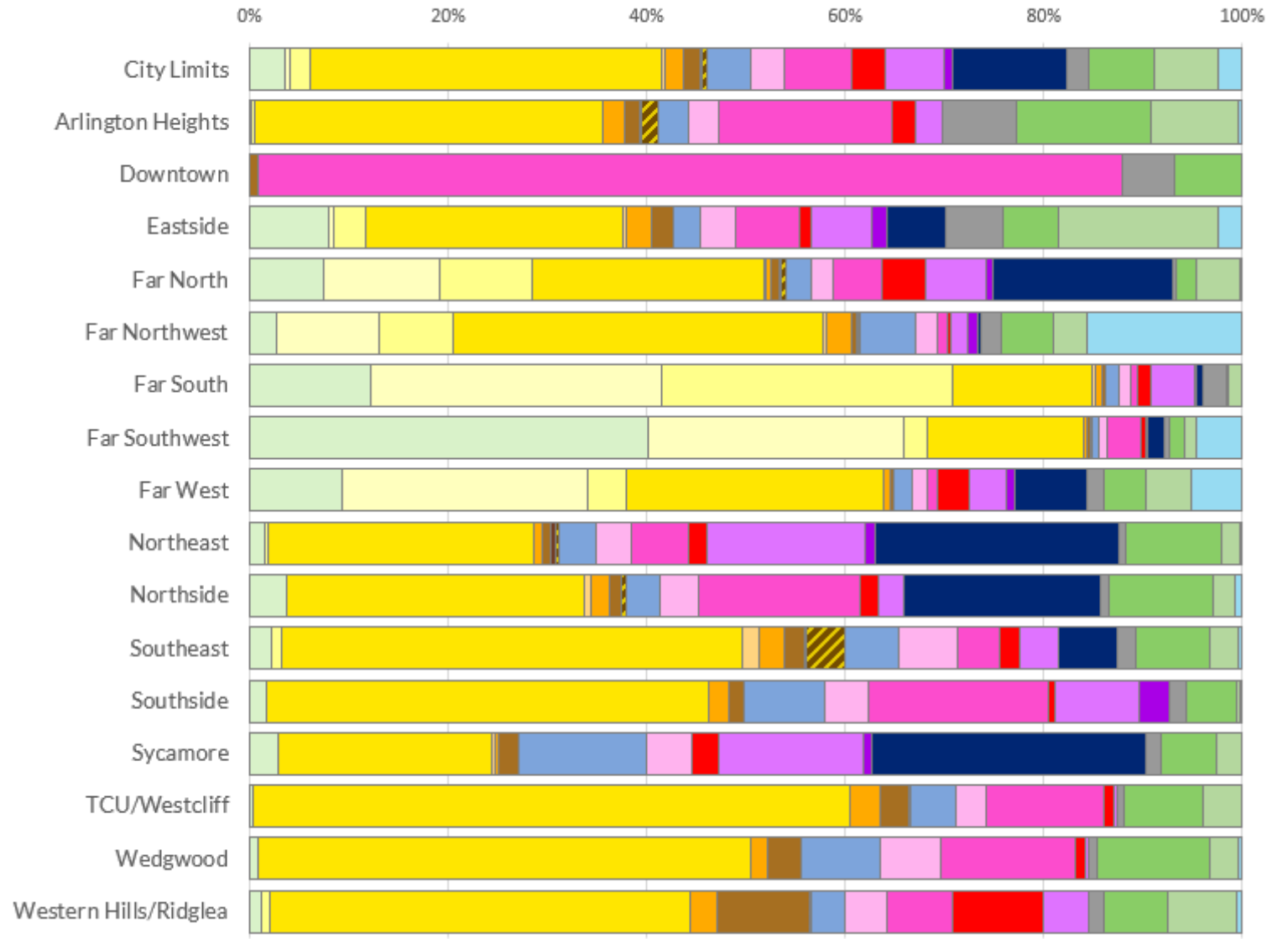
Source:

Future Land Use

DRAFT



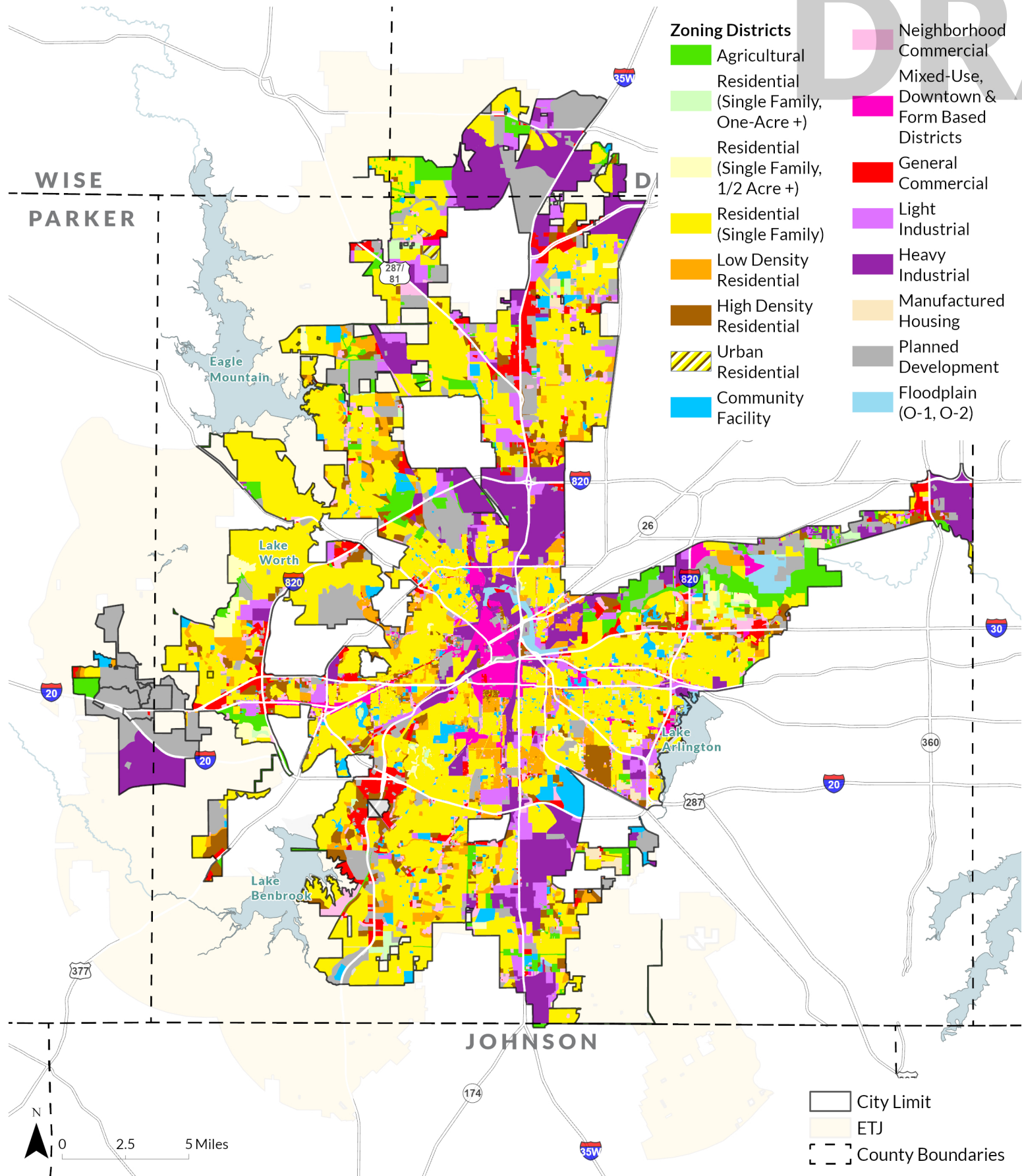
- Future Land Use**
- Vacant, Undeveloped, Agricultural
 - Rural Residential
 - Suburban Residential
 - Single Family Residential
 - Manufactured Housing
 - Low Density Residential
 - Medium Density Residential
 - High Density Residential
 - Urban Residential
 - Institutional
 - Neighborhood Commercial
 - General Commercial
 - Light Industrial
 - Heavy Industrial
 - Mixed-Use
 - Industrial Center
 - Infrastructure
 - 100 Year Flood Plain
 - Public Park, Recreation, Open Space
 - Private Park, Recreation, Open Space
 - Lakes and Ponds



Source:

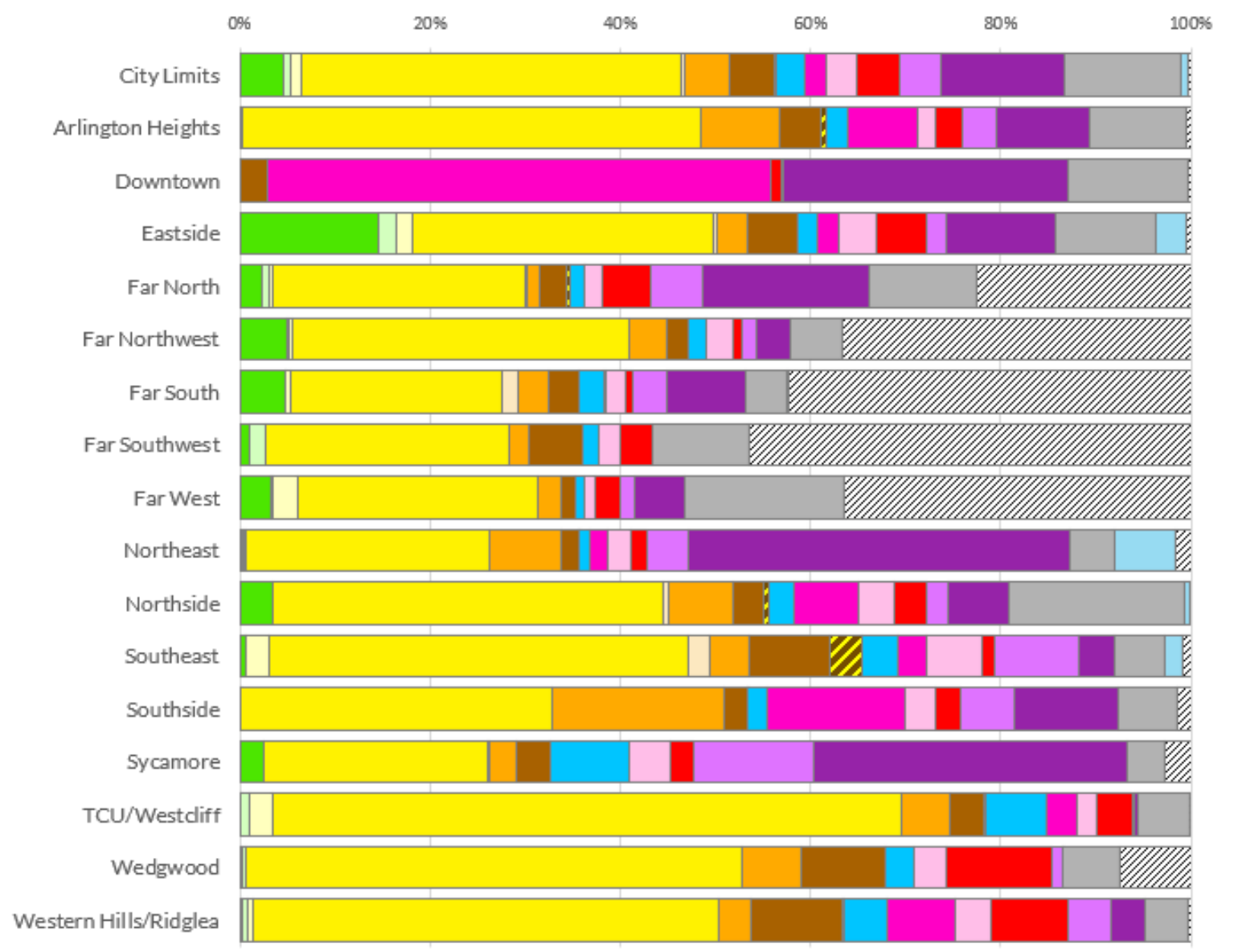
Zoning

DRAFT



- Zoning Districts**
- Agricultural
 - Residential (Single Family, One-Acre +)
 - Residential (Single Family, 1/2 Acre +)
 - Residential (Single Family)
 - Low Density Residential
 - High Density Residential
 - Urban Residential
 - Community Facility
 - Neighborhood Commercial
 - Mixed-Use, Downtown & Form Based Districts
 - General Commercial
 - Light Industrial
 - Heavy Industrial
 - Manufactured Housing
 - Planned Development
 - Floodplain (O-1, O-2)

- City Limit
- ETJ
- County Boundaries



Source:

Housing Units

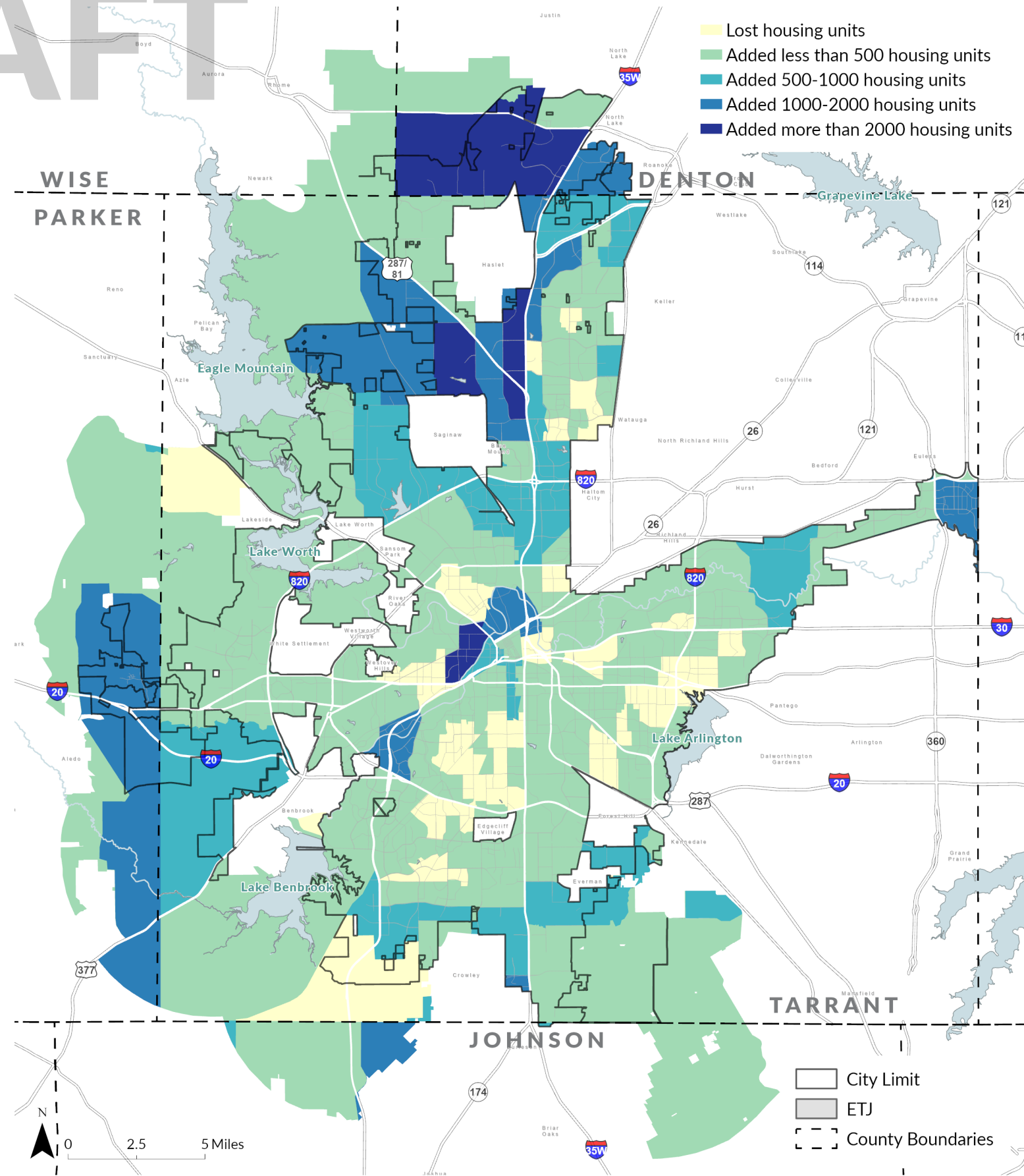
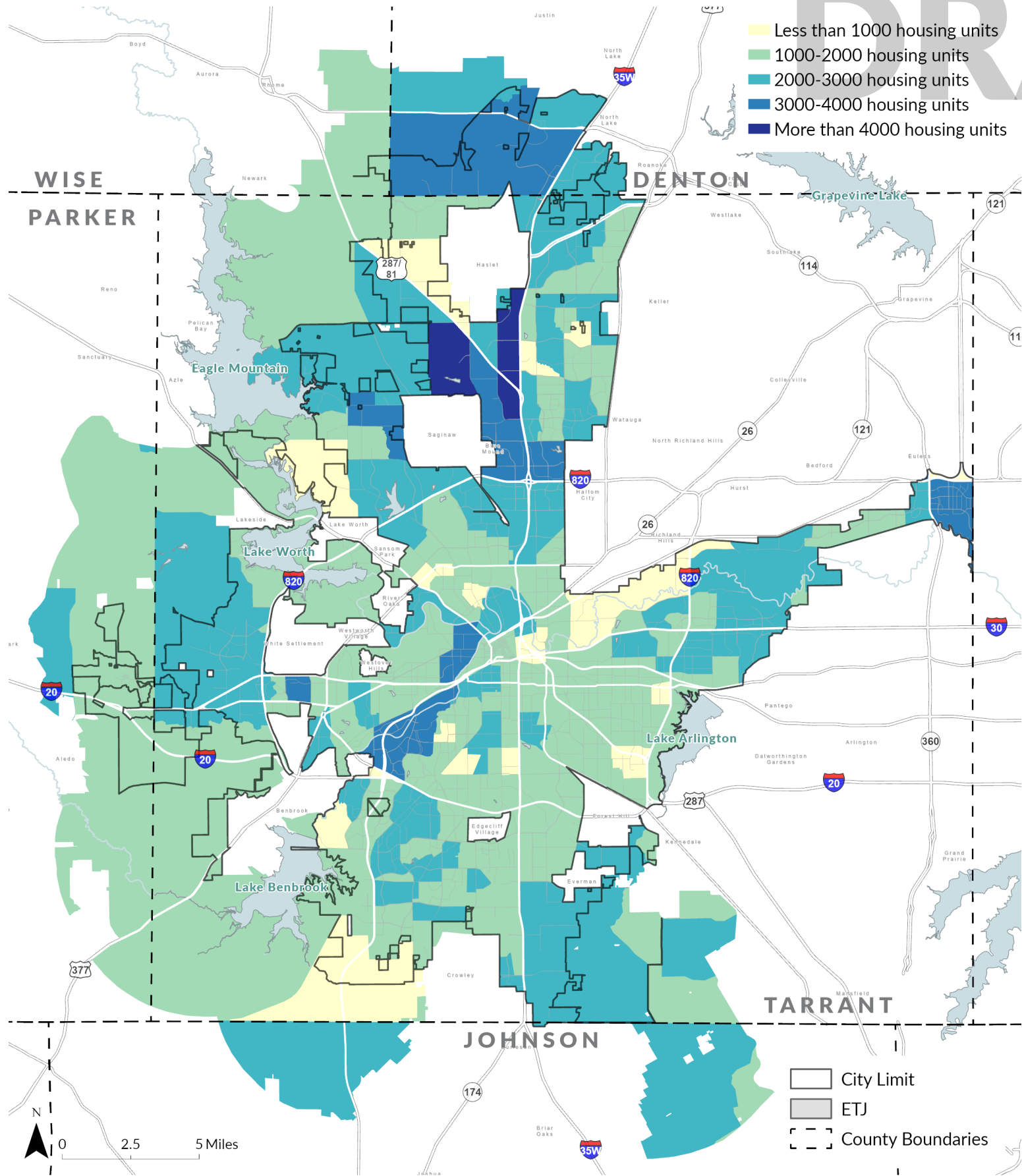
356,210
Citywide

Housing Unit Change 2010-2020

+52,916
Citywide

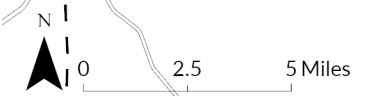
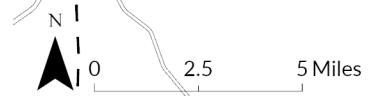
- Less than 1000 housing units
- 1000-2000 housing units
- 2000-3000 housing units
- 3000-4000 housing units
- More than 4000 housing units

- Lost housing units
- Added less than 500 housing units
- Added 500-1000 housing units
- Added 1000-2000 housing units
- Added more than 2000 housing units



City Limit
ETJ
County Boundaries

City Limit
ETJ
County Boundaries

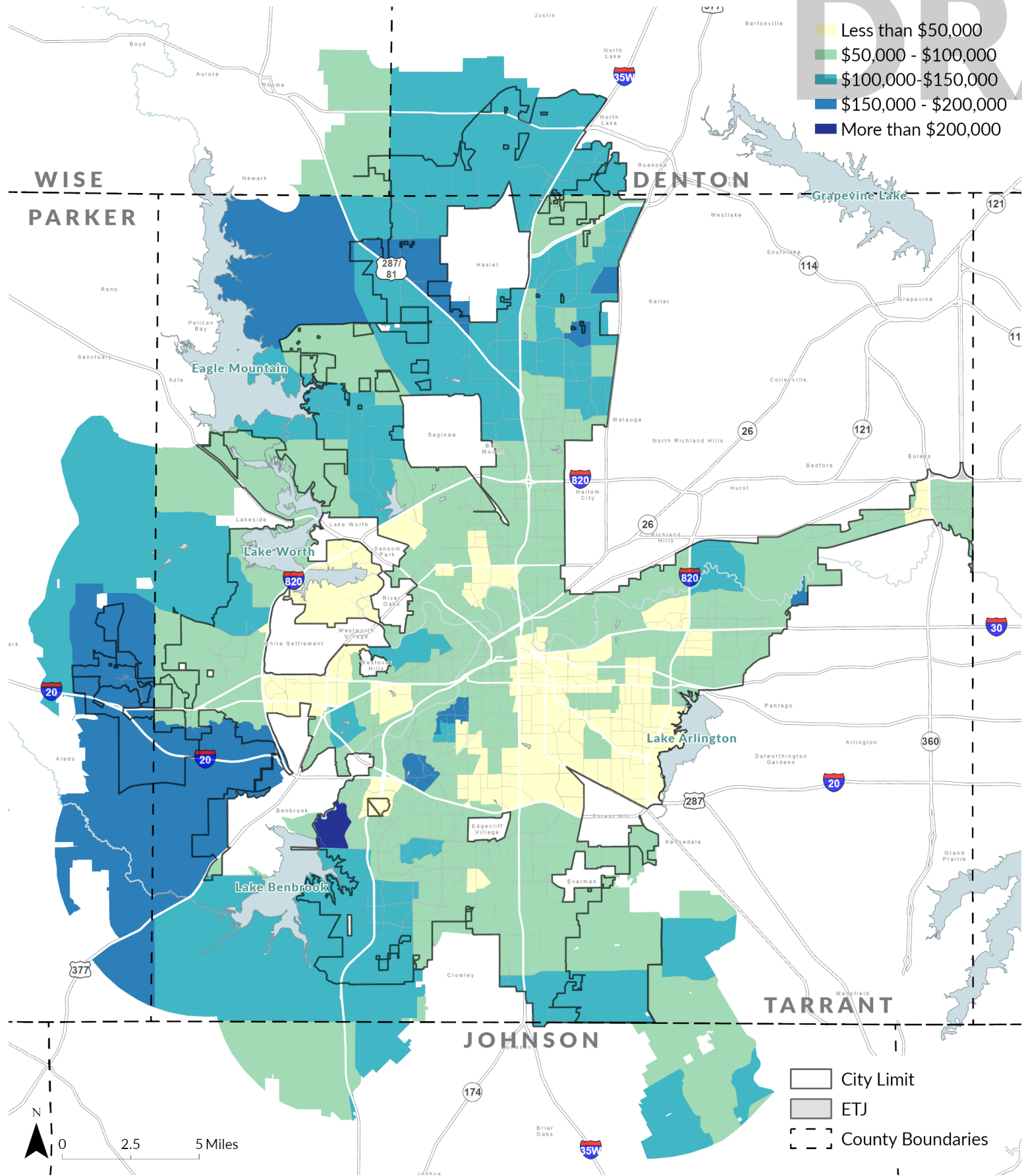


Source: U.S. Census Bureau, American Community Survey (ACS), 2018-2022 5-year Estimates Table B25001 Housing Units

Source: U.S. Census Bureau, Difference Decennial Census 2010 and 2020 Table H1 Occupancy Status

Median Household Income

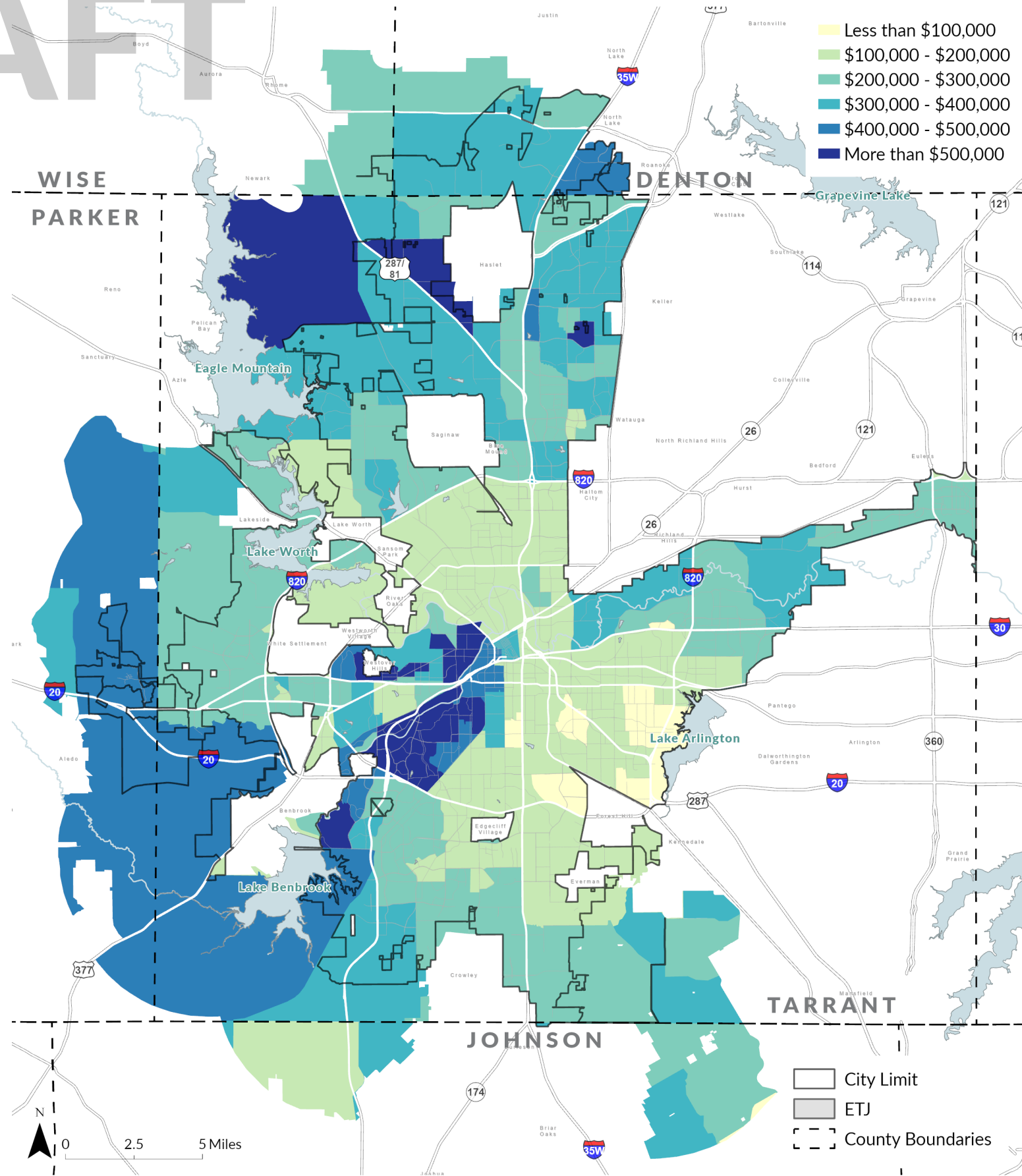
\$72,726
Citywide



Source: U.S. Census Bureau, American Community Survey (ACS), 2018-2022 5-year Estimates Table B19013: Median Household Income

Median Home Value

\$250,300
Citywide



Source: U.S. Census Bureau, American Community Survey (ACS), 2018-2022 5-year Estimates Table B25077: Median Value (Dollars), Owner-occupied housing units

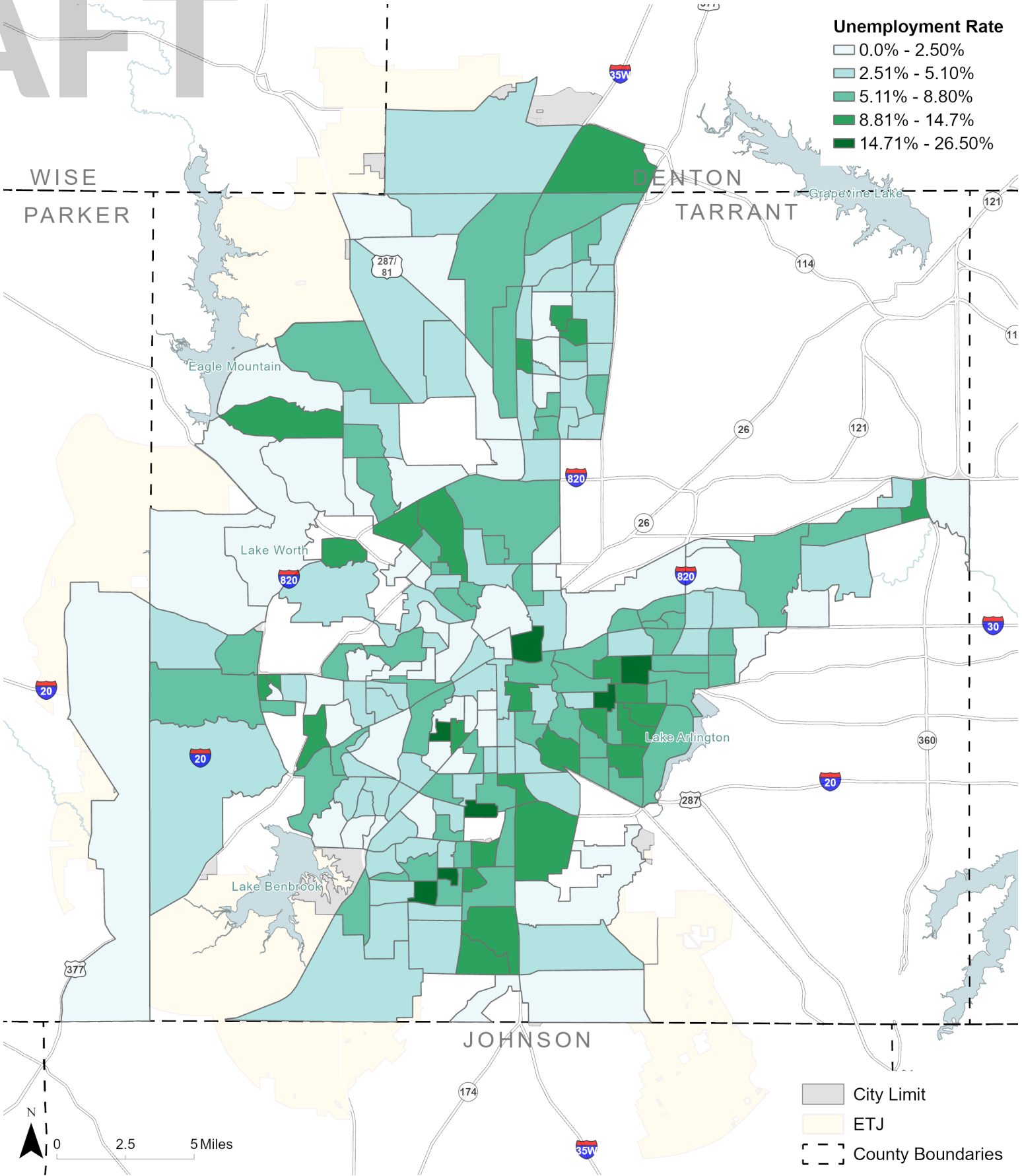
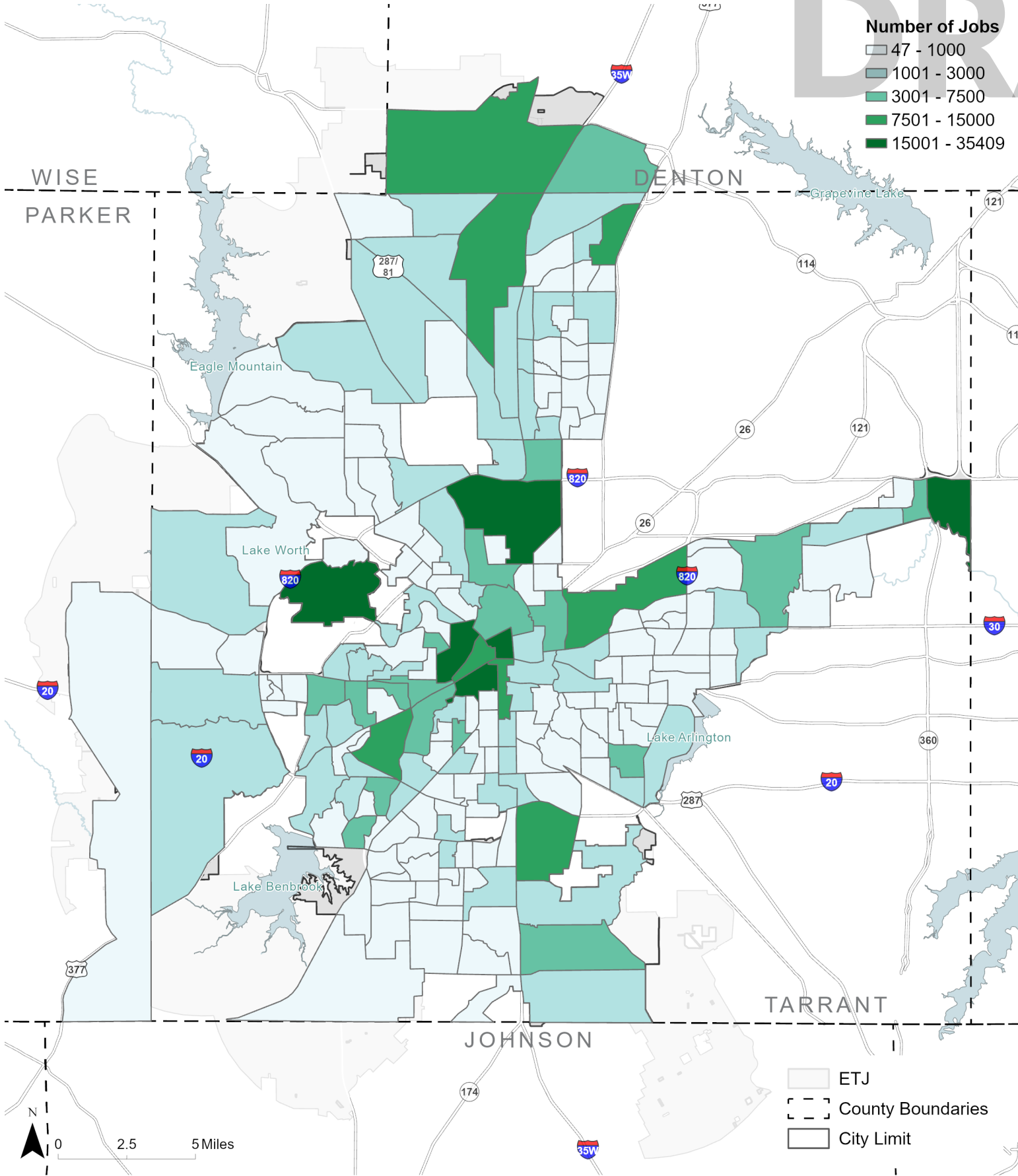
Number of Jobs

443,660
Citywide

Unemployment Rate

3.8%
Citywide

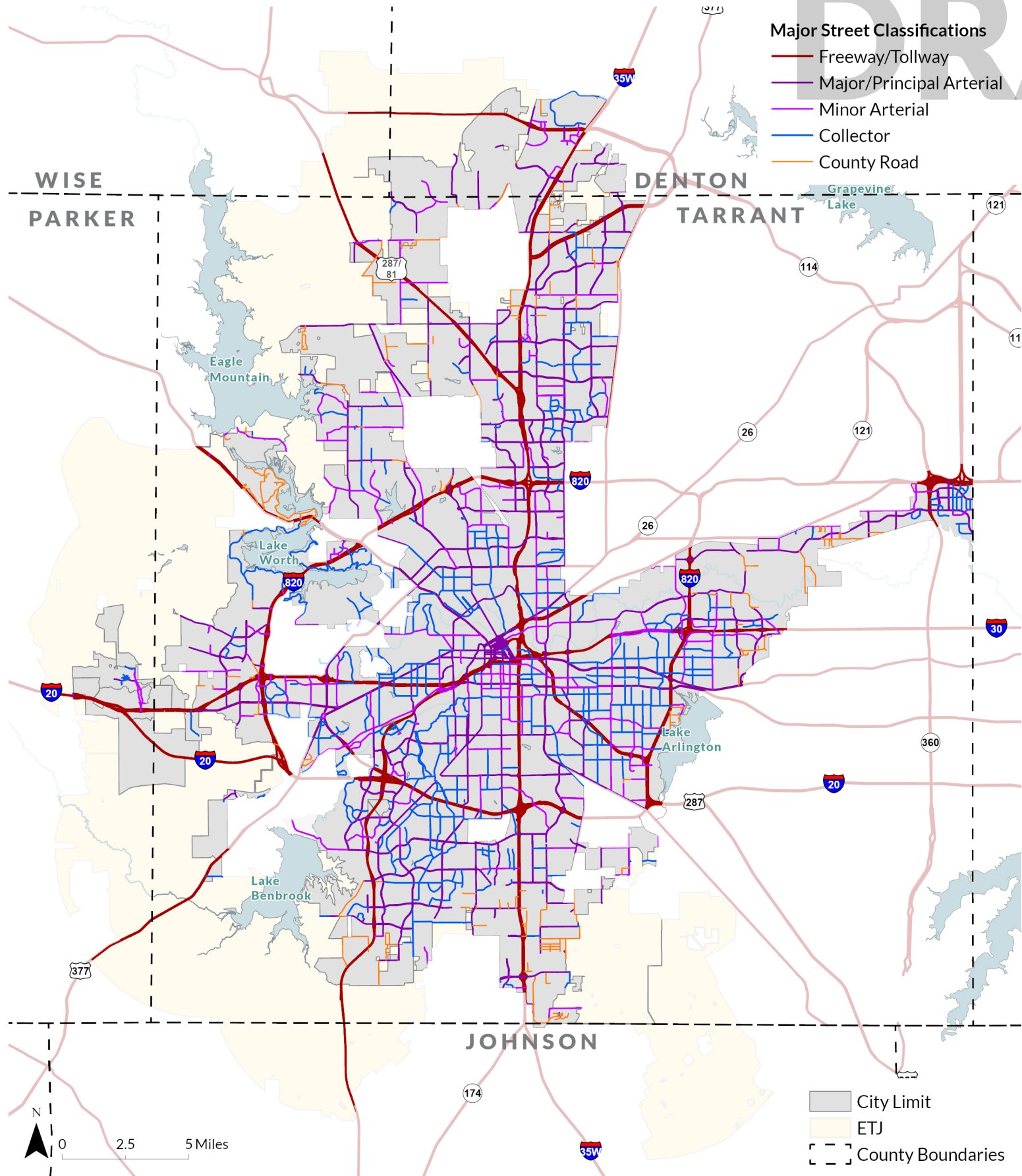
DRAFT



Source: U.S. Census Bureau, American Community Survey (ACS), 2018-2022 5-year Estimates

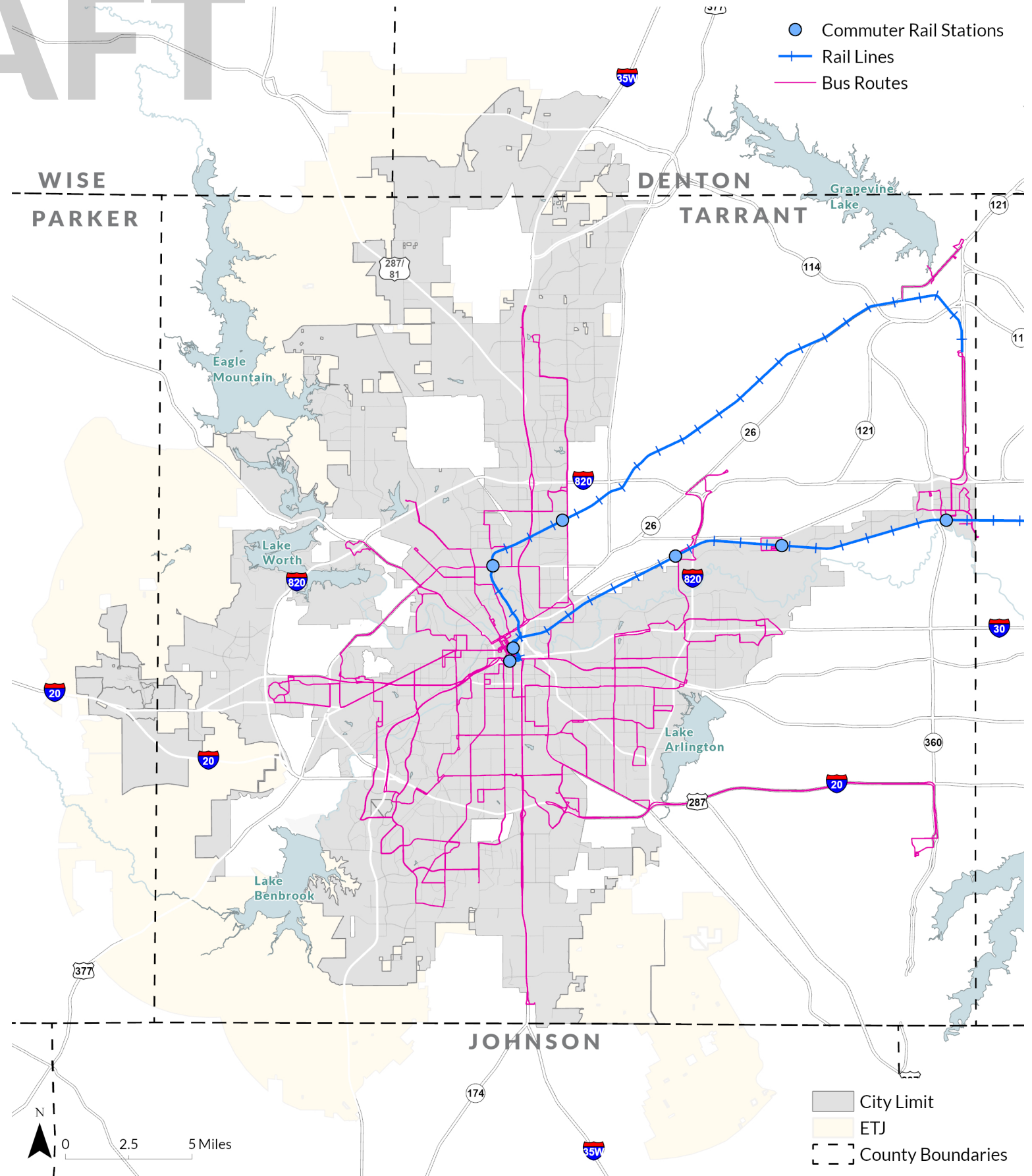
Source: U.S. Census Bureau, American Community Survey (ACS), 2018-2022 5-year Estimates

Road Network



Source: City of Fort Worth

Transit Network

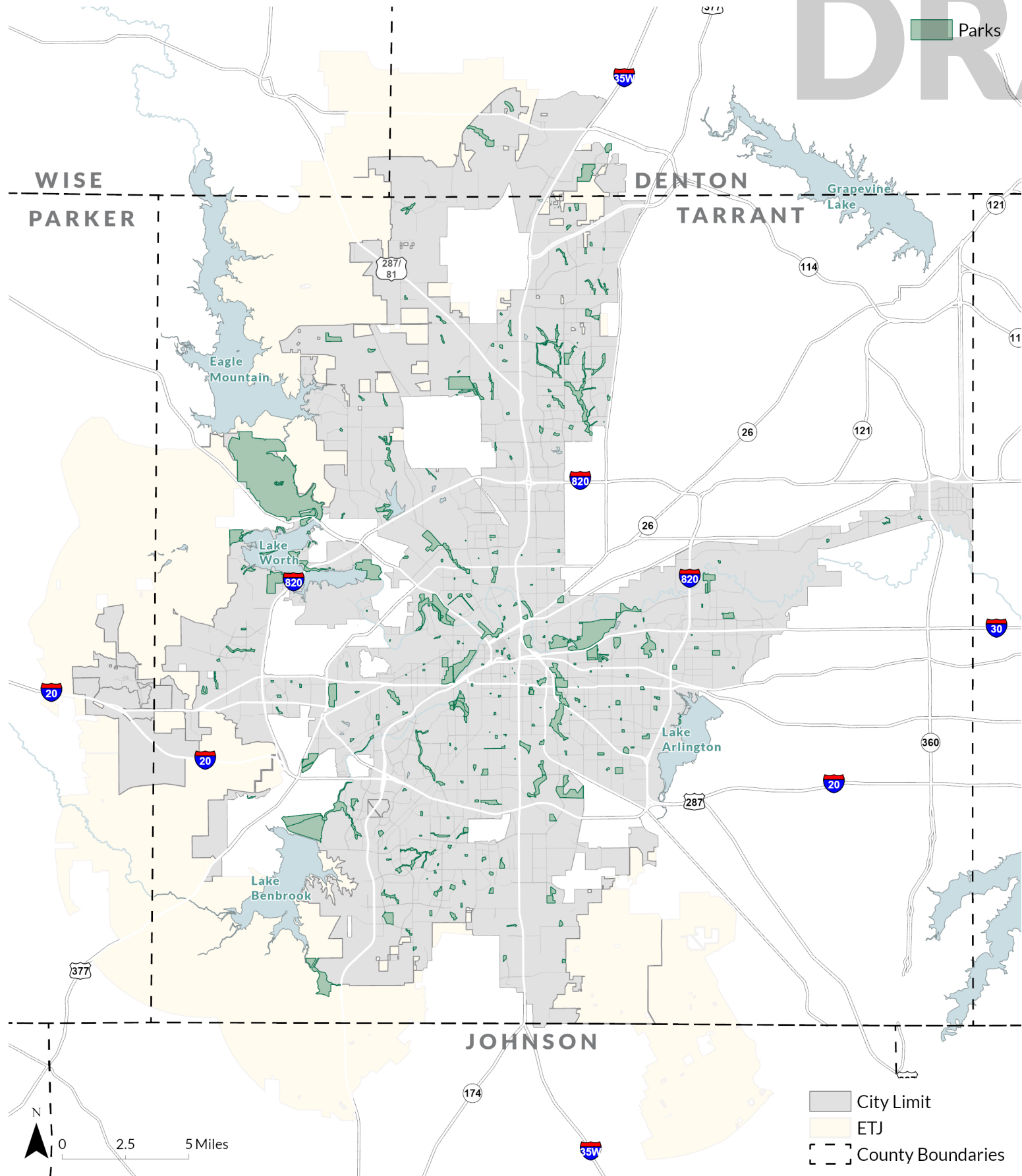


Source: Trinity Metro

DRAFT

Parks & Open Space

DRAFT



Parks

City Limit
ETJ
County Boundaries



Source:
City of Fort Worth