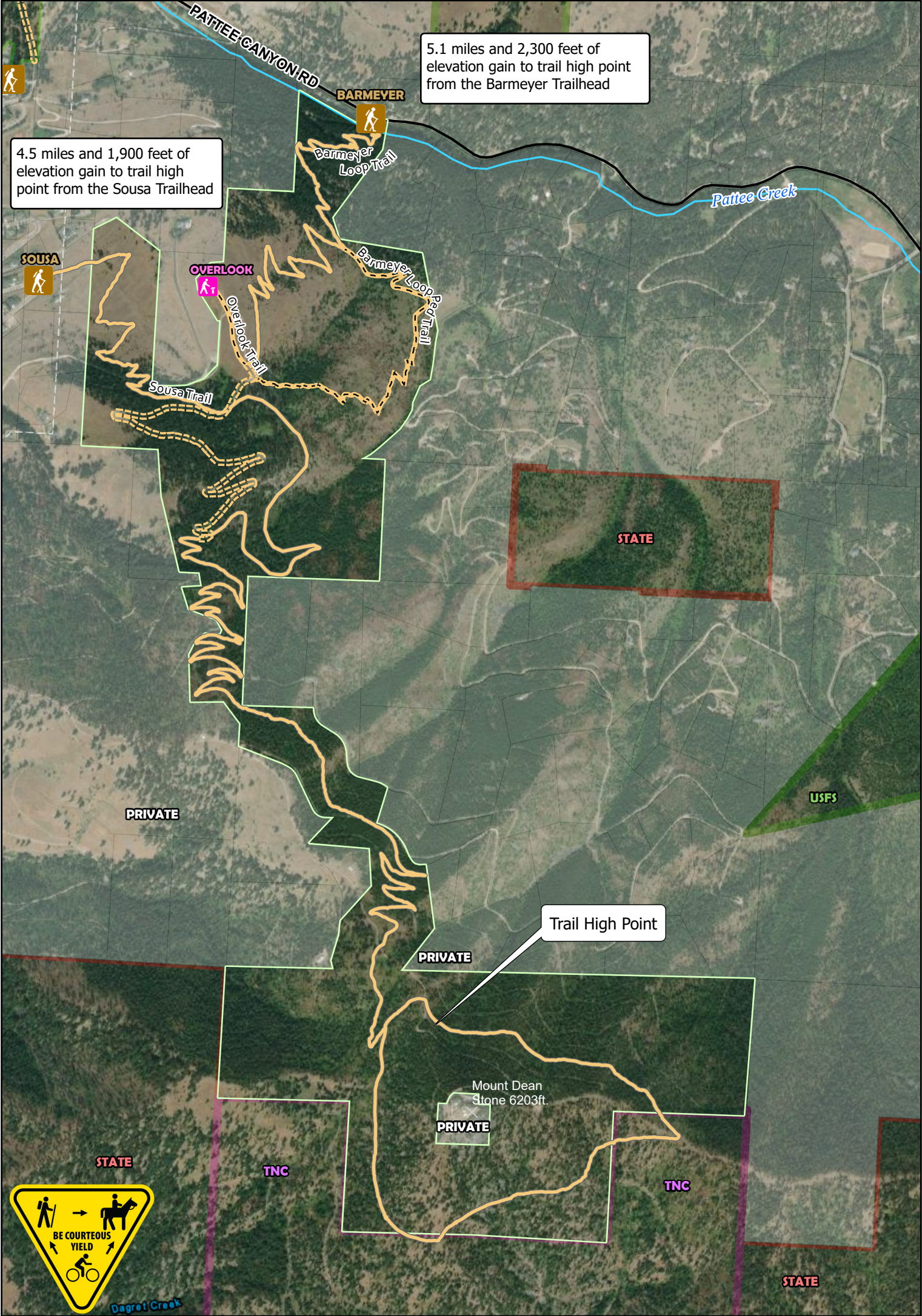


Mount Dean Stone Preserve Trails Map

This map depicts the existing trails and access points on the Mount Dean Stone Preserve. Trail locations and property lines are for reference only. Please stay on designated trails and respect other trail users.



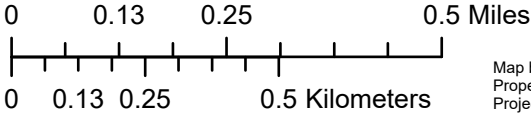
5.1 miles and 2,300 feet of elevation gain to trail high point from the Barmeyer Trailhead

4.5 miles and 1,900 feet of elevation gain to trail high point from the Sousa Trailhead

Trail High Point

Mount Dean Stone 6203ft.

- | | | |
|------------------------|------------------|-----------------------------------|
| State of Montana | City of Missoula | Non-motorized Doubletrack Trail |
| The Nature Conservancy | Private | Pedestrian Only Singletrack Trail |
| US Forest Service | Trailheads | Non-motorized Singletrack Trail |



Map by Clancy Jandreau, Missoula Parks and Recreation
Property boundaries are for reference only. This map does not constitute a legal representation of land ownership.
Projection: Lambert Conformal Conic, Coordinate System: NAD 1983 StatePlane Montana FIPS 2500 Feet

