

1.1

OUR PARKS, OUR PLACES

Nuestros Parques, Nuestros Lugares

우리 공원, 우리의 공간

የች መኖራሻ የች ቦታ

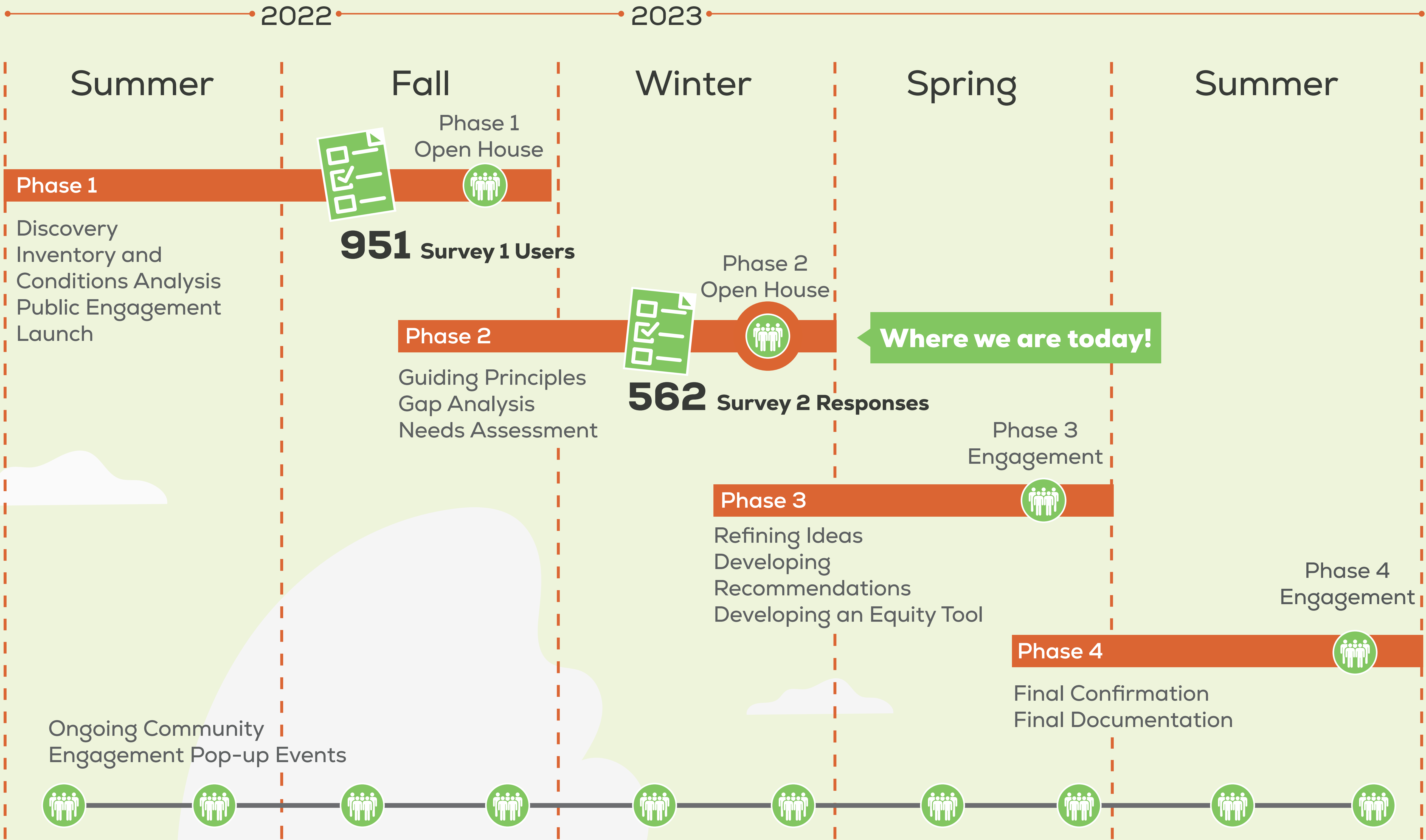
我们的公园,我们的场所

Công Viên Của Chúng Ta, Thắng Cảnh Của Chúng Ta

Community input is an essential part of the planning process for Our Parks, Our Places: A Plan for Aurora’s Parks, Recreation and Open Space! Today you will learn about the master plan process, existing system gaps and needs, survey feedback, and guiding principles for the Master Plan!

Here’s how you can help shape the future of Aurora’s Parks, Recreation, and Open Space (PROS):

PROJECT PROCESS



OPEN HOUSE GOALS

- 1

HAVE FUN learning about your Aurora Parks, Recreation and Open Space system!
- 2

Ask any questions along the way - we are here for you! Interpreters are available!
- 3

Tell us what you want to see in the future!





# 1.2 CREATING AN EQUITABLE SYSTEM IN AURORA

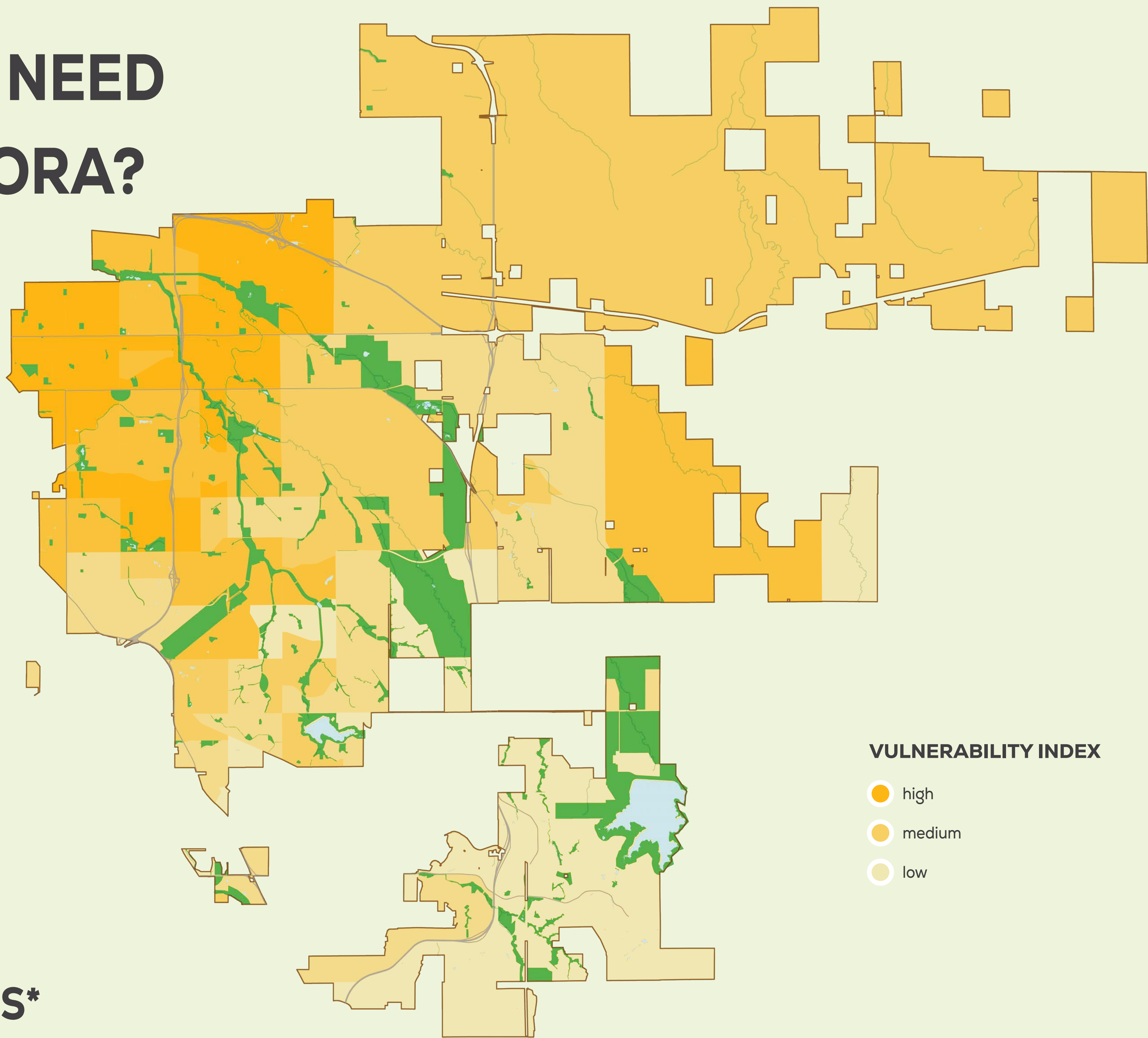
Creación de un sistema equitativo en Aurora • Aurora에서 형평성 있는 시스템 구축하기

创建一个属于大家的平等的公园系统 • Xây Dựng Một Hệ Thống Công Bằng tại Aurora • በአውሮራ ውስጥ ተገቢ የሆነ ስርዓት መፍጠር

## WHERE ARE THE HIGH NEED POPULATIONS IN AURORA?

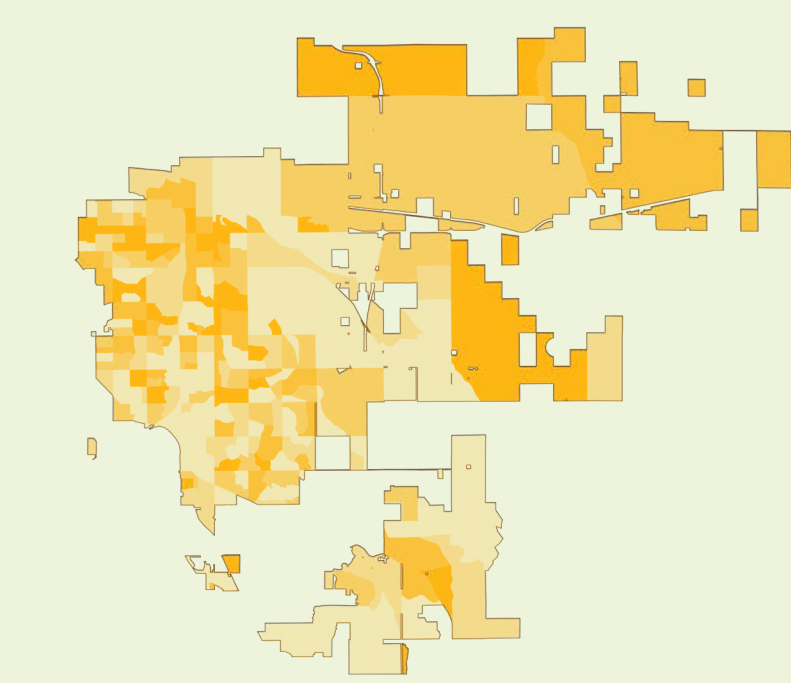
About 1/5<sup>th</sup> of Aurora’s census tracts rank “high” on the CDC’s Social Vulnerability Index\*

\*Social vulnerability is the degree to which a community is unable to prevent suffering and loss in the event of disruption or disaster.



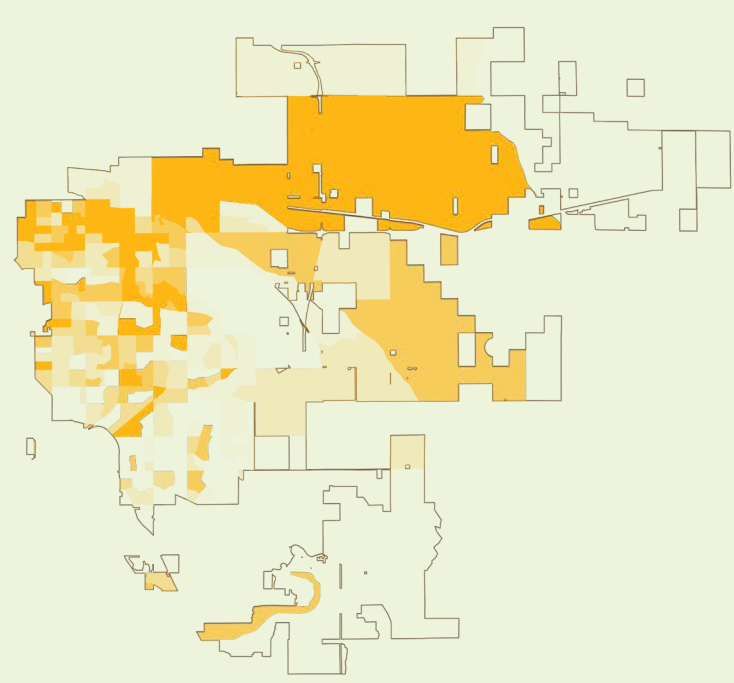
## SOCIAL VULNERABILITY FACTORS\*

\*These maps represent a selection of all datasets included in the full Social Vulnerability Index.



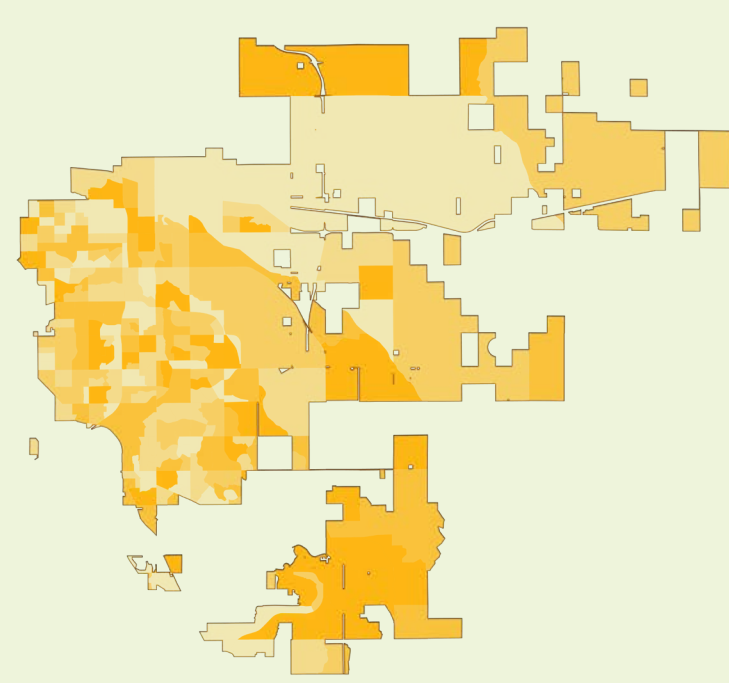
Poverty

(Darker = Higher Number of Households Below Poverty Level)



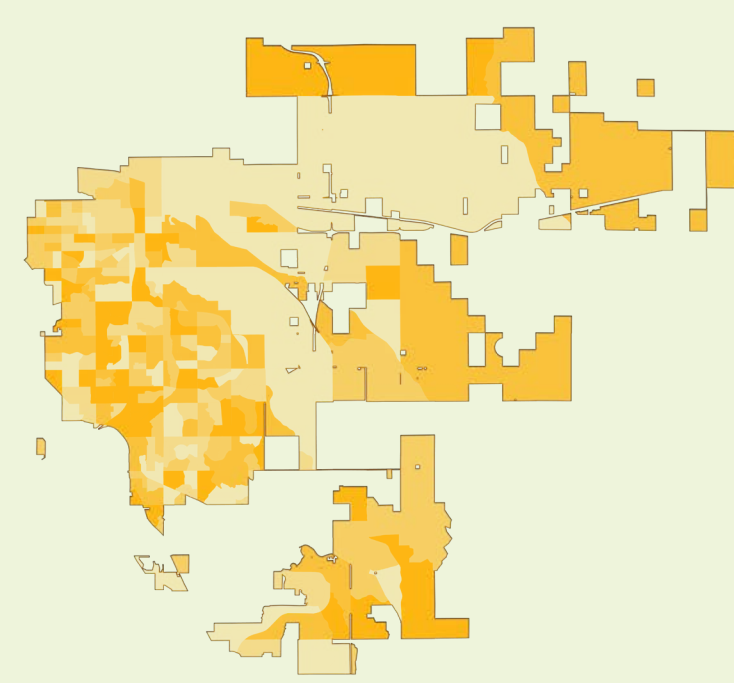
Housing Burden

(Darker = Higher Number of Disproportionately Burdened Households)



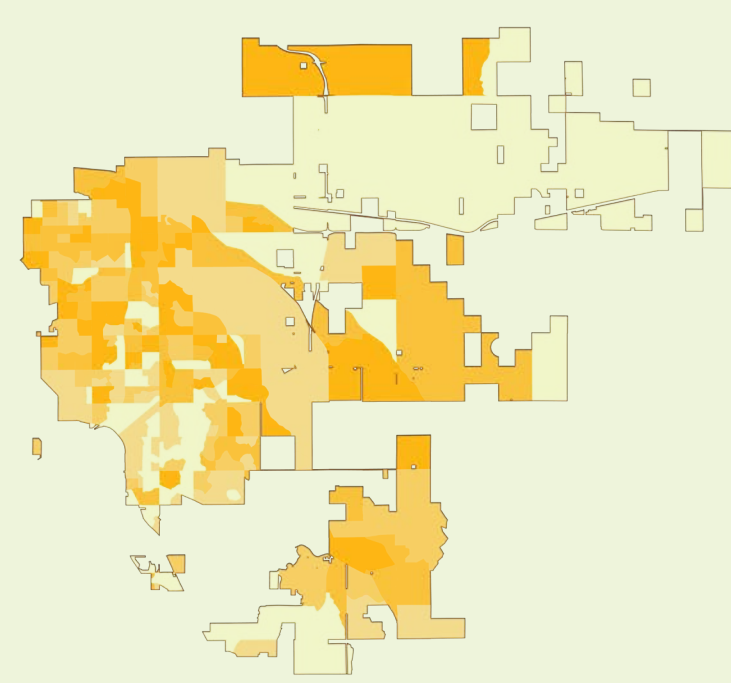
Youth + Older Adult Population

(Darker = Higher Number of People Aged 17 or Younger or 65 or Older)



Disability

(Darker = Higher Number of Households with One or More Persons with a Disability)



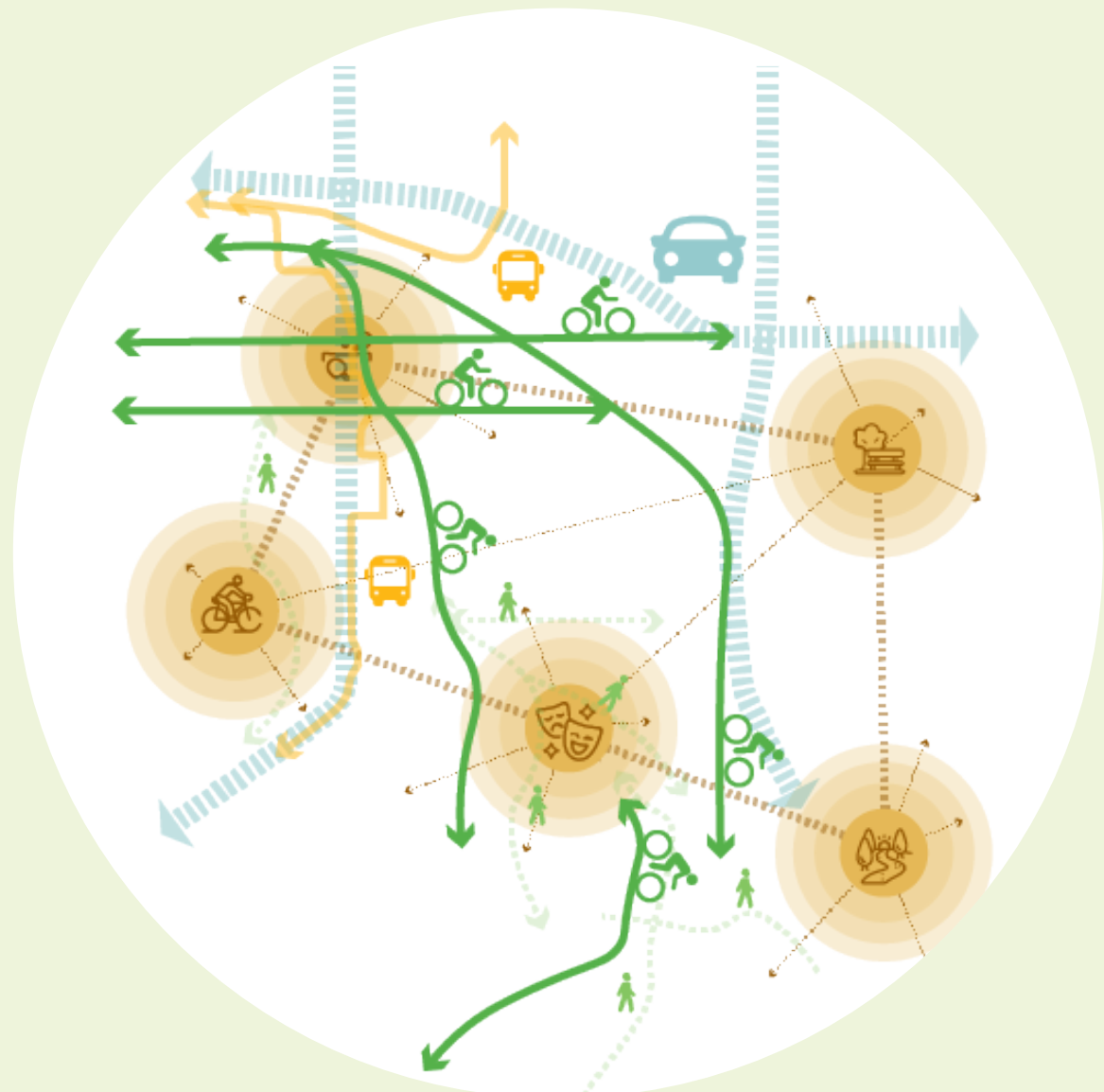
People of Color

(Darker = Higher Non-White Population)

## GUIDING PRINCIPLES

### Strengthen Connectivity to PROS Assets

Ensure equitable access and connectivity throughout the PROS system for all communities. Collaborate with organizations and public agencies representative of the many communities that make up Aurora.



### Meet Evolving Needs of the Community

Promote inclusive and diverse programming, recreation, and amenities. Enhance communication to foster healthy living, community building, and opportunities for all.



### Create Opportunities for Lifelong Education

Provide facilities and programs for all ages to promote life-long learning, health and discovery to help the community expand their knowledge of the PROS system and resources.



### Serve as Stewards to Our Environment

Preserve and enrich Aurora’s natural habitats and ecosystems through the design of sustainable landscapes and educational programs. Be transparent, accountable, and committed to responsible management.



### Provide Welcoming and Safe Spaces

Promote safety in PROS parks, recreation centers, and open space. Provide a diverse, welcoming, and safe experience for the community.



### Proactively Invest in the Present and Future

Invest in sustainable growth to continually improve the quality of the existing assets while creating new, welcoming destinations for all. Lead with efficient practices in operations and maintenance when planning for the present and future of PROS.



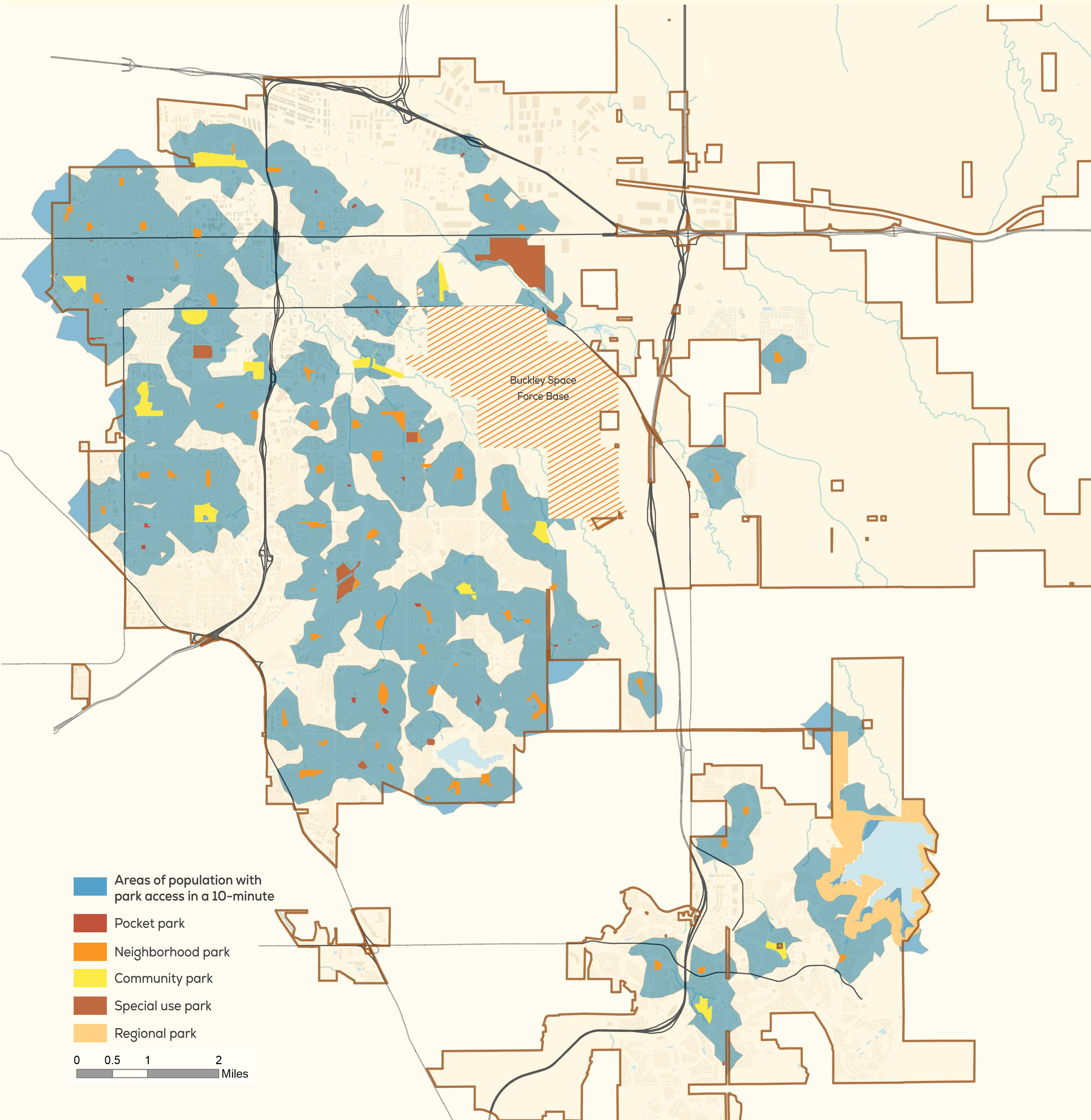


# 2.1 STRENGTHEN CONNECTIVITY TO PROS ASSETS

Reforzar la conectividad con los activos de PROS • 加强我们的公园, 开放空间, 和康乐中心的通达性

PROS 자산에 대한 연결성 강화 • Tăng Cường Kết Nối đến Các Tài Sản PROS • ከ PROS አሴቶች ጋር ያለዎትን ግንኙነት ያጠናክሩ

## PARK ACCESSIBILITY

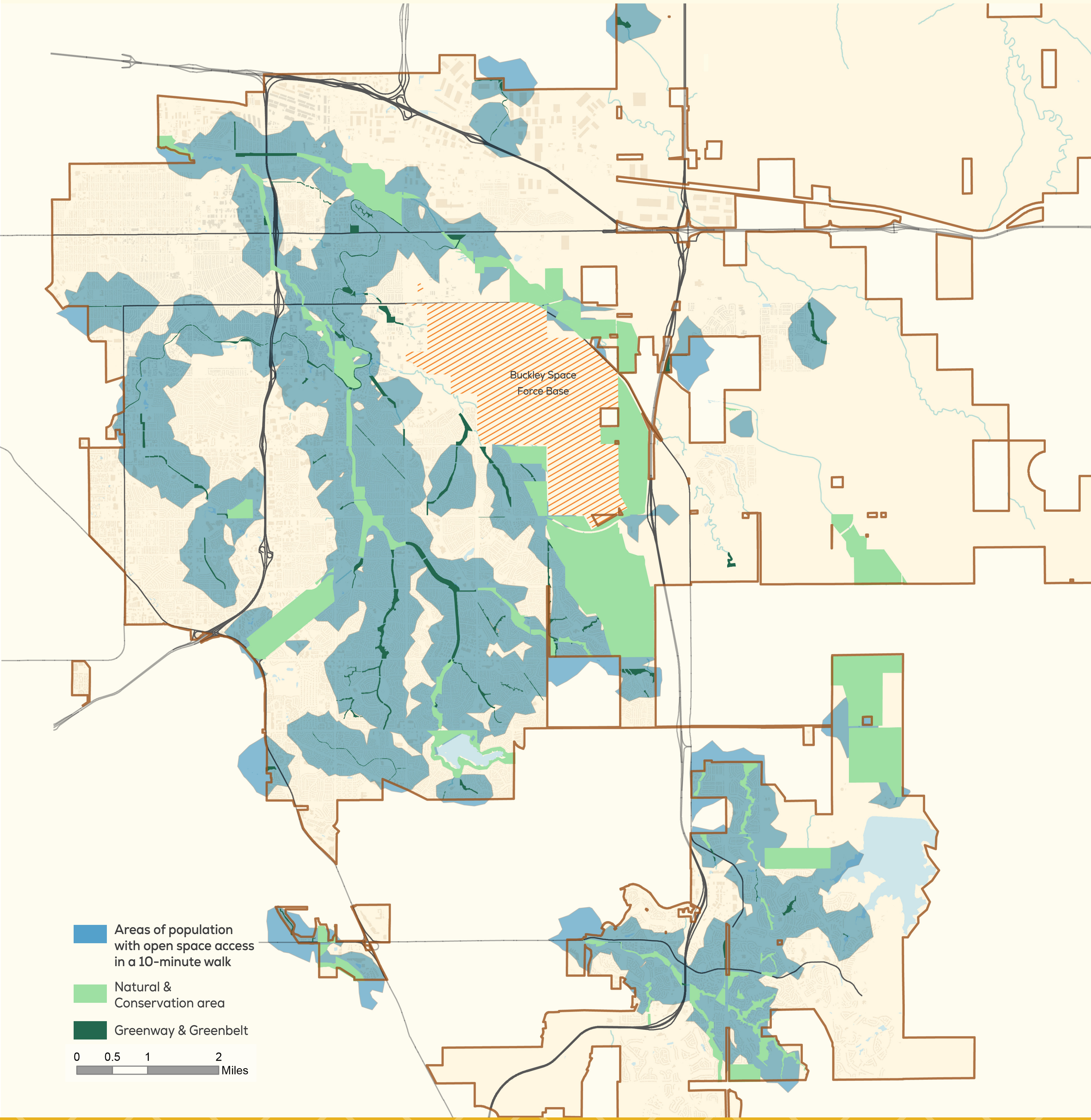


**56%** of Aurora residents live within 10-minute walking distance to **parks**

“Some parks are only, or mainly, accessible via the neighborhood surrounding or adjacent to it. Recommend better identified access” (Survey 2)

“I feel most of the parks are accessible except for people with the most severe disabilities.” (Survey 2)

## OPEN SPACE ACCESSIBILITY



### PARKS AND OPEN SPACE

**8%** of the high-density residential population do not live within a 10-minute walking distance to **parks and open spaces**

“Safer and more formal access to trails from neighborhoods, like the High Line Canal” (Survey 2)

“More connectivity between the multi-use paths, homes, businesses and schools” (Survey 2)

**50%** of Aurora residents live within 10-minute walking distance to **open spaces**

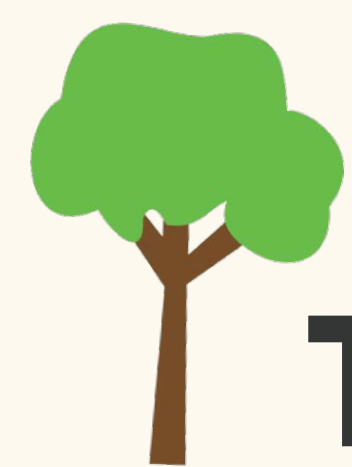
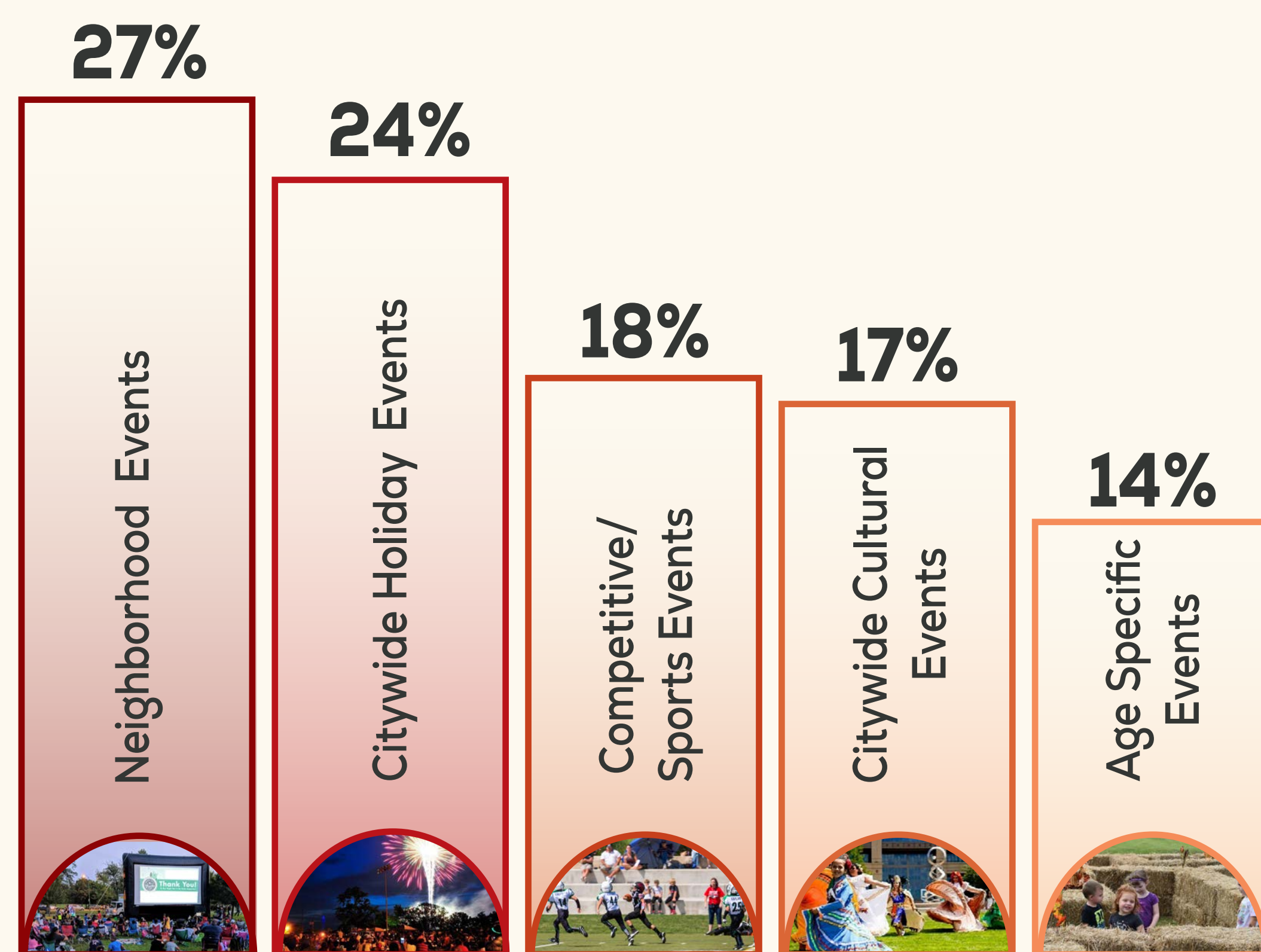


# 2.2 MEET EVOLVING NEEDS OF THE COMMUNITY

Satisfacer las necesidades cambiantes de la comunidad • 满足社区持续发展对公园及设施的需求

커뮤니티의 진화하는 요구 사항 충족 • Đáp Ứng Các Nhu Cầu Ngày Càng Tăng của Cộng Đồng • የማህበረሰቡ የሚሻሻሉ ፍላጎቶች ማሟላት

## Survey Q13: What is your favorite type of special event?



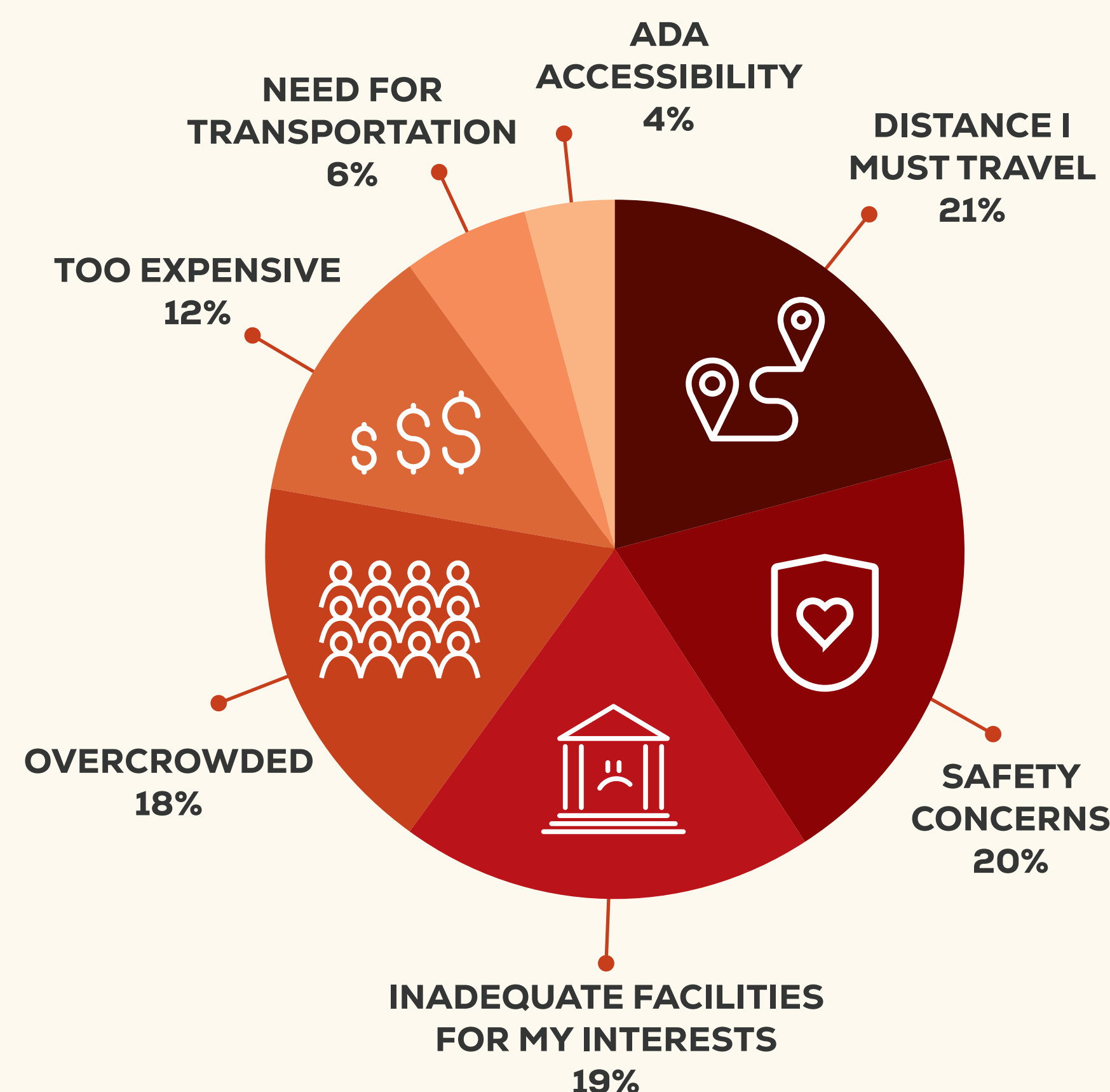
## Tell us how we could improve events and programs?

Offer variety events, for both day of week and time of day!

Program parks at night to promote safety!

More events offered across the city!

## Survey Q6: What are some barriers that prevent you from using the PROS system today?



## PUBLIC FEEDBACK

### What We've Heard

"Sports event scheduling should be mindful of religious attendance, needs on Sunday mornings especially"

"More cultural relevant public events!"

"Winter park spaces such as areas with rentable fire pits, or solar heaters. Lots of events happen at city center, having some winter spaces for rent here would be useful for people to rent/use to keep community gathering all year"

"Expanded programs to include all residents of the City. Improved and diverse communications regarding what is available"

"More volunteer opportunities to come together to clean parks, include people of all backgrounds"

"Youth outreach and increased diversity of activities and events"



# 2.3 CREATE OPPORTUNITIES FOR LIFELONG EDUCATION

Crear oportunidades de educación permanente • 提供不同年龄需求的教育机会  
평생교육 기회 창출 • Tạo Cơ Hội cho Giáo Dục Suốt Đời • የዕድሜ ልክ ትምህርት ዕድሎችን ይፍጠሩ

Survey Q7: What barriers keep you from participating in recreation programs sponsored by Aurora Parks, Recreation and Open Space?

## PUBLIC FEEDBACK

### What We've Heard

"I would love to see discounted life skills classes for teens like cooking"

"Expand classes. Language classes, basic sewing classes, gardening"

"Walking paths, outdoor yoga in various parks, more after school activities or early evening classes"

"Better, more interesting classes. Classes like Disaster Prep, Class about Drones, UFO Sightings etc. Interesting & fun things"

"Exercise classes.., Yoga, pilates, adult and kid tai kwondo or similar self defense classes"

"A wider variety of options and different times for activities."



135 mentions of needing more "time" options



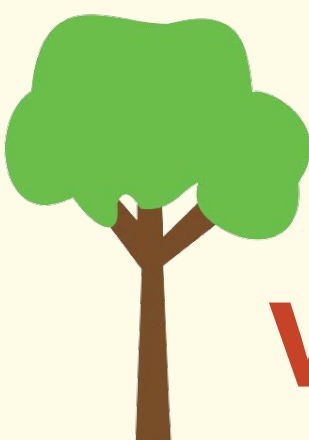
154 mentions of programs being too "expensive"



135 mentions that Aurora "(Does not) offer activities I'm interested in" and of a need for more programs/classes

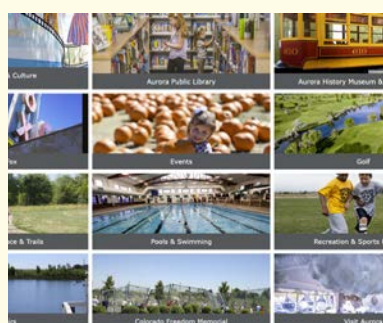


176 mentions of not "know(ing)" what programs and parks are available



## WHICH BARRIERS SHOULD PROS WORK TO ADDRESS FIRST?

Place three stickers next to your top three priorities



Don't know what programs are offered



Classes offered at inconvenient times



Do not offer activities I'm interested in



Safety and security are concerns



Poor equipment or facilities



Programs are too expensive



Need childcare



Need transportation

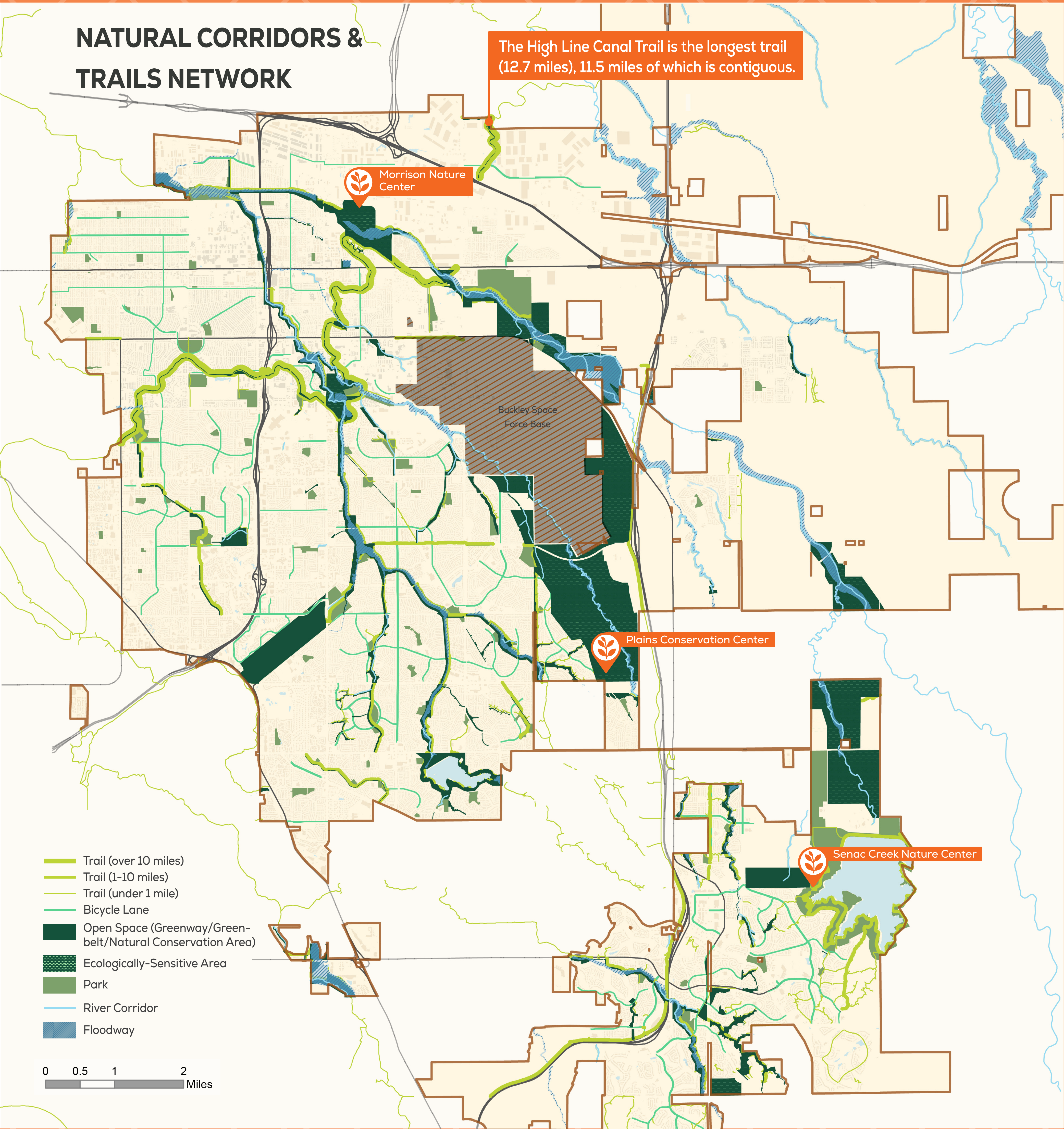


Programs do not meet my accessibility needs



# 2.4 SERVE AS STEWARDS TO OUR ENVIRONMENT

Servir de guardianes de nuestro medio ambiente • 致力于环境保育和可持续管理  
환경을 수호하는 자킴이 되기 • Quản Lý Tốt Môi Trường Của Chúng Ta • ለአካባቢያችን መጋቢዎች ሆነው ያገልግሉ



“We need nature-based reciprocal activities to give back to nature”

### PROGRAM TYPES OFFERED BY NATURE CENTERS

- Kid Naturalist Program
- Art Creation in Nature
- Natural Film Club
- Nature Camp
- Bird Walk

...And Many More!

“Just more open space! We have nesting bald eagles in many of our open spaces, and they are disturbed by commercial business”

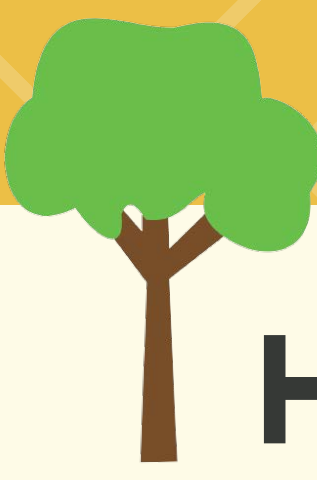
“More trails for hiking and cycling. Connect the Aurora residential trails to the E470 trails”

**More than 65 trails are less than 1 mile in length and disconnected from the larger system. This creates opportunities to connect across neighborhoods and nature.**



# 2.5 PROVIDE WELCOMING AND SAFE SPACES

Proporcionar espacios agradables y seguros • የጥሩ አቀባበል ያለው እና ደህንነቱ የተጠበቀ ቦታዎችን ያቅርቡ  
안전하고 다정한 공간 제공 • Mang Đến Các Không Gian Thân Thiện và An Toàn • 提供友好和安全舒适的公共场所



## HOW DO WE PRIORITIZE IMPROVEMENTS TO MAKE PROS SPACES MORE WELCOMING?

### PHYSICAL DESIGN



Universal design that support all physical abilities and ages



Diversity in form, color, and texture of landscape elements



Well-lit public space with adequate lighting

### PROGRAMMING & OPERATIONS



Park activation through all-day programming



Clear and legible signage in multiple languages

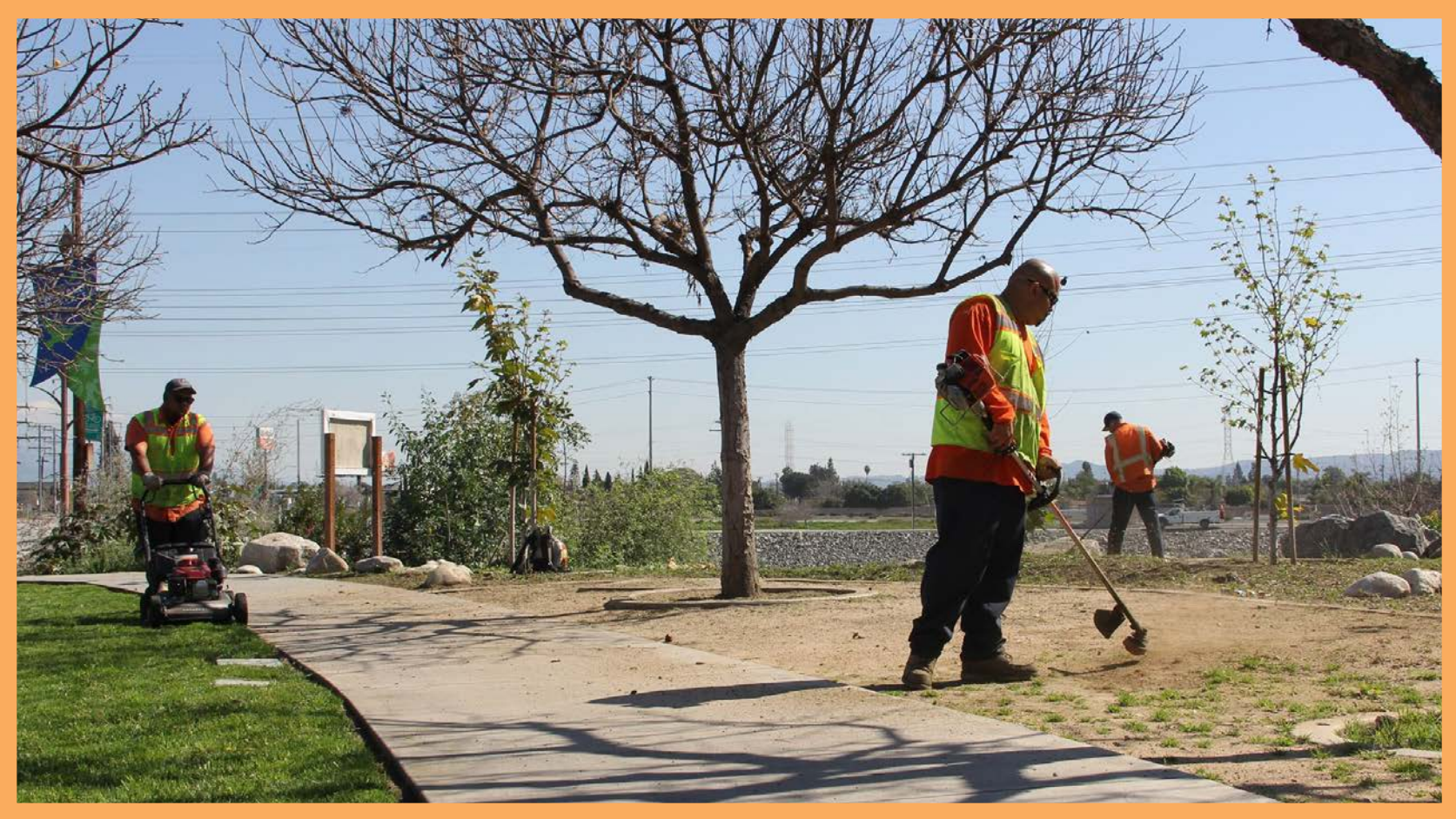


Offering diverse cultural programming

### MAINTENANCE



Well-maintained facilities



Lower response times for maintenance requests



More frequent restroom maintenance

### CITIZEN INVOLVEMENT



Enhance civic pride and ownership through involvement in park design



Enhance multilingual communication and marketing

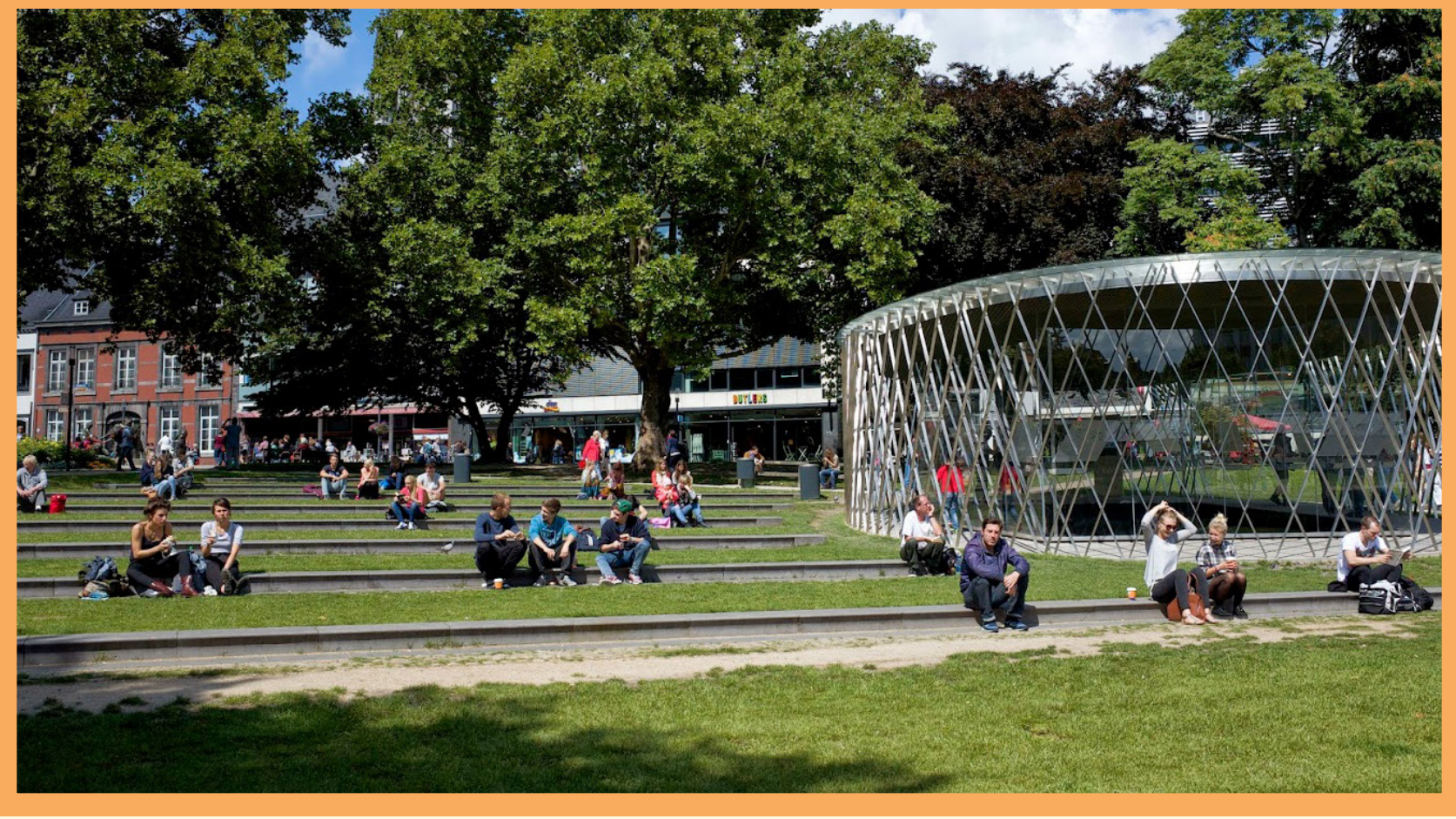


Create additional community volunteer opportunities

### FORMAL & INFORMAL SURVEILLANCE



Initiate more security measures



Increase visibility with clear sightlines



Support volunteer neighborhood watch groups

## OTHER IDEAS TO MAKE SPACES MORE WELCOMING?

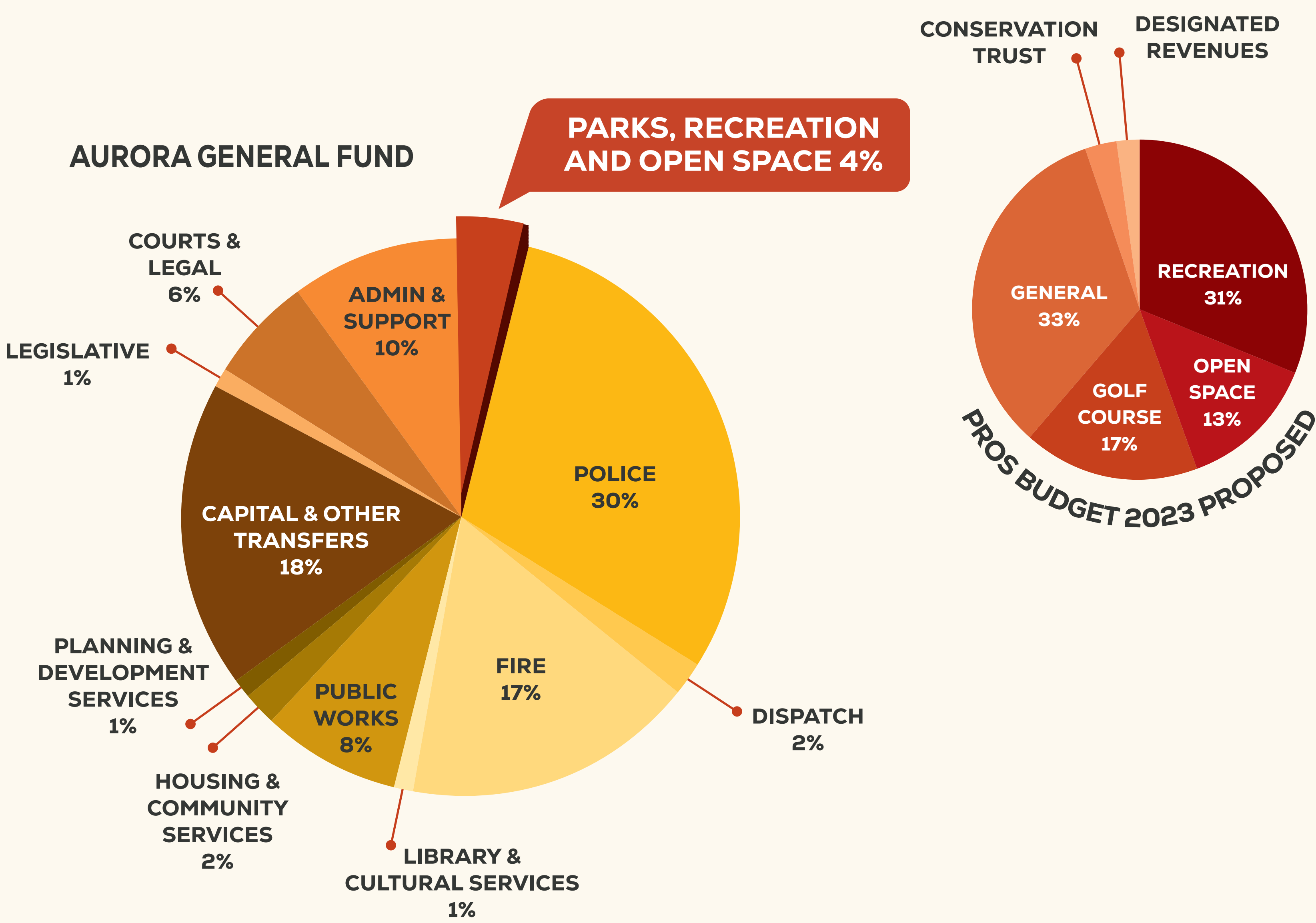


# 2.6 PROACTIVELY INVEST IN THE PRESENT AND FUTURE

Invertir proactivamente en el presente y el futuro • በአሁን እና በወደፊቱ ላይ በንቃት ኢንቨስት ያድርጉ  
현재와 미래에 적극적인 투자 • Chủ Động Đầu Tư vào Hiện Tại và Tương Lai • 积极改善现状和投资未来的公园系统

## How PROS is Funded Today

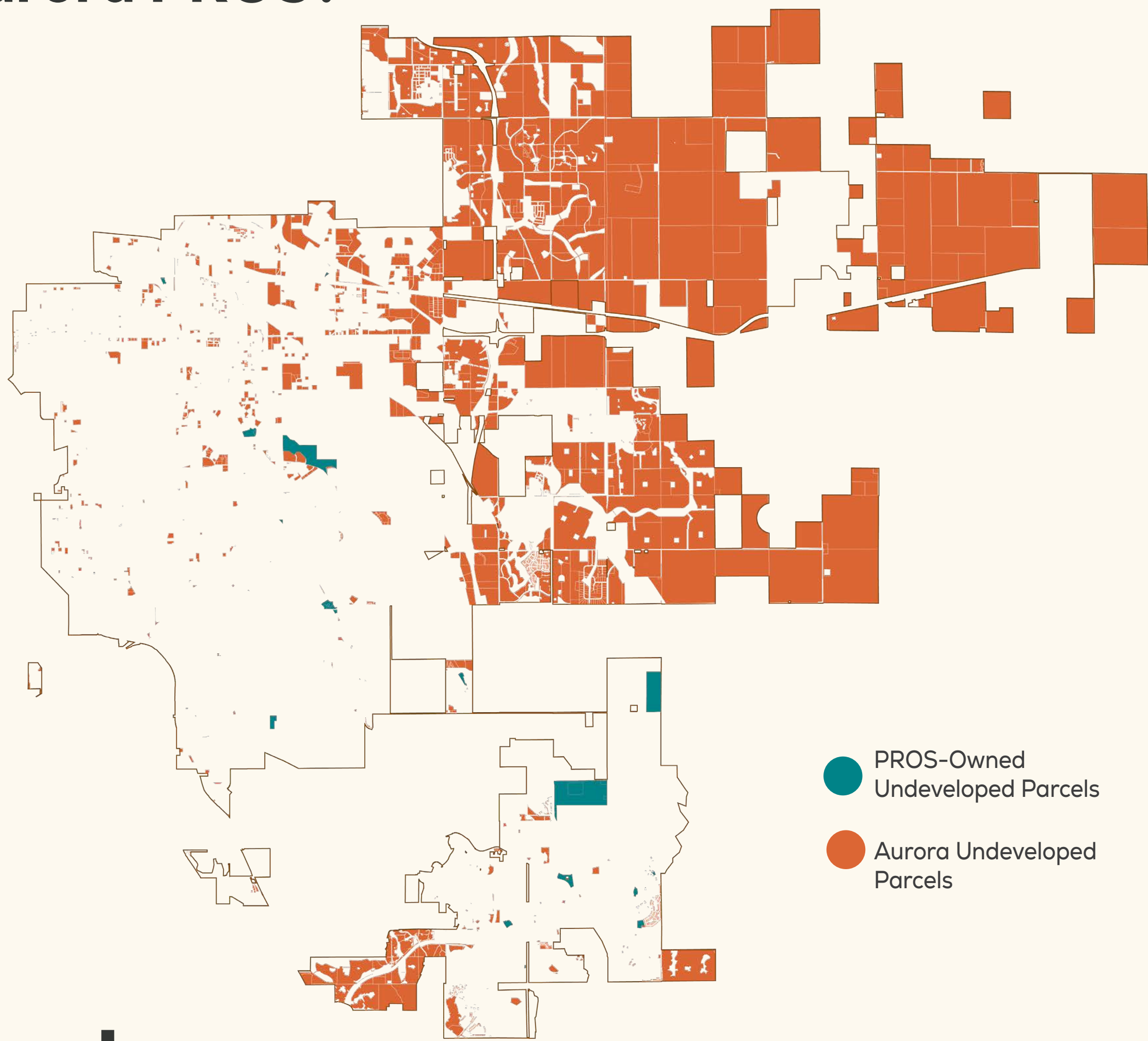
How does the yearly budget break down?



## Opportunities for Growth

What comes next for Aurora PROS?

32% of all land in Aurora is considered undeveloped



## What We've Heard

Feedback from your neighbors!

- Survey Q1: What are the most important park improvements needed in the Aurora PROS system?**
- Upgrade existing parks, recreation facilities, paths and open spaces
  - Acquire and protect land for natural open space
  - Expand and develop the regional trails system
  - Acquire more land for future parks
  - Develop a multi-purpose indoor recreation center

## HOW WOULD YOU INVEST IN THE FUTURE?

Vote for your top three using the stickers provided!

MOWED TURF AND IRRIGATION

RENOVATED TRAILS

MEDIAN LANDSCAPING

RENOVATED PLAYGROUNDS

TRASH AND GRAFFITI REMOVAL

RENOVATED COURTS & FIELDS

WEED MANAGEMENT

SNOW REMOVAL ALONG TRAILS

TREE CARE

OTHER IDEAS?



# WHERE WE'RE HEADED

Hacia dónde nos dirigimos • 우리의 지향점 • የት እንደደረስን

我们的目标 • Chúng Ta Đang Hướng Đến Đâu

## WHAT'S NEXT IN PHASE 3?

### 1

#### Draft Equity Tool Development

The tool will focus on park access and needs surrounding park amenities and facilities in inform future decision-making processes.

### 2

#### Draft Strategy Recommendations

We will refine the recommendations for addressing the gaps/needs identified by the community input. The recommendations will articulate Aurora's prioritization and address core objectives of the master plan.

### 3

#### Constant Community Engagement!

Keep an eye out for Aurora PROS out at community events asking for feedback on our planning process. Sign up at [EngageAurora.org/AuroraParks](https://EngageAurora.org/AuroraParks) to stay up to date.



We want to hear from you!  
Scan the QR Code  
and Stay Connected!

## NEXT STEPS FOR TONIGHT...



Follow up and get involved in the planning process through our events and website!



Please keep a flyer to take home and share with any friends or family or reference later!

What was your favorite thing you learned tonight about Aurora PROS?

¿Cuál fue su dato favorito que aprendió esta noche sobre Aurora PROS?

ዛሬ ማት ስለ Aurora PROS ከተማራችሁት ነገር ይበልጥ የወደዳችሁት የትኛው ነው?

오늘 Aururoa PROS를 통해 배운 것 중 가장 마음에 드는 것은 무엇인가요?

今晚介绍的关于奥罗拉 PROS 系统现状, 您最喜欢其中的哪些信息?

Trong buổi tối hôm nay, quý vị thích điều gì đã tìm hiểu được về Aurora PROS?