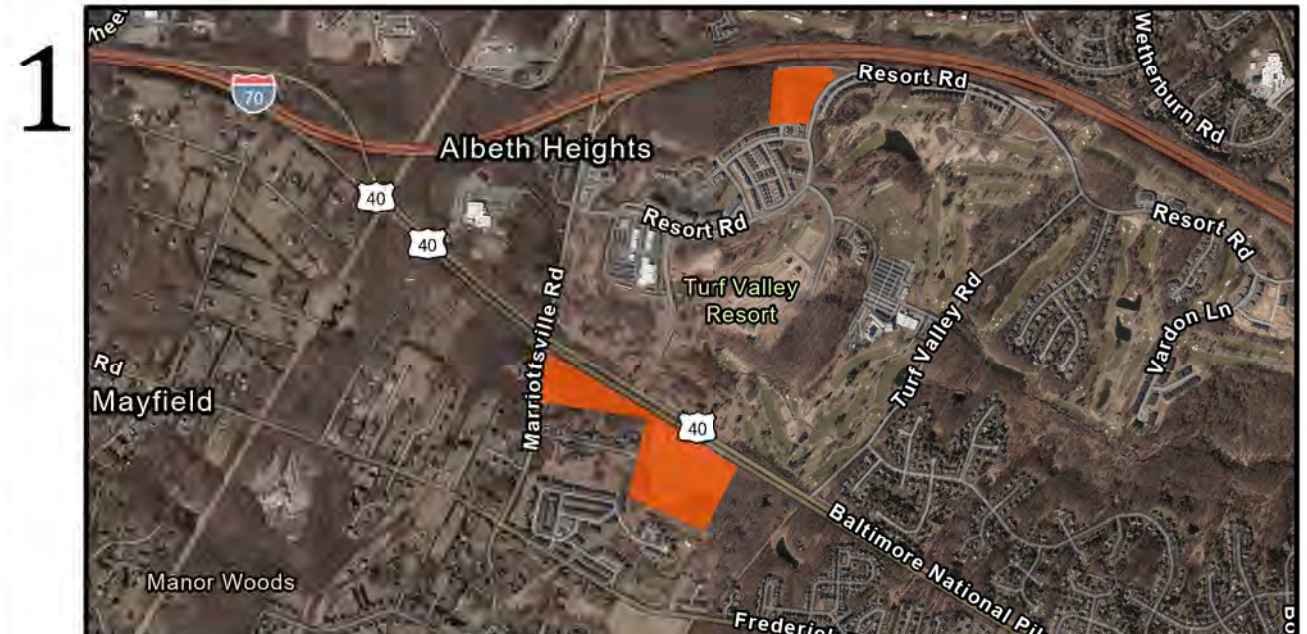
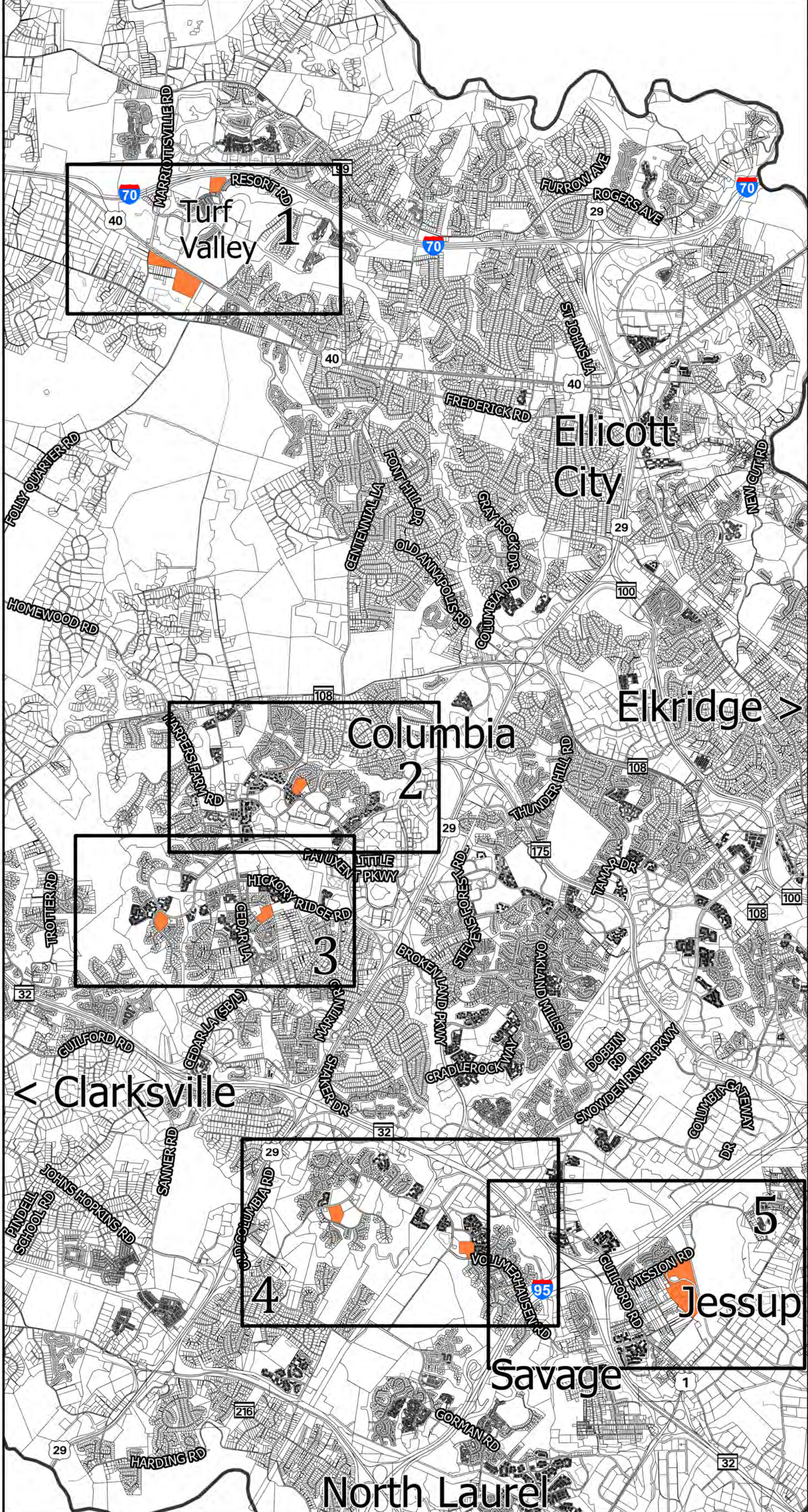


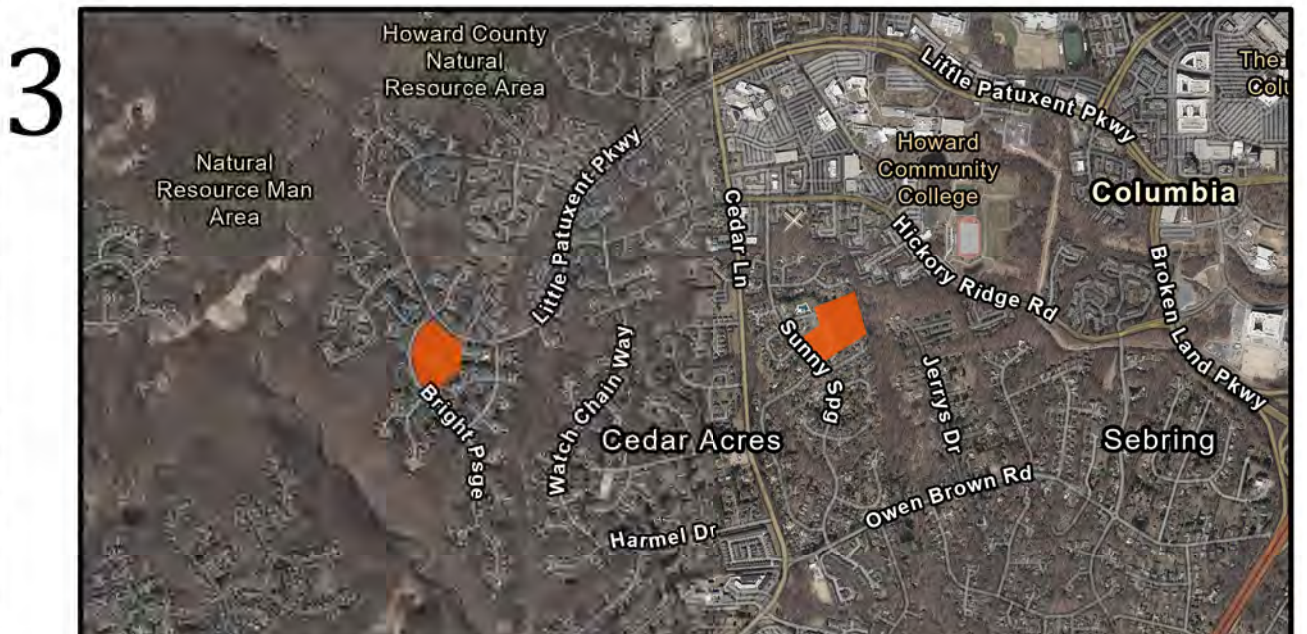
Howard County Public School System: Land Bank Overview



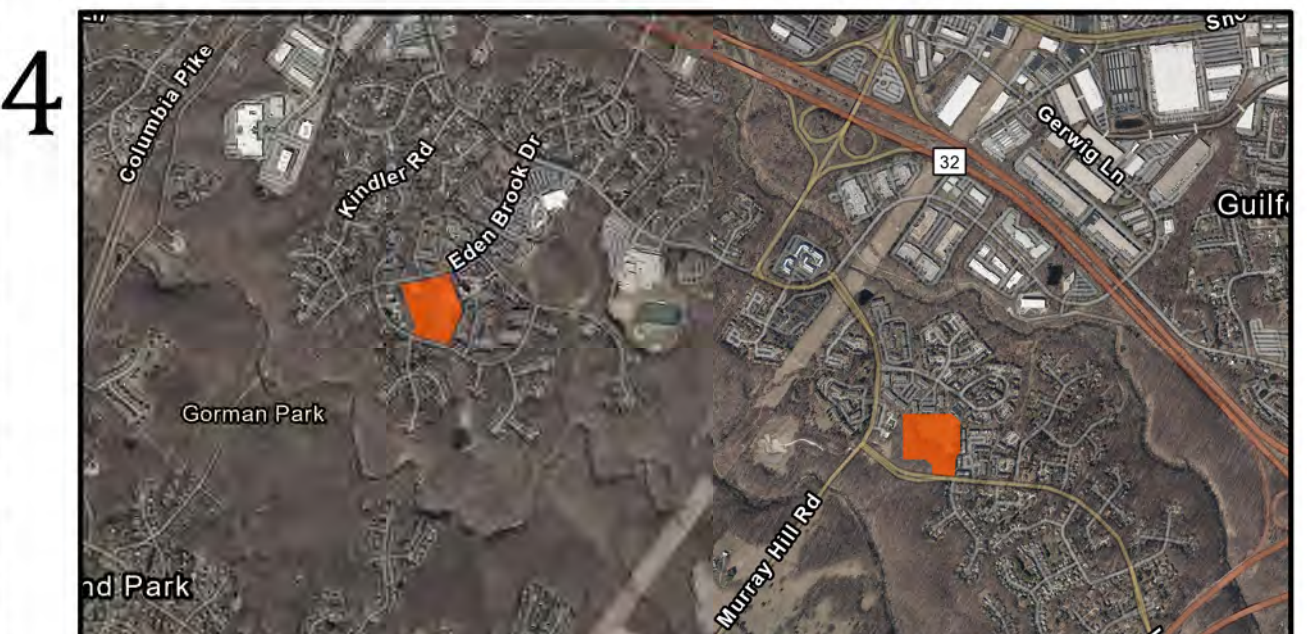
1- Marriottsville Rd. Middle School (South) and Pending Turf Valley Elementary School (North)



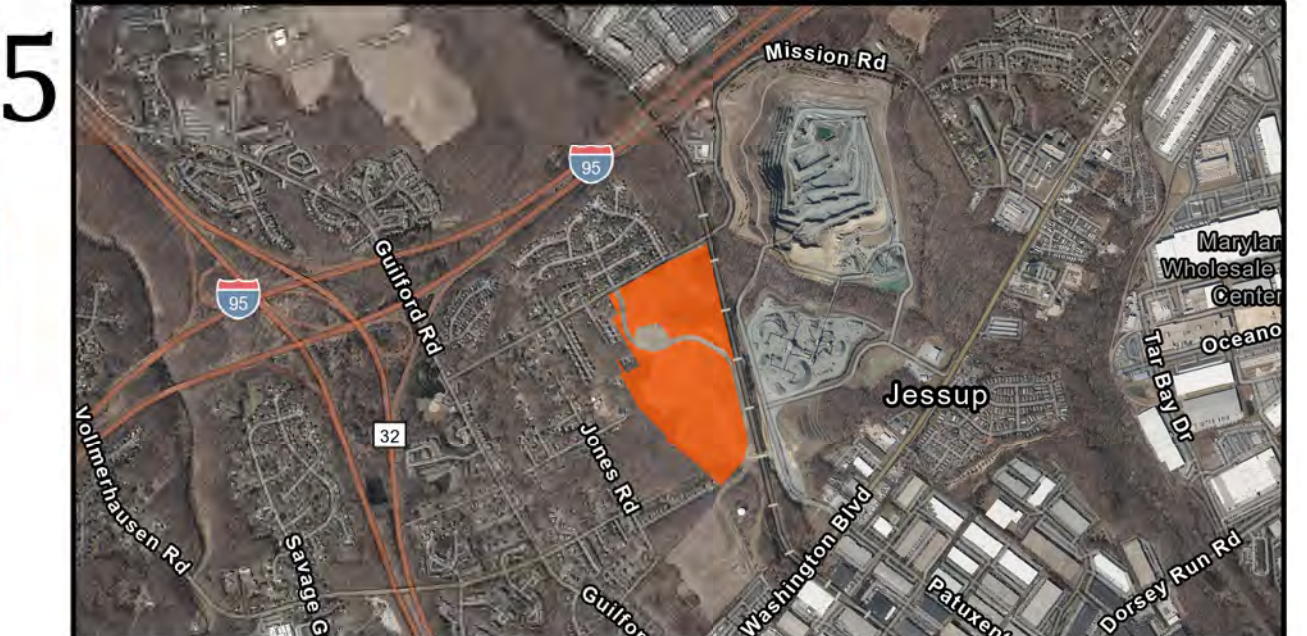
2-Former Faulkner Ridge Elementary School Site (North Columbia)



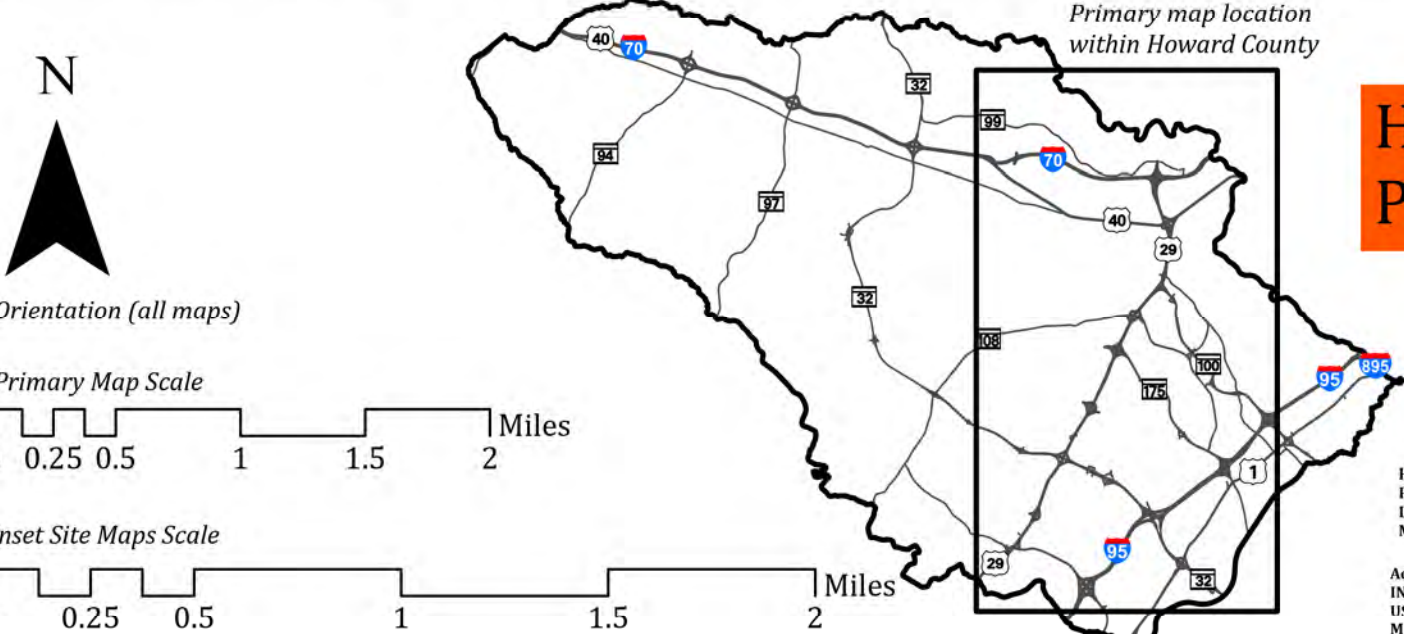
3- Clay's Forest (West) & Hawthorne Park (East) Elementary Schools (West Columbia)



4- Dickinson Park (West) & Huntington Park (East) Elementary Schools (South Columbia)



5- Mission Rd. New High School # 13 & Potential Elementary School (Jessup)



HCPSS Land Bank Properties

Howard County, Maryland
Public School System
Dept. of Planning & Zoning
May 2021

Aerial Labeling: VITA, Esri, HERE, Garmin, SafeGraph,
INCREMENT P, METI/NASA, USGS, EPA, NPS, US Census Bureau,
ISDA, County of Anne Arundel, Baltimore County Government,
MNCPFC