

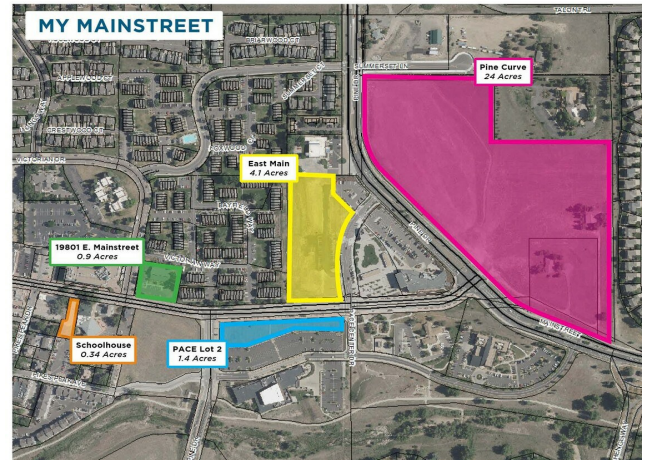
PINE CURVE

\$5,793,331



Watermain available in Summerset Lane; Sanitary sewer connections available is northeast and southwest property corners; Gas provided by Xcel Energy; Comcast and CenturyLink located within the area.

Property currently owned by the Town of Parker for a mixed use development.



Price:	\$5,793,331
Property Type:	Land
Property Subtype:	Commercial
Proposed Use:	Mixed Use
Sale Type:	Investment
Total Lot Size:	24.00 AC
No. Lots:	1
Zoning Description:	District- Historic Center



Weldy Fezell

Redevelopment Manager
20120 E Mainstreet
Parker, CO 80138
303.805.3168
weldy@p3parker.com

For more information visit:
www.p3parker.com/pine-curve