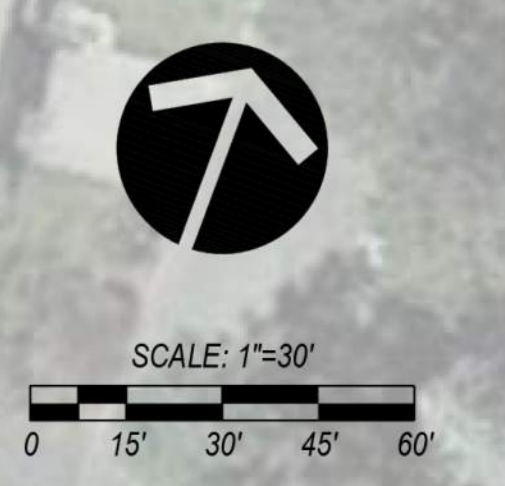


Option A

Reed Park - Ellensburg, Washington

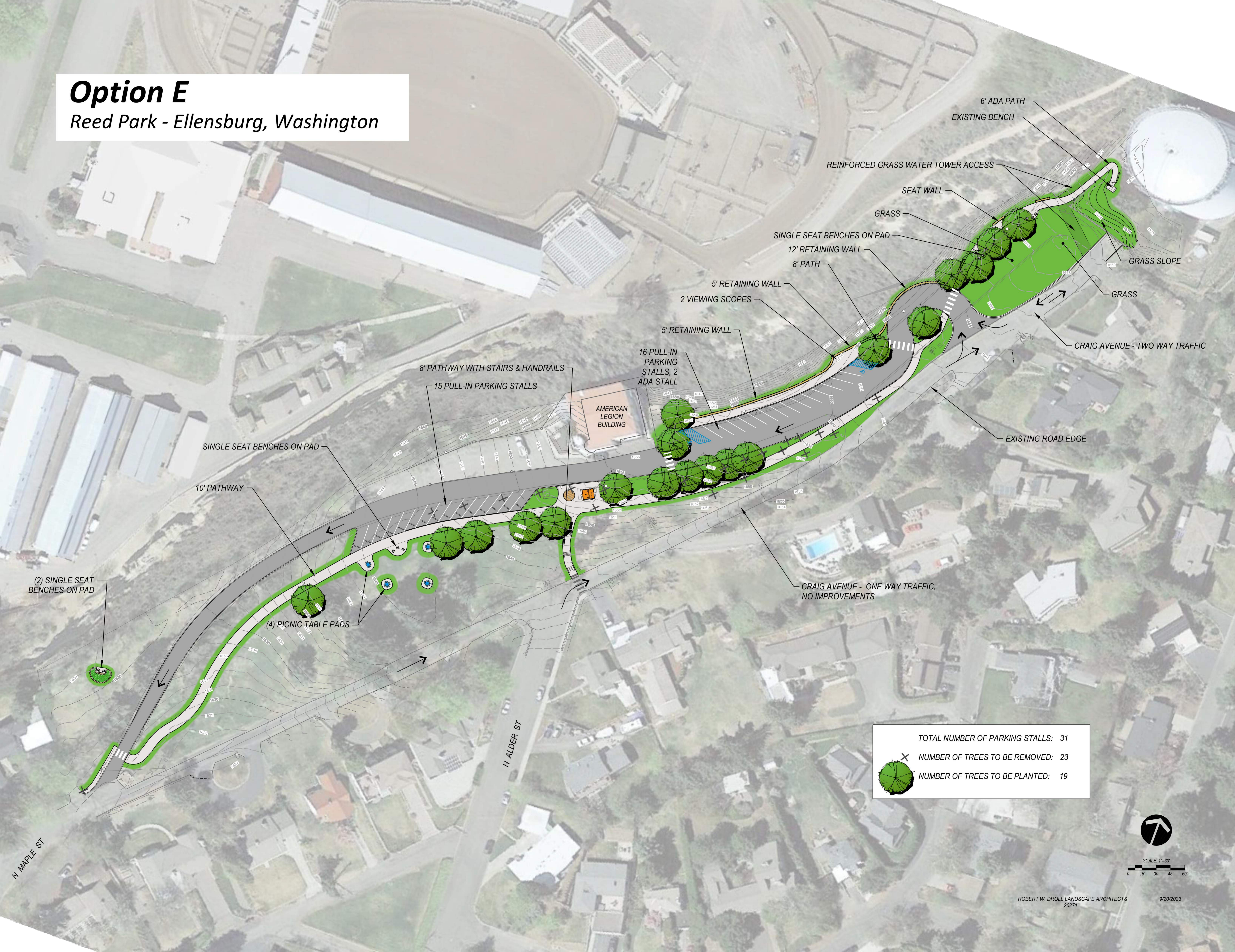


TOTAL NUMBER OF PARKING STALLS:	33
X NUMBER OF TREES TO BE REMOVED:	15
● NUMBER OF TREES TO BE PLANTED:	15



Option E

Reed Park - Ellensburg, Washington

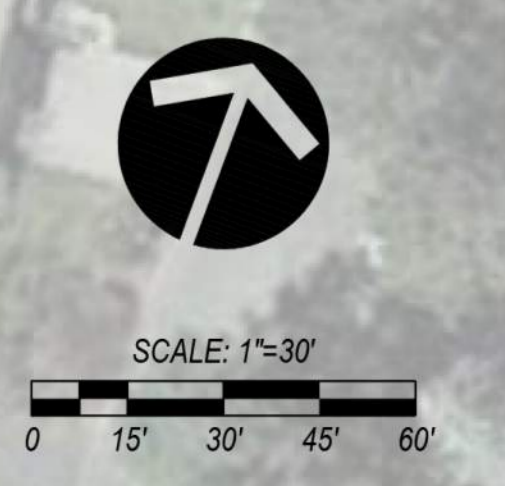


6' ADA PATH
 EXISTING BENCH
 REINFORCED GRASS WATER TOWER ACCESS
 SEAT WALL
 GRASS
 SINGLE SEAT BENCHES ON PAD
 12' RETAINING WALL
 8' PATH
 5' RETAINING WALL
 2 VIEWING SCOPES
 5' RETAINING WALL
 16 PULL-IN PARKING STALLS, 2 ADA STALL
 8' PATHWAY WITH STAIRS & HANDRAILS
 15 PULL-IN PARKING STALLS
 AMERICAN LEGION BUILDING
 CRAIG AVENUE - TWO WAY TRAFFIC
 EXISTING ROAD EDGE

SINGLE SEAT BENCHES ON PAD
 10' PATHWAY
 (2) SINGLE SEAT BENCHES ON PAD
 (4) PICNIC TABLE PADS

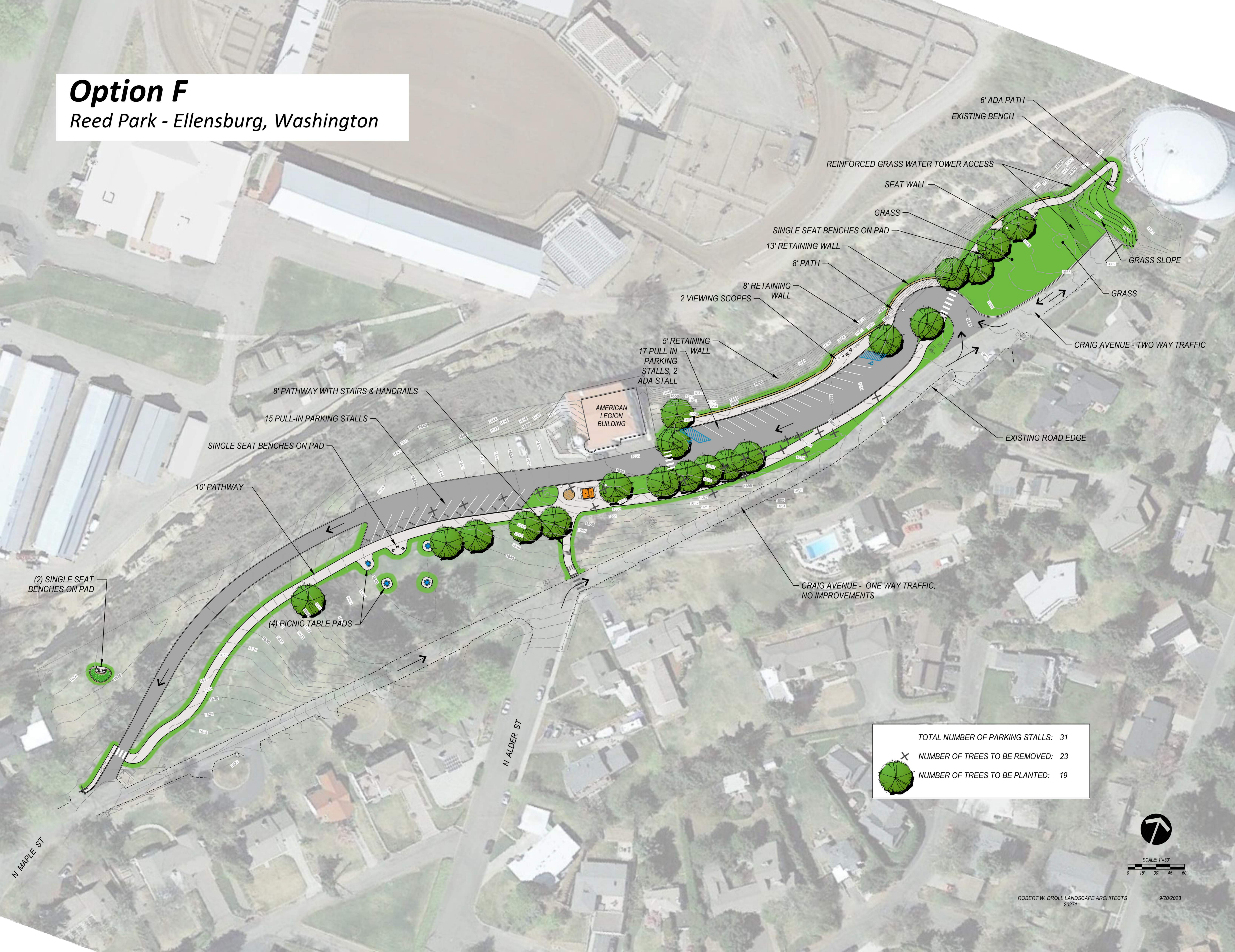
CRAIG AVENUE - ONE WAY TRAFFIC, NO IMPROVEMENTS

TOTAL NUMBER OF PARKING STALLS:	31
NUMBER OF TREES TO BE REMOVED:	23
NUMBER OF TREES TO BE PLANTED:	19



Option F

Reed Park - Ellensburg, Washington



6' ADA PATH

EXISTING BENCH

REINFORCED GRASS WATER TOWER ACCESS

SEAT WALL

GRASS

SINGLE SEAT BENCHES ON PAD

13' RETAINING WALL

8' PATH

8' RETAINING WALL

2 VIEWING SCOPES

5' RETAINING WALL

17 PULL-IN PARKING STALLS, 2 ADA STALL

AMERICAN LEGION BUILDING

8' PATHWAY WITH STAIRS & HANDRAILS

15 PULL-IN PARKING STALLS

SINGLE SEAT BENCHES ON PAD

10' PATHWAY

(2) SINGLE SEAT BENCHES ON PAD

(4) PICNIC TABLE PADS

CRAIG AVENUE - TWO WAY TRAFFIC

EXISTING ROAD EDGE

CRAIG AVENUE - ONE WAY TRAFFIC, NO IMPROVEMENTS

N ALDER ST

N MAPLE ST

TOTAL NUMBER OF PARKING STALLS:	31
NUMBER OF TREES TO BE REMOVED:	23
NUMBER OF TREES TO BE PLANTED:	19



SCALE: 1"=30'
0 15 30 45 60'