

# ENGAGEMENT

In 2025, the City engaged on redesigning Lions Park playground with

- Two in-person pop-ups in Lions Park
- Survey opportunities via Guiding Golden
- Two presentations to the Parks and Recreation Advisory Board (PRAB)
- Three community meetings held in conjunction with the Heart of Golden East Zone Amenities project

# WHAT WE HEARD

- Water feature
- Preservation of existing mature trees
- Preservation of flat turf space
- Increased seating and shade
- Nature play design and aesthetic
- Natural color scheme
- Wood, logs and other natural materials
- Multiple slides, sensory play elements, designated climbing area, swings
- Irrigation and drainage improvements throughout the park
- Accessibility considerations
- Equal support for playground location remaining in same spot or relocating to a more central location within the park

# ALL PLAYGROUND REPLACEMENT CONCEPTS

In all three proposed concepts, preservation of open lawn space and existing trees has been prioritized. Each concept will also feature:

- Irrigation upgrades throughout the park
- Portable restrooms
- Bike racks
- Maintain east pavilion and stone picnic tables along 10th Street
- Minor drainage improvements
- Increased seating options
- Increased shaded space
- Removal of sand volleyball court



# CONCEPT ONE

Concept 1 features the new playground location shifted slightly with additional planting along the street to amplify safety, larger play areas with nature aesthetic playground materials on a similar footprint to existing playground, no water feature, a new pavilion, accessible path from 10th St. to GCC and 10th St. to play area, an outdoor classroom located on the hillside with garden, and new plantings at play areas.

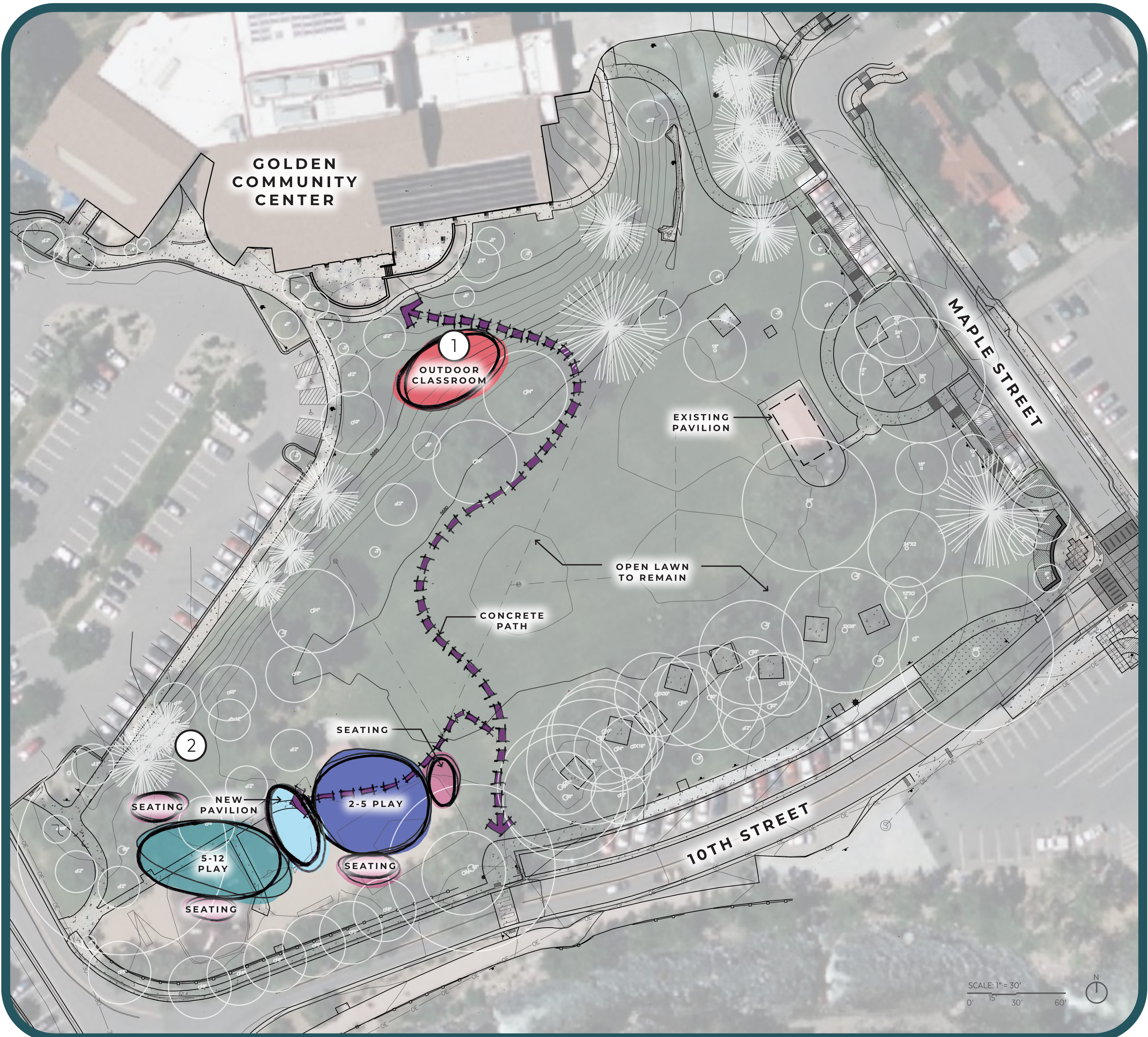
## 1 OUTDOOR CLASSROOM

Terraced gathering area to support park and community center programming and provide space for informal gathering.



## 2 PLAYGROUNDS

Nature-themed traditional-style play equipment will include age-appropriate and inclusive swings, climbers, and slides. Equipment is designed to encourage active, imaginative play, build motor skills, and foster creativity.



# CONCEPT TWO

Concept 2 features the new playground located in the same place as the existing structure reducing costs for landscape restoration, traditional playground materials and aesthetic, a circulating water feature with hand pump activation, accessible path from 10th St. to the play area, no outdoor classroom, and maintaining existing vegetation - planting is limited to turf restoration.

## 1 WATER FEATURE

Play stream bed with potable water activated by hand pump.



## 2 PLAYGROUNDS

New play equipment will include age-appropriate and inclusive swings, climbers, and structures with slides. Equipment will be selected to encourage active play, build motor skills, and foster creativity and imaginative play. Playground materials and aesthetic will be "traditional" similar to existing.



SCALE: 1" = 30'  
0' 15' 30' 60'

# CONCEPT THREE

Concept 3 features larger play areas at the hillside using exiting topography to create slides and climbers featuring nature play design and materials, no water feature, one new pavilion, accessible paths from 10th St. to GCC and 10th St. to play area and a gravel path at native gardens, an outdoor classroom with native garden with areas for gathering and environmental education, and new plantings at play areas.

## ② PLAYGROUNDS

Terraced nature play areas at the hillside. Hill slides and climbers will connect the terraces. Nature-themed play equipment will include age-appropriate and inclusive swings and freestanding equipment. Playground materials will be more natural, in line with nature play design.

## ① NATIVE GARDEN

Landscaped area for outdoor classroom or informal gatherings, and environmental education with native plantings to support ecological health and habitat.

